

Anti-CPT2 antibody [1C2AE6] ab110293

[1 Abreviews](#) [5 References](#) [4 图像](#)

概述

产品名称	Anti-CPT2抗体[1C2AE6]
描述	小鼠单克隆抗体[1C2AE6] to CPT2
宿主	Mouse
经测试应用	适用于: IHC-P, ICC/IF, Flow Cyt, IP 不适用于: WB
种属反应性	与反应: Mouse, Rat, Cow, Human
免疫原	Synthetic peptide. This information is considered to be commercially sensitive.
阳性对照	HepG2 cells. HL-60 cells. Human normal colon FFPE tissue
常规说明	<p>This antibody clone is manufactured by Abcam. If you require a custom buffer formulation or conjugation for your experiments, please contact orders@abcam.com.</p> <p>The Life Science industry has been in the grips of a reproducibility crisis for a number of years. Abcam is leading the way in addressing this with our range of recombinant monoclonal antibodies and knockout edited cell lines for gold-standard validation. Please check that this product meets your needs before purchasing.</p> <p>If you have any questions, special requirements or concerns, please send us an inquiry and/or contact our Support team ahead of purchase. Recommended alternatives for this product can be found below, along with publications, customer reviews and Q&As</p> <p>Product was previously marketed under the MitoSciences sub-brand.</p>

性能

形式	Liquid
存放说明	Shipped at 4°C. Store at +4°C. Do Not Freeze.
存储溶液	pH: 7.5 Preservative: 0.02% Sodium azide Constituent: HEPES buffered saline
纯度	Ammonium Sulphate Precipitation
纯化说明	Purity near homogeneity as judge by SDS-PAGE. The antibody was produced in-vitro using hybridomas grown in serum-free medium and then purified by biochemical fractionation.
克隆	单克隆

克隆编号	1C2AE6
同种型	IgG1
轻链类型	kappa

应用

The Abpromise guarantee **Abpromise™**承诺保证使用ab110293于以下的经测试应用

“应用说明”部分 下显示的仅为推荐的起始稀释度;实际最佳的稀释度/浓度应由使用者检定。

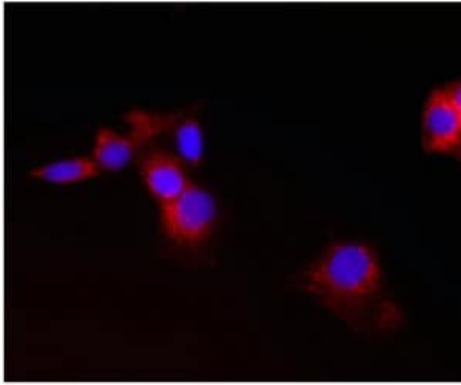
应用	Ab评论	说明
IHC-P		Use a concentration of 10 µg/ml.
ICC/IF		Use a concentration of 4 µg/ml.
Flow Cyt		Use a concentration of 1 µg/ml. ab170190 - Mouse monoclonal IgG1, is suitable for use as an isotype control with this antibody.
IP		Use at an assay dependent concentration.

应用说明 Is unsuitable for WB.

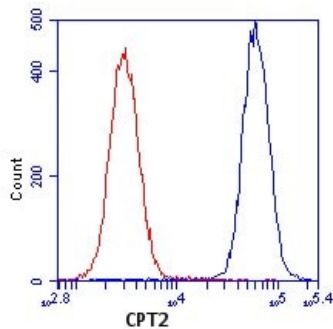
靶标

通路	Lipid metabolism; fatty acid beta-oxidation.
疾病相关	<p>Defects in CPT2 are the cause of carnitine palmitoyltransferase 2 deficiency (CPT2D) [MIM:255110, 600649]; also known as CPT-II deficiency or CPT2 deficiency. CPT2D is an autosomal recessive disorder characterized by recurrent myoglobinuria, episodes of muscle pain, stiffness, and rhabdomyolysis. These symptoms are triggered by prolonged exercise, fasting or viral infection and patients are usually young adults. In addition to this classical, late-onset, muscular type, a hepatic or hepatocardiomyopathy form has been reported in infants. Clinical pictures in these children or neonates include hypoketotic hypoglycemia, liver dysfunction, cardiomyopathy and sudden death.</p> <p>Defects in CPT2 are the cause of carnitine palmitoyltransferase 2 deficiency, lethal neonatal (CPT2D-LN) [MIM:608836]; also known as lethal neonatal CPT-II deficiency. It is a lethal neonatal form of CPT2D. This rarely presentation is antenatal with cerebral periventricular cysts and cystic dysplastic kidneys. The clinical variability of the disease is likely attributed to the variable residual enzymatic activity.</p>
序列相似性	Belongs to the carnitine/choline acetyltransferase family.
细胞定位	Mitochondrion inner membrane.

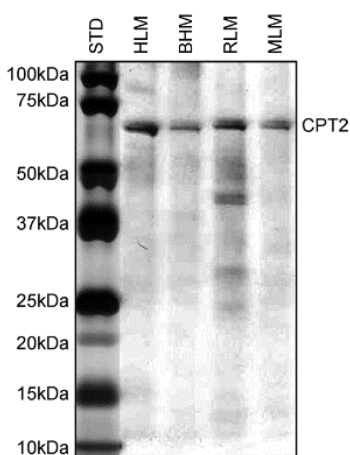
图片



Immunocytochemistry/ Immunofluorescence - Anti-CPT2 antibody [1C2AE6] (ab110293)



Flow Cytometry - Anti-CPT2 antibody [1C2AE6] (ab110293)



Immunoprecipitation - Anti-CPT2 antibody [1C2AE6] (ab110293)

Immunocytochemistry image of ab110293 stained Human HepG2 cells. The cells were paraformaldehyde fixed (4%, 20 min) and Triton X-100 permeabilized (0.1%, 15 min). The cells were incubated with ab110293 at 4 µg/ml for 2h at room temperature, or over night at 4°C. The secondary antibody was (red) Alexa Fluor® 594 goat anti-mouse IgG (H+L) used at a 1/1000 dilution for 1h. 10% Goat serum was used as the blocking agent for all blocking steps. DAPI was used to stain the cell nuclei (blue). Target protein locates mainly in mitochondria.

HL-60 cells were stained with 1 µg/mL of ab110293 (blue) or an equal amount of an isotype control antibody (red) and analyzed by flow cytometry.

SDS-PAGE analysis of IP samples. As an IP antibody, ab110293 works with human, bovine, rat, and mouse samples.

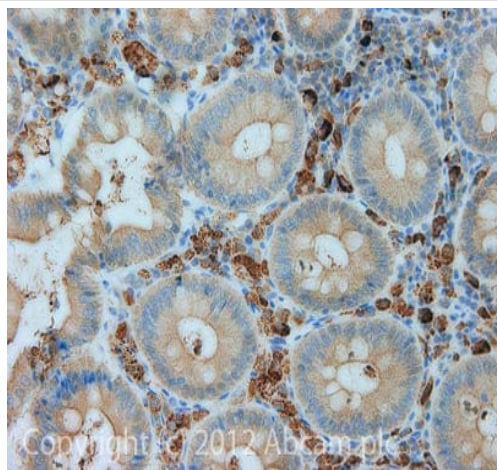
Lane STD: Molecular weight ladder

Lane HLM: Human liver mitochondria

Lane BHM: Bovine heart mitochondria

Lane RLM: Rat liver mitochondria

Lane MLM: Mouse liver mitochondria



Immunohistochemistry (Formalin/PFA-fixed paraffin-embedded sections) - Anti-CPT2 antibody [1C2AE6] (ab110293)

IHC image of CPT2 staining in Human normal colon formalin fixed paraffin embedded tissue section, performed on a Leica BondTM system using the standard protocol F. The section was pre-treated using heat mediated antigen retrieval with sodium citrate buffer (pH6, epitope retrieval solution 1) for 20 mins. The section was then incubated with ab110293, 10µg/ml, for 15 mins at room temperature and detected using an HRP conjugated compact polymer system. DAB was used as the chromogen. The section was then counterstained with haematoxylin and mounted with DPX.

For other IHC staining systems (automated and non-automated) customers should optimize variable parameters such as antigen retrieval conditions, primary antibody concentration and antibody incubation times.

Please note: All products are "FOR RESEARCH USE ONLY. NOT FOR USE IN DIAGNOSTIC PROCEDURES"

Our Abpromise to you: Quality guaranteed and expert technical support

- Replacement or refund for products not performing as stated on the datasheet
- Valid for 12 months from date of delivery
- Response to your inquiry within 24 hours
- We provide support in Chinese, English, French, German, Japanese and Spanish
- Extensive multi-media technical resources to help you
- We investigate all quality concerns to ensure our products perform to the highest standards

If the product does not perform as described on this datasheet, we will offer a refund or replacement. For full details of the Abpromise, please visit <https://www.abcam.cn/abpromise> or contact our technical team.

Terms and conditions

- Guarantee only valid for products bought direct from Abcam or one of our authorized distributors