


Anti-CPOX antibody ab96061

1 图像

概述

产品名称	Anti-CPOX抗体
描述	兔多克隆抗体to CPOX
宿主	Rabbit
经测试应用	适用于: WB
种属反应性	与反应: Human 预测可用于: Mouse, Rat 
免疫原	Recombinant fragment corresponding to Human CPOX aa 139-393. Database link: NP_000088
阳性对照	HCT116 whole cell lysate
常规说明	<p>The Life Science industry has been in the grips of a reproducibility crisis for a number of years. Abcam is leading the way in addressing this with our range of recombinant monoclonal antibodies and knockout edited cell lines for gold-standard validation. Please check that this product meets your needs before purchasing.</p> <p>If you have any questions, special requirements or concerns, please send us an inquiry and/or contact our Support team ahead of purchase. Recommended alternatives for this product can be found below, along with publications, customer reviews and Q&As</p>

性能

形式	Liquid
存放说明	Shipped at 4°C. Upon delivery aliquot and store at -20°C or -80°C. Avoid repeated freeze / thaw cycles.
存储溶液	pH: 7.00 Preservative: 0.01% Thimerosal (merthiolate) Constituents: 1.21% Tris, 0.75% Glycine, 10% Glycerol (glycerin, glycerine)
纯度	Immunogen affinity purified
克隆	多克隆
同种型	IgG

应用

The Abpromise guarantee

Abpromise™ 承诺保证使用ab96061于以下的经测试应用

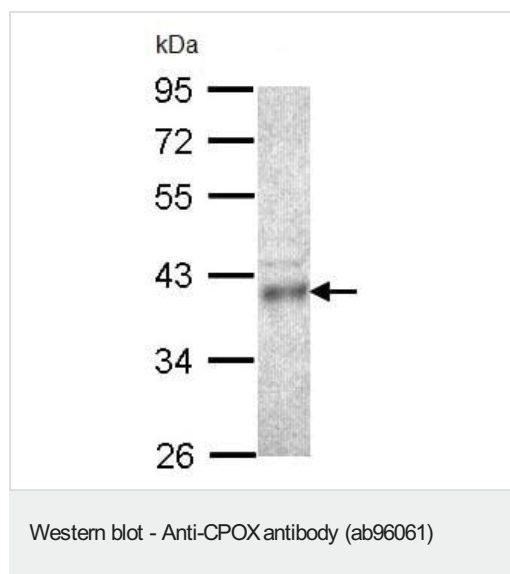
“应用说明”部分 下显示的仅为推荐的起始稀释度;实际最佳的稀释度/浓度应由使用者检定。

应用	Ab评论	说明
WB		1/1000. Predicted molecular weight: 50 kDa.

靶标

功能	Key enzyme in heme biosynthesis. Catalyzes the oxidative decarboxylation of propionic acid side chains of rings A and B of coproporphyrin III.
通路	Porphyrin metabolism; protoporphyrin-IX biosynthesis; protoporphyrin-IX from coproporphyrinogen-III (O2 route): step 1/1.
疾病相关	Defects in CPOX are the cause of hereditary coproporphyria (HCP) [MIM:121300]. HCP is an acute hepatic porphyria and an autosomal dominant disease characterized by neuropsychiatric disturbances and skin photosensitivity. Biochemically, there is an overexcretion of coproporphyrin III in the urine and in the feces. HCP is clinically characterized by attacks of abdominal pain, neurological disturbances, and psychiatric symptoms. The symptoms are generally manifested with rapid onset, and can be precipitated by drugs, alcohol, caloric deprivation, infection, endocrine factors or stress. A severe variant form is harderoporphyria, which is characterized by earlier onset attacks, massive excretion of harderoporphyria in the feces, and a marked decrease of coproporphyrinogen IX oxidase activity.
序列相似性	Belongs to the aerobic coproporphyrinogen-III oxidase family.
细胞定位	Mitochondrion intermembrane space.

图片



Anti-CPOX antibody (ab96061) at 1/1000 dilution + HCT116 whole cell lysate at 30 µg

Predicted band size: 50 kDa

10% SDS PAGE

Please note: All products are "FOR RESEARCH USE ONLY. NOT FOR USE IN DIAGNOSTIC PROCEDURES"

Our Abpromise to you: Quality guaranteed and expert technical support

- Replacement or refund for products not performing as stated on the datasheet
- Valid for 12 months from date of delivery
- Response to your inquiry within 24 hours

- We provide support in Chinese, English, French, German, Japanese and Spanish
- Extensive multi-media technical resources to help you
- We investigate all quality concerns to ensure our products perform to the highest standards

If the product does not perform as described on this datasheet, we will offer a refund or replacement. For full details of the Abpromise, please visit <https://www.abcam.cn/abpromise> or contact our technical team.

Terms and conditions

- Guarantee only valid for products bought direct from Abcam or one of our authorized distributors