


Anti-CP110 antibody ab99338

4 References **2 图像**

概述

| | |
|-------|---|
| 产品名称 | Anti-CP110抗体 |
| 描述 | 兔多克隆抗体to CP110 |
| 宿主 | Rabbit |
| 经测试应用 | 适用于: WB, IP |
| 种属反应性 | 与反应: Human 预测可用于: Rabbit, Horse, Guinea pig, Cow, Dog, Pig, Chimpanzee, Rhesus monkey, Gorilla, Orangutan, Elephant  |
| 免疫原 | Synthetic peptide corresponding to a region within amino acids 962-1012 of Human CP110 (CAH18111.1). |
| 阳性对照 | HeLa and 293T whole cell lysates |
| 常规说明 | <p>The Life Science industry has been in the grips of a reproducibility crisis for a number of years. Abcam is leading the way in addressing this with our range of recombinant monoclonal antibodies and knockout edited cell lines for gold-standard validation. Please check that this product meets your needs before purchasing.</p> <p>If you have any questions, special requirements or concerns, please send us an inquiry and/or contact our Support team ahead of purchase. Recommended alternatives for this product can be found below, along with publications, customer reviews and Q&As</p> |

性能

| | |
|------|--|
| 形式 | Liquid |
| 存放说明 | Shipped at 4°C. Upon delivery aliquot and store at -20°C. Avoid freeze / thaw cycles. |
| 存储溶液 | <p>pH: 6.8</p> <p>Preservative: 0.09% Sodium azide</p> <p>Constituents: 0.1% BSA, Tris buffered saline</p> |
| 纯度 | Immunogen affinity purified |
| 克隆 | 多克隆 |
| 同种型 | IgG |

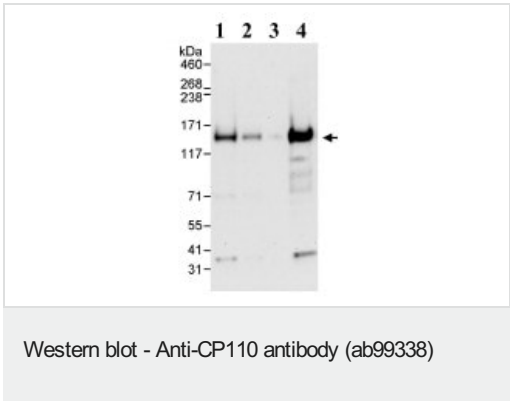
应用

| The Abpromise guarantee | | Abpromise™ 承诺保证使用ab99338于以下的经测试应用 |
|---|------|--|
| “应用说明”部分 下显示的仅为推荐的起始稀释度;实际最佳的稀释度/浓度应由使用者检定。 | | |
| 应用 | Ab评论 | 说明 |
| WB | | 1/2000 - 1/10000. Predicted molecular weight: 113 kDa. |
| IP | | Use at 2-5 µg/mg of lysate. |

靶标

| | |
|-------|--|
| 功能 | Necessary for centrosome duplication at different stages of procentriole formation. Collaborates with CEP97, being involved in the suppression of a cilia assembly program. Required for correct spindle formation and has a role in regulating cytokinesis and genome stability via cooperation with CALM1 and CETN2. |
| 组织特异性 | Highly expressed in testis. Detected at intermediate levels in spleen, thymus, prostate, small intestine, colon and peripheral blood leukocytes. |
| 翻译后修饰 | Phosphorylated by CDKs. Ubiquitinated by the SCF(Cyclin F) during G2 phase, leading to its degradation by the proteasome and preventing centrosome reduplication. |
| 细胞定位 | Cytoplasm > cytoskeleton > centrosome > centriole. Recruited early and then associates with the growing distal tips. |

图片



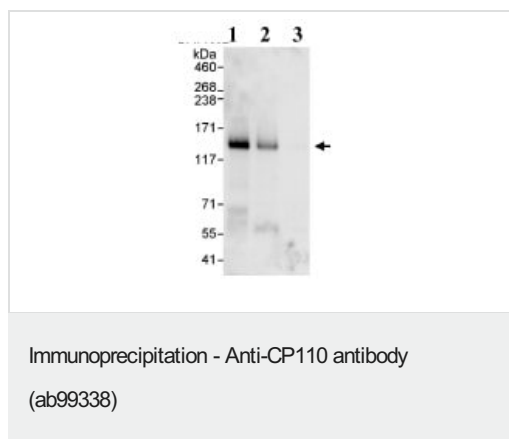
All lanes : Anti-CP110 antibody (ab99338) at 0.04 µg/ml

- Lane 1 :** Hela whole cell lysate at 50 µg
- Lane 2 :** Hela whole cell lysate at 15 µg
- Lane 3 :** Hela whole cell lysate at 5 µg
- Lane 4 :** 293T whole cell lysate at 50 µg

Developed using the ECL technique.

Predicted band size: 113 kDa

Exposure time: 30 seconds



Detection of Human CP110 by Immunoprecipitation (IP) from HeLa whole cell lysate (1 mg for IP, 20% of IP loaded).

1. IP with a CP110 antibody which recognizes an upstream epitope
2. IP with ab99338 at 3 µg/mg lysate
3. Control IgG IP

Subsequent WB detection was performed using ab99338 at 1 µg/ml.

Please note: All products are "FOR RESEARCH USE ONLY. NOT FOR USE IN DIAGNOSTIC PROCEDURES"

Our Abpromise to you: Quality guaranteed and expert technical support

- Replacement or refund for products not performing as stated on the datasheet
- Valid for 12 months from date of delivery
- Response to your inquiry within 24 hours
- We provide support in Chinese, English, French, German, Japanese and Spanish
- Extensive multi-media technical resources to help you
- We investigate all quality concerns to ensure our products perform to the highest standards

If the product does not perform as described on this datasheet, we will offer a refund or replacement. For full details of the Abpromise, please visit <https://www.abcam.cn/abpromise> or contact our technical team.

Terms and conditions

- Guarantee only valid for products bought direct from Abcam or one of our authorized distributors