

Anti-COX6B1 antibody [EPR7647] ab131277

重组 RabMAb

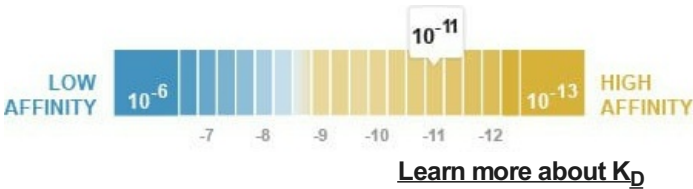
★★★★★ 1 Abreviews 1 References 5 图像

概述

产品名称	Anti-COX6B1抗体[EPR7647]
描述	兔单克隆抗体[EPR7647] to COX6B1
宿主	Rabbit
经测试应用	适用于: WB, IHC-P, ICC/IF 不适用于: Flow Cyt
种属反应性	与反应: Human
免疫原	Synthetic peptide. This information is proprietary to Abcam and/or its suppliers.
阳性对照	HL60, HeLa, HepG2 and Caco 2 cell lysates; HepG2 cells;. Human colon tissue.
常规说明	<p>This product is a recombinant monoclonal antibody, which offers several advantages including:</p> <ul style="list-style-type: none">- High batch-to-batch consistency and reproducibility- Improved sensitivity and specificity- Long-term security of supply- Animal-free production <p>For more information see here.</p> <p>Our RabMAb[®] technology is a patented hybridoma-based technology for making rabbit monoclonal antibodies. For details on our patents, please refer to RabMAb[®] patents.</p> <p>Mouse, Rat: We have preliminary internal testing data to indicate this antibody may not react with these species. Please contact us for more information.</p>

性能

形式	Liquid
存放说明	Shipped at 4°C. Store at -20°C. Stable for 12 months at -20°C.
解离常数 (K _D)	K _D = 2.49 x 10 ⁻¹¹ M



存储溶液	pH: 7.20 Preservative: 0.01% Sodium azide Constituents: 9% PBS, 40% Glycerol (glycerin, glycerine), 0.05% BSA, 50% Tissue culture supernatant
纯度	Protein A purified
克隆	单克隆
克隆编号	EPR7647
同种型	IgG

应用

The Abpromise guarantee
Abpromise™承诺保证使用ab131277于以下的经测试应用

“应用说明”部分 下显示的仅为推荐的起始稀释度;实际最佳的稀释度/浓度应由使用者检定。

应用	Ab评论	说明
WB		1/1000 - 1/10000. Detects a band of approximately 10 kDa (predicted molecular weight: 10 kDa).
IHC-P	★★★★★ (1)	1/50 - 1/100. Perform heat mediated antigen retrieval with citrate buffer pH 6 before commencing with IHC staining protocol.
ICC/IF		1/50 - 1/100.

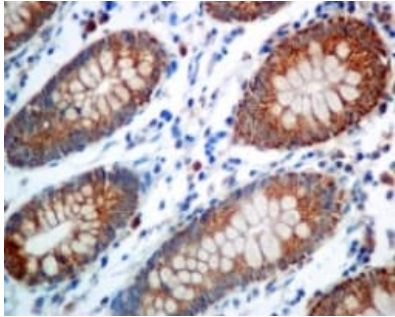
应用说明

Is unsuitable for Flow Cyt.

靶标

功能	Connects the two COX monomers into the physiological dimeric form.
疾病相关	Defects in COX6B1 are a cause of mitochondrial complex IV deficiency (MT-C4D) [MIM:220110]; also known as cytochrome c oxidase deficiency. A disorder of the mitochondrial respiratory chain with heterogeneous clinical manifestations, ranging from isolated myopathy to severe multisystem disease affecting several tissues and organs. Features include hypertrophic cardiomyopathy, hepatomegaly and liver dysfunction, hypotonia, muscle weakness, excercise intolerance, developmental delay, delayed motor development and mental retardation. A subset of patients manifest Leigh syndrome.
序列相似性	Belongs to the cytochrome c oxidase subunit 6B family.
细胞定位	Mitochondrion intermembrane space.

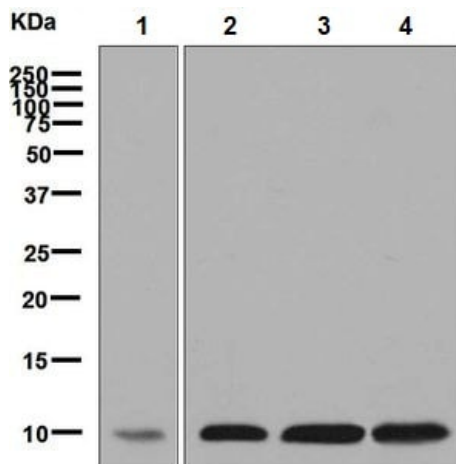
图片



Immunohistochemistry (Formalin/PFA-fixed paraffin-embedded sections) - Anti-COX6B1 antibody [EPR7647] (ab131277)

Immunohistochemical analysis of paraffin-embedded Human colon tissue labelling COX6B1 with ab131277 at 1/50 dilution.

Perform heat mediated antigen retrieval with citrate buffer pH 6 before commencing with IHC staining protocol.



Western blot - Anti-COX6B1 antibody [EPR7647] (ab131277)

All lanes : Anti-COX6B1 antibody [EPR7647] (ab131277) at 1/1000 dilution

Lane 1 : HL60 cell lysate

Lane 2 : HepG2 cell lysate

Lane 3 : HeLa cell lysate

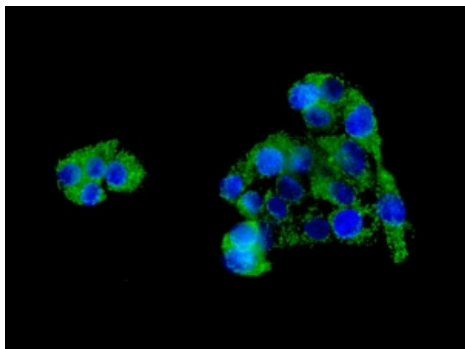
Lane 4 : Caco-2 cell lysate

Lysates/proteins at 10 µg per lane.

Secondary

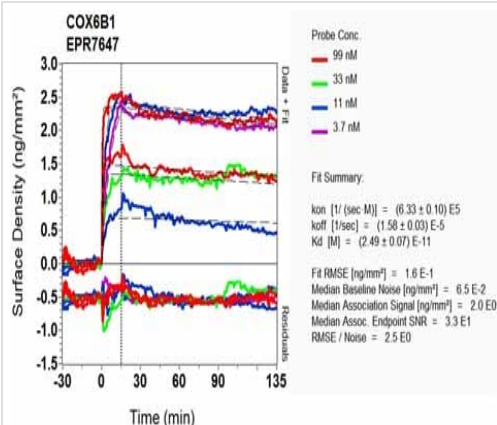
All lanes : HRP labelled goat anti-rabbit at 1/2000 dilution

Predicted band size: 10 kDa



Immunocytochemistry/ Immunofluorescence - Anti-COX6B1 antibody [EPR7647] (ab131277)

Immunofluorescent analysis of HepG2 cells labelling COX6B1 with ab131277 at 1/50 dilution.



Ox-BD Scanning - Anti-COX6B1 antibody [EPR7647] (ab131277)

Equilibrium dissociation constant (K_D)

Learn more about K_D

[Click here to learn more about \$K_D\$](#)

Why choose a recombinant antibody?



Research with confidence
Consistent and reproducible results



Long-term and scalable supply
Recombinant technology



Success from the first experiment
Confirmed specificity



Ethical standards compliant
Animal-free production

Anti-COX6B1 antibody [EPR7647] (ab131277)

Please note: All products are "FOR RESEARCH USE ONLY. NOT FOR USE IN DIAGNOSTIC PROCEDURES"

Our Abpromise to you: Quality guaranteed and expert technical support

- Replacement or refund for products not performing as stated on the datasheet
- Valid for 12 months from date of delivery
- Response to your inquiry within 24 hours
- We provide support in Chinese, English, French, German, Japanese and Spanish
- Extensive multi-media technical resources to help you
- We investigate all quality concerns to ensure our products perform to the highest standards

If the product does not perform as described on this datasheet, we will offer a refund or replacement. For full details of the Abpromise, please visit <https://www.abcam.cn/abpromise> or contact our technical team.

Terms and conditions

- Guarantee only valid for products bought direct from Abcam or one of our authorized distributors