

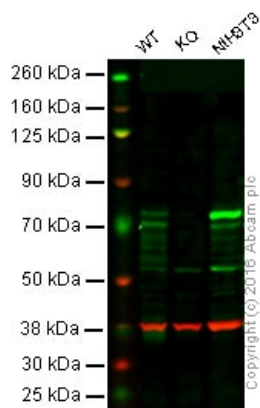
Anti-Cortactin antibody [EPR1923Y] ab68438

敲除验证 重组 RabMAb

1 References 4 图像

概述	
产品名称	Anti-Cortactin抗体[EPR1923Y]
描述	兔单克隆抗体[EPR1923Y] to Cortactin
宿主	Rabbit
经测试应用	适用于: Flow Cyt (Intra), WB 不适用于: IHC-P or IP
种属反应性	与反应: Mouse, Rat, Human
免疫原	Synthetic peptide within Human Cortactin aa 500-600 (C terminal). The exact sequence is proprietary.
阳性对照	C6, MCF-7, Hela and A431 cell lysate and permeabilized MCF-7 cells.
常规说明	<p>This product is a recombinant monoclonal antibody, which offers several advantages including:</p> <ul style="list-style-type: none"><li>- High batch-to-batch consistency and reproducibility</li><li>- Improved sensitivity and specificity</li><li>- Long-term security of supply</li><li>- Animal-free production</li></ul> <p>For more information <a href="#">see here</a>.</p> <p>Our RabMAb<sup>®</sup> technology is a patented hybridoma-based technology for making rabbit monoclonal antibodies. For details on our patents, please refer to <a href="#">RabMAb<sup>®</sup> patents</a>.</p>
性能	
形式	Liquid
存放说明	Shipped at 4°C. Upon delivery aliquot and store at -20°C. Avoid freeze / thaw cycles.
存储溶液	pH: 7.2 Preservative: 0.05% Sodium azide Constituents: 0.1% BSA, 40% Glycerol (glycerin, glycerine), 9.85% Tris glycine, 50% Tissue culture supernatant
纯度	Protein A purified
克隆	单克隆
克隆编号	EPR1923Y

同种型	IgG	
应用		
<div>The Abpromise guarantee</div> <div>Abpromise™承诺保证使用ab68438于以下的经测试应用</div> <div>“应用说明”部分 下显示的仅为推荐的起始稀释度;实际最佳的稀释度/浓度应由使用者检定。</div>		
应用	Ab评论	说明
Flow Cyt (Intra)		
WB		
应用说明	<div>Flow Cyt: 1/30.</div> <div>ICC: 1/100 - 1/250.</div> <div>WB: 1/5000. Detects bands of approximately 75 and 80 kDa (predicted molecular weight: 80 kDa).</div> <div>Is unsuitable for IHC-P or IP.</div> <div>Not yet tested in other applications.</div> <div>Optimal dilutions/concentrations should be determined by the end user.</div>	
靶标		
功能	<div>Contributes to the organization of the actin cytoskeleton and cell structure. Plays a role in the regulation of cell migration. Plays a role in the invasiveness of cancer cells, and the formation of metastases.</div>	
序列相似性	<div>Contains 7 cortactin repeats.</div> <div>Contains 1 SH3 domain.</div>	
结构域	<div>The SH3 motif may mediate binding to the cytoskeleton.</div>	
翻译后修饰	<div>Tyrosine phosphorylation in transformed cells may contribute to cellular growth regulation and transformation.</div>	
细胞定位	<div>Cytoplasm &gt; cytoskeleton. Cell projection &gt; lamellipodium. Cell projection &gt; ruffle. Associated with membrane ruffles and lamellipodia.</div>	
图片		



Western blot - Anti-Cortactin antibody [EPR1923Y]  
(ab68438)

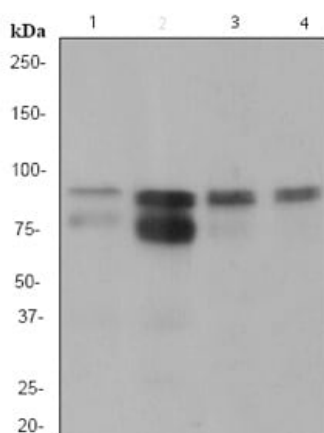
**Lane 1:** Wild-type HAP1 cell lysate (40 µg)

**Lane 2:** Cortactin knockout HAP1 cell lysate (40 µg)

**Lane 3:** NIH3T3 cell lysate (20 µg)

**Lanes 1 - 4:** Merged signal (red and green). Green - ab68438 observed at 70 kDa. Red - loading control, **ab8245**, observed at 37 kDa.

ab68438 was shown to specifically recognize Cortactin in wild-type HAP1 cells along with additional cross-reactive bands. No band was observed when Cortactin knockout samples were examined. Wild-type and Cortactin knockout samples were subjected to SDS-PAGE. Ab68438 and **ab8245** (loading control to GAPDH) were diluted at 1/1000 and 1/10,000 dilution respectively and incubated overnight at 4°C. Blots were developed with Goat anti-Rabbit IgG H&L (IRDye® 800CW) preadsorbed **ab216773** and Goat anti-Mouse IgG H&L (IRDye® 680RD) preadsorbed **ab216776** secondary antibodies at 1/10,000 dilution for 1 hour at room temperature before imaging.



Western blot - Anti-Cortactin antibody [EPR1923Y]  
(ab68438)

**All lanes :** Anti-Cortactin antibody [EPR1923Y] (ab68438) at 1/5000 dilution

**Lane 1 :** C6 cell lysate

**Lane 2 :** MCF-7 cell lysate

**Lane 3 :** Hela cell lysate

**Lane 4 :** A431 cell lysate

Lysates/proteins at 10 µg per lane.

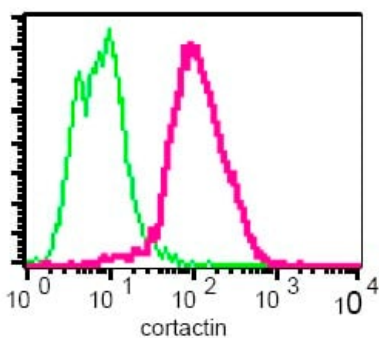
### Secondary

**All lanes :** HRP labelled goat anti-rabbit at 1/2000 dilution

**Predicted band size:** 80 kDa

**Observed band size:** 80 kDa

**Additional bands at:** 75 kDa. We are unsure as to the identity of these extra bands.



Intracellular flow cytometric analysis of permeabilized MCF-7 cells using ab68438 1/30 dilution (pink) or a rabbit IgG (negative) (green).

Flow Cytometry (Intracellular) - Anti-Cortactin antibody [EPR1923Y] (ab68438)

### Why choose a recombinant antibody?



**Research with confidence**  
Consistent and reproducible results



**Long-term and scalable supply**  
Recombinant technology



**Success from the first experiment**  
Confirmed specificity



**Ethical standards compliant**  
Animal-free production

Anti-Cortactin antibody [EPR1923Y] (ab68438)

**Please note:** All products are "FOR RESEARCH USE ONLY. NOT FOR USE IN DIAGNOSTIC PROCEDURES"

### Our Abpromise to you: Quality guaranteed and expert technical support

- Replacement or refund for products not performing as stated on the datasheet
- Valid for 12 months from date of delivery
- Response to your inquiry within 24 hours
- We provide support in Chinese, English, French, German, Japanese and Spanish
- Extensive multi-media technical resources to help you
- We investigate all quality concerns to ensure our products perform to the highest standards

If the product does not perform as described on this datasheet, we will offer a refund or replacement. For full details of the Abpromise, please visit <https://www.abcam.cn/abpromise> or contact our technical team.

### Terms and conditions

- Guarantee only valid for products bought direct from Abcam or one of our authorized distributors

