



Anti-Cornulin antibody ab224122

1 图像

概述

产品名称	Anti-Cornulin抗体
描述	兔多克隆抗体to Cornulin
宿主	Rabbit
经测试应用	适用于: IHC-P
种属反应性	与反应: Human
免疫原	Recombinant fragment corresponding to Human Cornulin aa 150-300. Database link: Q9UBG3
	 Run BLAST with  Run BLAST with
阳性对照	IHC-P: Human oral mucosa tissue.
常规说明	<p>The Life Science industry has been in the grips of a reproducibility crisis for a number of years. Abcam is leading the way in addressing this with our range of recombinant monoclonal antibodies and knockout edited cell lines for gold-standard validation. Please check that this product meets your needs before purchasing.</p> <p>If you have any questions, special requirements or concerns, please send us an inquiry and/or contact our Support team ahead of purchase. Recommended alternatives for this product can be found below, along with publications, customer reviews and Q&As</p>

性能

形式	Liquid
存放说明	Shipped at 4°C. Store at +4°C short term (1-2 weeks). Upon delivery aliquot. Store at -20°C long term. Avoid freeze / thaw cycle.
存储溶液	pH: 7.20 Preservative: 0.02% Sodium azide Constituents: 40% Glycerol (glycerin, glycerine), PBS
纯度	Immunogen affinity purified
克隆	多克隆
同种型	IgG

应用

The Abpromise guarantee

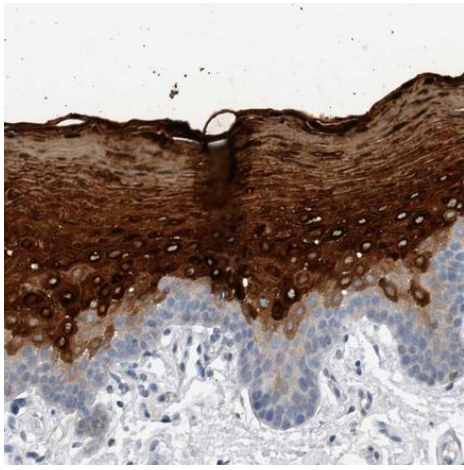
Abpromise™承诺保证使用ab224122于以下的经测试应用

“应用说明”部分 下显示的仅为推荐的起始稀释度;实际最佳的稀释度/浓度应由使用者检定。

应用	Ab评论	说明
IHC-P		1/50 - 1/200. Perform heat mediated antigen retrieval with citrate buffer pH 6 before commencing with IHC staining protocol.

靶标	
功能	Survival factor that participates in the clonogenicity of squamous esophageal epithelium cell lines, attenuates deoxycholic acid (DCA)-induced apoptotic cell death and release of calcium. When overexpressed in oral squamous carcinom cell lines, regulates negatively cell proliferation by the induction of G1 arrest.
组织特异性	Squamous epithelia cell-specific. Expressed in the esophagus (periphery of the cells of the granular and the upper spinous layers), foreskin (granular and lower cornified cells), scalp skin (granular layer), inner root sheath of the hair follicle and in primary keratinocytes (at protein level). Expressed in the squamous epithelium of the cervix, esophagus, foreskin and larynx. Expressed in the fetal bladder and scalp skin. Expressed at very low levels in the lung, kidney, uterus, skeletal muscle, heart and fetal brain. Undetectable or barely detectable in esophageal and oral squamous cell carcinoma compared with the matched adjacent normal esophageal mucosa. Undetectable or barely detectable in larynx and esophagus from patients with pH-documented laryngopharyngeal reflux (LPR).
序列相似性	Belongs to the S100-fused protein family. Contains 1 EF-hand domain.
结构域	The EF-hand is necessary for the colony survival activity to protect cells from death induced by exposure to DCA.
细胞定位	Cytoplasm. Does not colocalize with TGM1.

图片



Immunohistochemistry (Formalin/PFA-fixed paraffin-embedded sections) - Anti-Cornulin antibody (ab224122)

Paraffin-embedded human oral mucosa tissue stained for Cornulin with ab224122 (1/50) in immunohistochemical analysis.

Please note: All products are "FOR RESEARCH USE ONLY. NOT FOR USE IN DIAGNOSTIC PROCEDURES"

Our Abpromise to you: Quality guaranteed and expert technical support

- Replacement or refund for products not performing as stated on the datasheet
- Valid for 12 months from date of delivery
- Response to your inquiry within 24 hours
- We provide support in Chinese, English, French, German, Japanese and Spanish
- Extensive multi-media technical resources to help you
- We investigate all quality concerns to ensure our products perform to the highest standards

If the product does not perform as described on this datasheet, we will offer a refund or replacement. For full details of the Abpromise, please visit <https://www.abcam.cn/abpromise> or contact our technical team.

Terms and conditions

- Guarantee only valid for products bought direct from Abcam or one of our authorized distributors