


Anti-CoREST2 / RCOR2 antibody ab37113

★★★★★ [4 Abreviews](#) [4 References](#) [3 图像](#)

概述

产品名称	Anti-CoREST2 / RCOR2抗体
描述	兔多克隆抗体to CoREST2 / RCOR2
宿主	Rabbit
经测试应用	适用于: WB, IHC-P
种属反应性	与反应: Human 预测可用于: Mouse, Rat 
免疫原	Synthetic peptide conjugated to KLH derived from within residues 200 - 300 of Human CoREST2/RCOR2.参阅Abcam的专有抗源政策(Peptide available as ab37307 .)
阳性对照	IHC-P: FFPE human testis tissue sections.
常规说明	<p>The Life Science industry has been in the grips of a reproducibility crisis for a number of years. Abcam is leading the way in addressing this with our range of recombinant monoclonal antibodies and knockout edited cell lines for gold-standard validation. Please check that this product meets your needs before purchasing.</p> <p>If you have any questions, special requirements or concerns, please send us an inquiry and/or contact our Support team ahead of purchase. Recommended alternatives for this product can be found below, along with publications, customer reviews and Q&As</p>

性能

形式	Liquid
存放说明	Shipped at 4°C. Store at +4°C short term (1-2 weeks). Upon delivery aliquot. Store at -20°C or -80°C. Avoid freeze / thaw cycle.
存储溶液	pH: 7.40 Preservative: 0.02% Sodium azide Constituent: PBS
纯度	Batches of this product that have a concentration < 1mg/ml may have BSA added as a stabilising agent. If you would like information about the formulation of a specific lot, please contact our scientific support team who will be happy to help.
克隆	Immunogen affinity purified 多克隆

同种型IgG

应用

The Abpromise guarantee Abpromise™承诺保证使用ab37113于以下的经测试应用

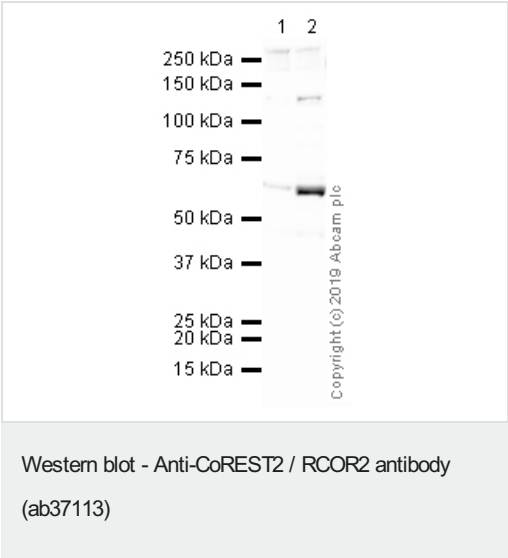
“应用说明”部分 下显示的仅为推荐的起始稀释度;实际最佳的稀释度/浓度应由使用者检定。

应用	Ab评论	说明
WB	★★★★★ (3)	Use a concentration of 1 µg/ml. Detects a band of approximately 45 kDa (predicted molecular weight: 58 kDa).
IHC-P		Use a concentration of 1 µg/ml. Perform heat mediated antigen retrieval with citrate buffer pH 6 before commencing with IHC staining protocol.

靶标

功能	May act as a component of a corepressor complex that represses transcription.
序列相似性	Belongs to the CoREST family. Contains 1 ELM2 domain. Contains 2 SANT domains.
细胞定位	Nucleus.

图片



All lanes : Anti-CoREST2 / RCOR2 antibody (ab37113) at 1 µg/ml

Lane 1 : MCF7 (Human breast adenocarcinoma cell line) Whole Cell Lysate

Lane 2 : HepG2 (Human hepatocellular liver carcinoma cell line) Whole Cell Lysate

Lysates/proteins at 25 µg per lane.

Secondary

All lanes : Goat Anti-Rabbit IgG H&L (HRP) at 1/50000 dilution

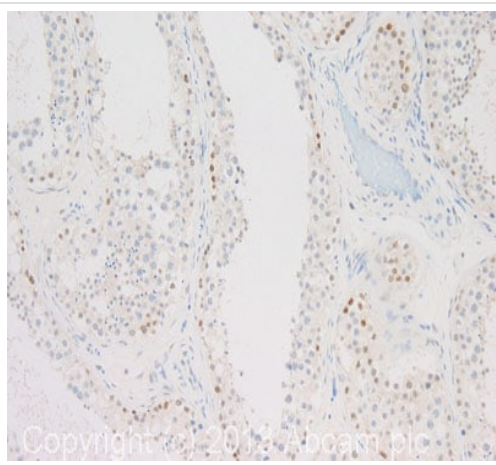
Performed under reducing conditions.

Predicted band size: 58 kDa

Observed band size: 60 kDa

Exposure time: 4 minutes

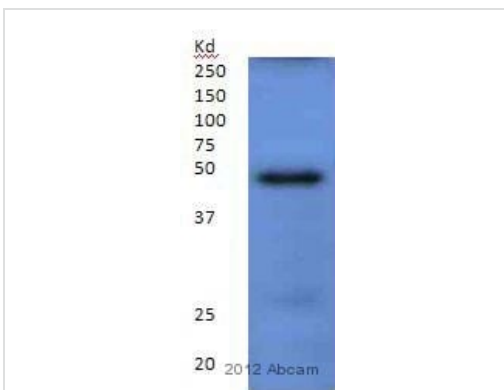
This blot was produced using a 4-12% Bis-tris gel under the MOPS buffer system. The gel was run at 200V for 50 minutes before being transferred onto a Nitrocellulose membrane at 30V for 70 minutes. The membrane was then blocked for an hour using 2% Bovine Serum Albumin before being incubated with ab37113 overnight at 4°C. Antibody binding was detected using an **anti-rabbit HRP** secondary antibody, and visualised using ECL development solution **ab133406**.



Immunohistochemistry (Formalin/PFA-fixed paraffin-embedded sections) - Anti-CoREST2 / RCOR2 antibody (ab37113)

IHC image of CoREST/RCOR2 staining in human testis formalin fixed paraffin embedded tissue section, performed on a Leica Bond system using the standard protocol F. The section was pre-treated using heat mediated antigen retrieval with sodium citrate buffer (pH6, epitope retrieval solution 1) for 20 mins. The section was then incubated with ab37113, 1µg/ml, for 15 mins at room temperature and detected using an HRP conjugated compact polymer system. DAB was used as the chromogen. The section was then counterstained with haematoxylin and mounted with DPX.

For other IHC staining systems (automated and non-automated) customers should optimize variable parameters such as antigen retrieval conditions, primary antibody concentration and antibody incubation times.



Western blot - Anti-CoREST2 / RCOR2 antibody (ab37113)

This image is courtesy of an anonymous abreview.

Anti-CoREST2 / RCOR2 antibody (ab37113) at 1/1000 dilution + MCF7 cells

Secondary

HRP conjugated donkey anti-rabbit at 1/2000 dilution.

Developed using the ECL technique.

Performed under reducing conditions.

Predicted band size: 58 kDa

Observed band size: 45 kDa

Our Abpromise to you: Quality guaranteed and expert technical support

- Replacement or refund for products not performing as stated on the datasheet
- Valid for 12 months from date of delivery
- Response to your inquiry within 24 hours

- We provide support in Chinese, English, French, German, Japanese and Spanish
- Extensive multi-media technical resources to help you
- We investigate all quality concerns to ensure our products perform to the highest standards

If the product does not perform as described on this datasheet, we will offer a refund or replacement. For full details of the Abpromise, please visit <https://www.abcam.cn/abpromise> or contact our technical team.

Terms and conditions

- Guarantee only valid for products bought direct from Abcam or one of our authorized distributors