


Anti-COPS6 antibody ab77299

3 References 2 图像

概述	
产品名称	Anti-COPS6抗体
描述	兔多克隆抗体to COPS6
宿主	Rabbit
特异性	From Mar 2024, QC testing of replenishment batches of this polyclonal changed. All tested and expected application and reactive species combinations are still covered by our Abcam product promise. However, we no longer test all applications. For more information on a specific batch, please contact our Scientific Support who will be happy to help.
经测试应用	适用于: ICC/IF, WB
种属反应性	与反应: Mouse, Human 预测可用于: Cow, Pig, Zebrafish, Orangutan 
免疫原	Synthetic peptide corresponding to Human COPS6 aa 150-250. (Peptide available as ab92686)
阳性对照	This antibody gave a positive signal in NIH3T3 whole cell lysate.
常规说明	<p>The Life Science industry has been in the grips of a reproducibility crisis for a number of years. Abcam is leading the way in addressing this with our range of recombinant monoclonal antibodies and knockout edited cell lines for gold-standard validation. Please check that this product meets your needs before purchasing.</p> <p>If you have any questions, special requirements or concerns, please send us an inquiry and/or contact our Support team ahead of purchase. Recommended alternatives for this product can be found below, along with publications, customer reviews and Q&As</p>
性能	
形式	Liquid
存放说明	Shipped at 4°C. Store at +4°C short term (1-2 weeks). Upon delivery aliquot. Store at -20°C or -80°C. Avoid freeze / thaw cycle.
存储溶液	pH: 7.40 Preservative: 0.02% Sodium azide Constituent: PBS
Batches of this product that have a concentration < 1mg/ml may have BSA added as a stabilising	

agent. If you would like information about the formulation of a specific lot, please contact our scientific support team who will be happy to help.

纯度	Immunogen affinity purified
克隆	多克隆
同种型	IgG

应用

The Abpromise guarantee **Abpromise™** 承诺保证使用 ab77299 于以下的经测试应用

“应用说明”部分 下显示的仅为推荐的起始稀释度;实际最佳的稀释度/浓度应由使用者检定。

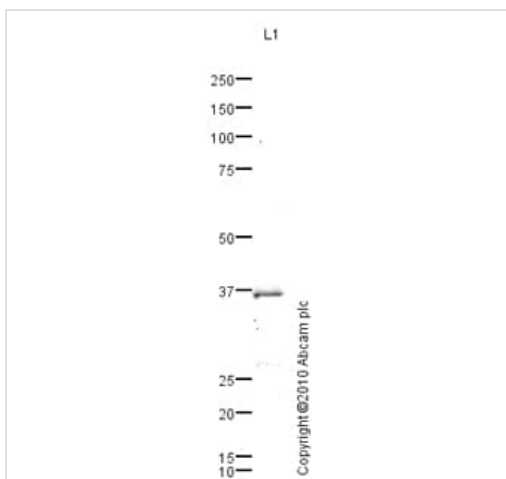
应用	Ab 评论	说明
ICC/IF		
WB		

应用说明	ICC/IF: Use at a concentration of 5 µg/ml. WB: Use at a concentration of 1 µg/ml. Detects a band of approximately 36 kDa (predicted molecular weight: 36 kDa). Not yet tested in other applications. Optimal dilutions/concentrations should be determined by the end user.
------	--

靶标

功能	Component of the COP9 signalosome complex (CSN), a complex involved in various cellular and developmental processes. The CSN complex is an essential regulator of the ubiquitin (Ubl) conjugation pathway by mediating the deneddylation of the cullin subunits of SCF-type E3 ligase complexes, leading to decrease the Ubl ligase activity of SCF-type complexes such as SCF, CSA or DDB2. The complex is also involved in phosphorylation of p53/TP53, c-jun/JUN, IκappaBα/NFκBIA, ITPK1 and IRF8, possibly via its association with CK2 and PKD kinases. CSN-dependent phosphorylation of TP53 and JUN promotes and protects degradation by the Ubl system, respectively. Has some glucocorticoid receptor-responsive activity.
组织特异性	Widely expressed.
序列相似性	Belongs to the peptidase M67A family. CSN6 subfamily. Contains 1 MPN (JAB/Mov34) domain.
细胞定位	Nucleus. Cytoplasm. The interaction with HIV-1 Vpr protein possibly leads its translocation to a perinuclear region.

图片



Western blot - Anti-COPS6 antibody (ab77299)

Anti-COPS6 antibody (ab77299) at 1 µg/ml + NIH 3T3 (Mouse embryonic fibroblast cell line) Whole Cell Lysate at 10 µg

Secondary

Goat polyclonal to Rabbit IgG - H&L - Pre-Adsorbed (HRP) at 1/3000 dilution

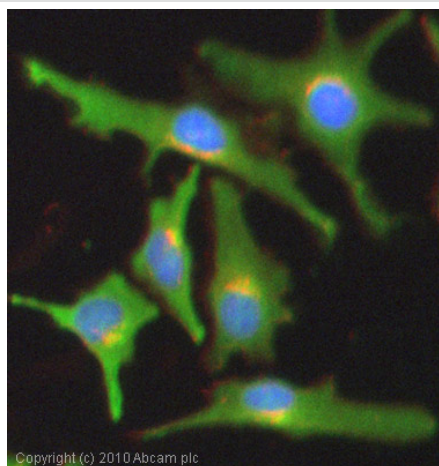
Developed using the ECL technique.

Performed under reducing conditions.

Predicted band size: 36 kDa

Observed band size: 36 kDa

Exposure time: 20 minutes



Immunocytochemistry/ Immunofluorescence - Anti-COPS6 antibody (ab77299)

ICC/IF image of ab77299 stained HeLa cells. The cells were 100% methanol fixed (5 min) and then incubated in 1%BSA / 10% normal goat serum / 0.3M glycine in 0.1% PBS-Tween for 1h to permeabilise the cells and block non-specific protein-protein interactions. The cells were then incubated with the antibody (ab77299, 5µg/ml) overnight at +4°C. The secondary antibody (green) was Alexa Fluor® 488 goat anti-rabbit IgG (H+L) used at a 1/1000 dilution for 1h. Alexa Fluor® 594 WGA was used to label plasma membranes (red) at a 1/200 dilution for 1h. DAPI was used to stain the cell nuclei (blue) at a concentration of 1.43µM. This antibody also gave a positive result in 100% methanol fixed (5 min) Hek293 and HepG2 cells at 5µg/ml, and in 4% PFA fixed (10 min) HeLa, Hek293, HepG2 and MCF7 cells at 5µg/ml.

Please note: All products are "FOR RESEARCH USE ONLY. NOT FOR USE IN DIAGNOSTIC PROCEDURES"

Our Abpromise to you: Quality guaranteed and expert technical support

- Replacement or refund for products not performing as stated on the datasheet
- Valid for 12 months from date of delivery
- Response to your inquiry within 24 hours
- We provide support in Chinese, English, French, German, Japanese and Spanish

- Extensive multi-media technical resources to help you
- We investigate all quality concerns to ensure our products perform to the highest standards

If the product does not perform as described on this datasheet, we will offer a refund or replacement. For full details of the Abpromise, please visit <https://www.abcam.cn/abpromise> or contact our technical team.

Terms and conditions

- Guarantee only valid for products bought direct from Abcam or one of our authorized distributors