


Anti-COPS3/CSN3 antibody ab12321

[2 References](#) [3 图像](#)

概述

产品名称	Anti-COPS3/CSN3抗体
描述	兔多克隆抗体to COPS3/CSN3
宿主	Rabbit
经测试应用	适用于: IHC-P, WB
种属反应性	与反应: Human 预测可用于: Mouse, Rat, Horse, Chicken, Guinea pig, Cow, Dog, Turkey, Xenopus laevis, Chimpanzee, Zebrafish, Rhesus monkey, Orangutan, Platypus 
免疫原	Synthetic peptide within Human COPS3/CSN3 aa 300-400. The exact immunogen sequence used to generate this antibody is proprietary information. If additional detail on the immunogen is needed to determine the suitability of the antibody for your needs, please contact our Scientific Support team to discuss your requirements. Database link: Q9UNS2
阳性对照	HEK 293T cells.
常规说明	Centrifuge tube to remove product from lid. The Life Science industry has been in the grips of a reproducibility crisis for a number of years. Abcam is leading the way in addressing this with our range of recombinant monoclonal antibodies and knockout edited cell lines for gold-standard validation. Please check that this product meets your needs before purchasing. If you have any questions, special requirements or concerns, please send us an inquiry and/or contact our Support team ahead of purchase. Recommended alternatives for this product can be found below, along with publications, customer reviews and Q&As

性能

形式	Liquid
存放说明	Shipped at 4°C. Upon delivery aliquot and store at -20°C. Avoid freeze / thaw cycles.
存储溶液	pH: 7 Preservative: 0.1% Sodium azide Constituents: 0.021% PBS, 1.764% Sodium citrate, 1.815% Tris
纯度	Immunogen affinity purified
纯化说明	Purified using the peptide immobilized on solid support.

克隆 多克隆
同种型 IgG

应用

The Abpromise guarantee **Abpromise™** 承诺保证使用 ab12321 于以下的经测试应用

“应用说明”部分 下显示的仅为推荐的起始稀释度;实际最佳的稀释度/浓度应由使用者检定。

应用	Ab评论	说明
IHC-P		1/500 - 1/2000. Perform heat mediated antigen retrieval with citrate buffer pH 6 before commencing with IHC staining protocol.
WB		1/5000 - 1/25000. Predicted molecular weight: 51 kDa.

靶标

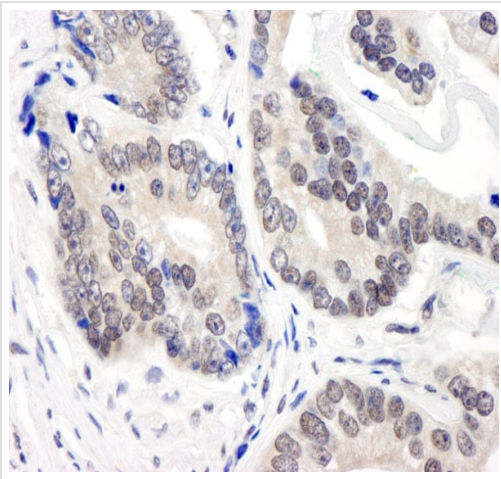
功能 Component of the COP9 signalosome complex (CSN), a complex involved in various cellular and developmental processes. The CSN complex is an essential regulator of the ubiquitin (Ubl) conjugation pathway by mediating the deneddylation of the cullin subunits of SCF-type E3 ligase complexes, leading to decrease the Ubl ligase activity of SCF-type complexes such as SCF, CSA or DDB2. The complex is also involved in phosphorylation of p53/TP53, c-jun/JUN, IκappaBα/NFKBIA, ITPK1 and IRF8/ICSBP, possibly via its association with CK2 and PKD kinases. CSN-dependent phosphorylation of TP53 and JUN promotes and protects degradation by the Ubl system, respectively.

组织特异性 Widely expressed. Expressed at high level in heart and skeletal muscle.

序列相似性 Belongs to the CSN3 family.
Contains 1 PCI domain.

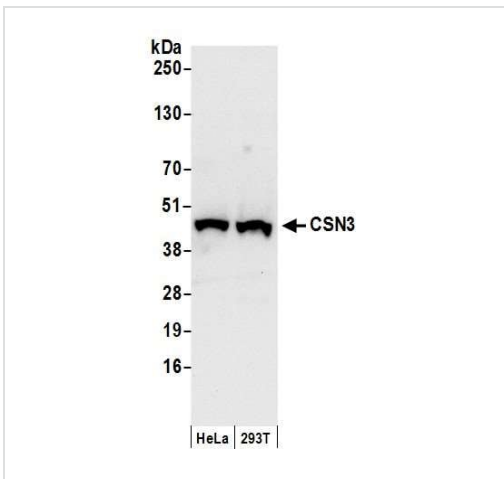
细胞定位 Cytoplasm. Nucleus.

图片



Immunohistochemistry (Formalin/PFA-fixed paraffin-embedded sections) - Anti-COPS3/CSN3 antibody (ab12321)

Immunohistochemistry (Formalin/PFA-fixed paraffin-embedded sections) analysis of human prostate carcinoma tissue labelling COPS3/CSN3 with ab12321 at 1/1000 (1 µg/ml). Detection: DAB.



Western blot - Anti-COPS3/CSN3 antibody (ab12321)

All lanes : Anti-COPS3/CSN3 antibody (ab12321) at 0.04 µg/ml

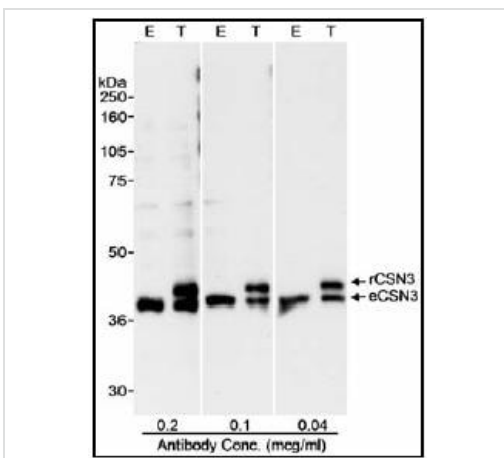
Lane 1 : HeLa cell lysate

Lane 2 : 293T cell lysate

Lysates/proteins at 50 µg per lane.

Predicted band size: 51 kDa

Exposure time: 10 seconds



Western blot - Anti-COPS3/CSN3 antibody (ab12321)

Detection of Human CSN3 by Western Blot.

Samples: Whole cell lysate (50 mcg E; 25 mcg T) from HEK 293T cells that were mock transfected (E) or transfected with a CSN3 expression construct (T). *Antibody:* Affinity purified rabbit anti-CSN3 antibody BL1059 used at the indicated concentrations.

Detection: Chemiluminescence with a 10 second exposure.

Detection of Human CSN3 by Western Blot.

Samples: Whole cell lysate (50 mcg E; 25 mcg T) from HEK 293T cells that were mock transfected (E) or transfected with a CSN3 expression construct (T).

Antibody: Affinity purified rabbit anti-CSN3 antibody BL1059 used at the indicated concentrations.

Detection: Chemiluminescence with a 10 second exposure.

Please note: All products are "FOR RESEARCH USE ONLY. NOT FOR USE IN DIAGNOSTIC PROCEDURES"

Our Abpromise to you: Quality guaranteed and expert technical support

- Replacement or refund for products not performing as stated on the datasheet
- Valid for 12 months from date of delivery
- Response to your inquiry within 24 hours

- We provide support in Chinese, English, French, German, Japanese and Spanish
- Extensive multi-media technical resources to help you
- We investigate all quality concerns to ensure our products perform to the highest standards

If the product does not perform as described on this datasheet, we will offer a refund or replacement. For full details of the Abpromise, please visit <https://www.abcam.cn/abpromise> or contact our technical team.

Terms and conditions

- Guarantee only valid for products bought direct from Abcam or one of our authorized distributors