


Anti-COMT antibody [EPR6491(B)] ab124813

敲除验证 重组 RabMAb

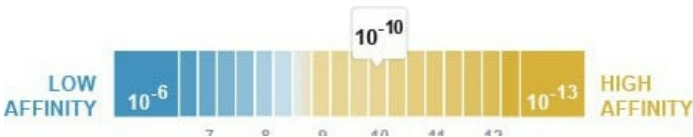
6 图像

概述

产品名称	Anti-COMT抗体[EPR6491(B)]
描述	兔单克隆抗体[EPR6491(B)] to COMT
宿主	Rabbit
经测试应用	适用于: WB, Flow Cyt 不适用于: ICC/IF, IHC-P or IP
种属反应性	与反应: Human 预测可用于: Rat 
免疫原	Synthetic peptide within Human COMT aa 250-350. The exact sequence is proprietary.
阳性对照	WB: HEK-293T, HAP1, A431 and MOLT4 cell lysates; Human fetal liver lysate. Flow Cyt: A431 cells.
常规说明	<p>This product is a recombinant monoclonal antibody, which offers several advantages including:</p> <ul style="list-style-type: none"><li>- High batch-to-batch consistency and reproducibility</li><li>- Improved sensitivity and specificity</li><li>- Long-term security of supply</li><li>- Animal-free production</li></ul> <p>For more information <a href="#">see here</a>.</p> <p>Our RabMAb<sup>®</sup> technology is a patented hybridoma-based technology for making rabbit monoclonal antibodies. For details on our patents, please refer to <a href="#">RabMAb<sup>®</sup> patents</a>.</p> <p>Mouse: We have preliminary internal testing data to indicate this antibody may not react with this species. Please contact us for more information.</p>

性能

形式	Liquid
存放说明	Shipped at 4°C. Store at -20°C. Stable for 12 months at -20°C.
解离常数 (K <sub>D</sub> )	K <sub>D</sub> = 1.01 x 10 <sup>-10</sup> M



[Learn more about K<sub>D</sub>](#)

存储溶液	pH: 7.2 Preservative: 0.05% Sodium azide Constituents: 40% Glycerol (glycerin, glycerine), 9.85% Tris glycine, 50% Tissue culture supernatant
纯度	Protein A purified
克隆	单克隆
克隆编号	EPR6491(B)
同种型	IgG

## 应用

**The Abpromise guarantee**      **Abpromise™** 承诺保证使用 ab124813 于以下的经测试应用

“应用说明”部分 下显示的仅为推荐的起始稀释度;实际最佳的稀释度/浓度应由使用者检定。

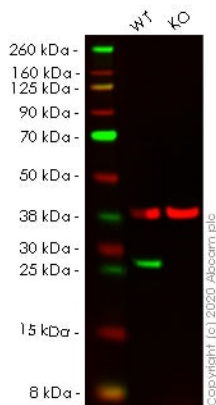
应用	Ab 评论	说明
WB		1/1000 - 1/10000. Detects a band of approximately 24-30 kDa (predicted molecular weight: 30 kDa).
Flow Cyt		1/10 - 1/100. <b>ab172730</b> - Rabbit monoclonal IgG, is suitable for use as an isotype control with this antibody.

**应用说明**      Is unsuitable for ICC/IF, IHC-P or IP.

## 靶标

功能	Catalyzes the O-methylation, and thereby the inactivation, of catecholamine neurotransmitters and catechol hormones. Also shortens the biological half-lives of certain neuroactive drugs, like L-DOPA, alpha-methyl DOPA and isoproterenol.
组织特异性	Brain, liver, placenta, lymphocytes and erythrocytes.
序列相似性	Belongs to the mammalian catechol-O-methyltransferase family.
翻译后修饰	The N-terminus is blocked.
细胞定位	Cytoplasm and Cell membrane.

## 图片



Western blot - Anti-COMT antibody [EPR6491(B)]  
(ab124813)

**All lanes :** Anti-COMT antibody [EPR6491(B)] (ab124813) at 1/1000 dilution

**Lane 1 :** Wild-type HEK-293T cell lysate

**Lane 2 :** COMT knockout HEK-293T cell lysate

Lysates/proteins at 20 µg per lane.

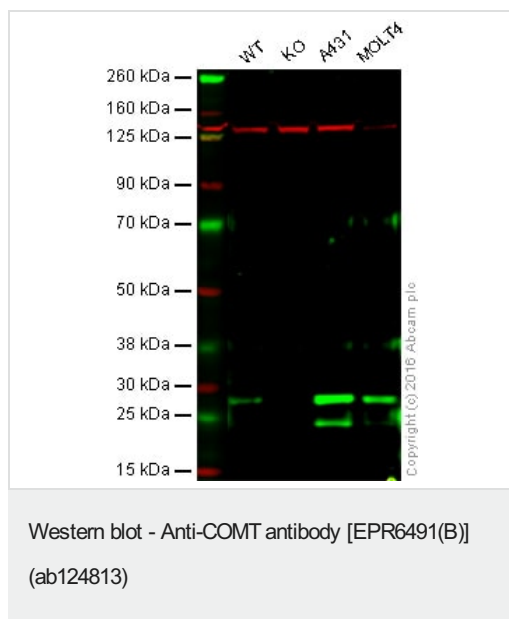
Performed under reducing conditions.

**Predicted band size:** 30 kDa

**Observed band size:** 28 kDa

**Lanes 1-2:** Merged signal (red and green). Green - ab124813 observed at 28 kDa. Red - loading control [ab8245](#) observed at 37 kDa.

ab124813 Anti-COMT antibody [EPR6491(B)] was shown to specifically react with COMT in wild-type HEK-293T cells. Loss of signal was observed when knockout cell line [ab266537](#) (knockout cell lysate [ab257396](#)) was used. Wild-type and COMT knockout samples were subjected to SDS-PAGE. ab124813 and Anti-GAPDH antibody [6C5] - Loading Control ([ab8245](#)) were incubated overnight at 4°C at 1 in 1000 Dilution and 1 in 20000 dilution respectively. Blots were developed with Goat anti-Rabbit IgG H&L (IRDye® 800CW) preadsorbed ([ab216773](#)) and Goat anti-Mouse IgG H&L (IRDye® 680RD) preadsorbed ([ab216776](#)) secondary antibodies at 1 in 20000 dilution for 1 hour at room temperature before imaging.



**All lanes :** Anti-COMT antibody [EPR6491(B)] (ab124813) at 1/1000 dilution

**Lane 1 :** Wild-type HAP1 whole cell lysate

**Lane 2 :** COMT knockout HAP1 whole cell lysate

**Lane 3 :** A431 whole cell lysate

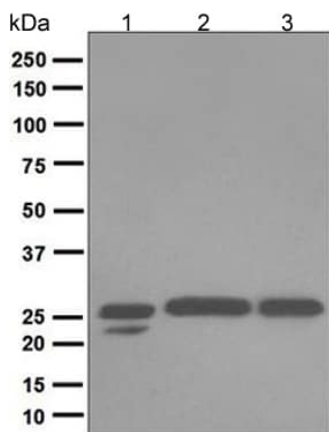
**Lane 4 :** MOLT4 whole cell lysate

Lysates/proteins at 20 µg per lane.

**Predicted band size:** 30 kDa

**Lanes 1 -4:** Merged signal (red and green). Green - ab124813 observed at 28 kDa. Red - loading control, **ab18058**, observed at 130 kDa.

ab124813 was shown to recognize COMT when COMT knockout samples were used, along with additional cross-reactive bands. Wild-type and COMT knockout samples were subjected to SDS-PAGE. Ab124813 and **ab18058** (Mouse anti Vinculin loading control) were incubated overnight at 4°C at 1/1000 dilution and 1/10000 dilution respectively. Blots were developed with 800CW Goat anti Rabbit and 680CW Goat anti Mouse secondary antibodies at 1/10000 dilution for 1 hour at room temperature before imaging.



Western blot - Anti-COMT antibody [EPR6491(B)]  
(ab124813)

**All lanes :** Anti-COMT antibody [EPR6491(B)] (ab124813) at  
1/1000 dilution

**Lane 1 :** Human fetal liver lysate

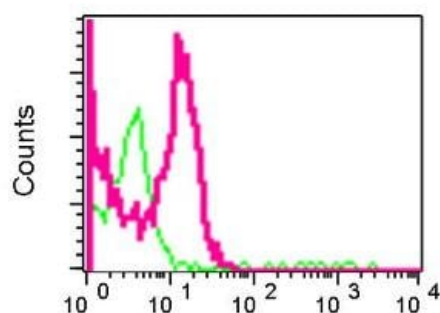
**Lane 2 :** A431 cell lysate

**Lane 3 :** MOLT4 cell lysate

Lysates/proteins at 10 µg per lane.

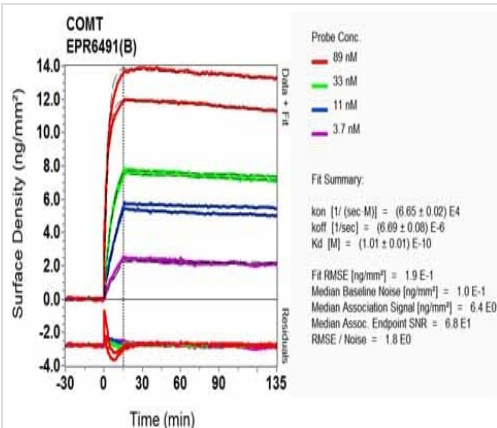
Developed using the ECL technique.

**Predicted band size:** 30 kDa



Flow Cytometry - Anti-COMT antibody [EPR6491(B)]  
(ab124813)

ab124813, at 1/10 dilution staining COMT in A431 cells, (Red)  
compared to a nonspecific negative control antibody (Green) by  
Flow Cytometry.



OIR-D Scanning - Anti-COMT antibody  
[EPR6491(B)] (ab124813)

Equilibrium disassociation constant ( $K_D$ )

Learn more about  $K_D$

[Click here to learn more about  \$K\_D\$](#)

### Why choose a recombinant antibody?



**Research with confidence**  
Consistent and reproducible results



**Long-term and scalable supply**  
Recombinant technology



**Success from the first experiment**  
Confirmed specificity



**Ethical standards compliant**  
Animal-free production

Anti-COMT antibody [EPR6491(B)] (ab124813)

**Please note:** All products are "FOR RESEARCH USE ONLY. NOT FOR USE IN DIAGNOSTIC PROCEDURES"

### Our Abpromise to you: Quality guaranteed and expert technical support

---

- Replacement or refund for products not performing as stated on the datasheet
- Valid for 12 months from date of delivery
- Response to your inquiry within 24 hours
- We provide support in Chinese, English, French, German, Japanese and Spanish
- Extensive multi-media technical resources to help you
- We investigate all quality concerns to ensure our products perform to the highest standards

If the product does not perform as described on this datasheet, we will offer a refund or replacement. For full details of the Abpromise, please visit <https://www.abcam.cn/abpromise> or contact our technical team.

### Terms and conditions

---

- Guarantee only valid for products bought direct from Abcam or one of our authorized distributors