

Anti-Coilin antibody [Pdelta] ab11822

★★★★★ [1 Abreviews](#) [39 References](#) [1 图像](#)

概述

产品名称	Anti-Coilin抗体[Pdelta]
描述	小鼠单克隆抗体[Pdelta] to Coilin
宿主	Mouse
经测试应用	适用于: WB, ICC/IF
种属反应性	与反应: Mouse, Human
免疫原	Recombinant fragment corresponding to Human Coilin (C terminal).
表位	Monoclonal Anti-coilin reacts with an epitope located between amino acids 363 and 481 of human coilin.
阳性对照	HeLa nuclear extract.
常规说明	<p>The Life Science industry has been in the grips of a reproducibility crisis for a number of years. Abcam is leading the way in addressing this with our range of recombinant monoclonal antibodies and knockout edited cell lines for gold-standard validation. Please check that this product meets your needs before purchasing.</p> <p>If you have any questions, special requirements or concerns, please send us an inquiry and/or contact our Support team ahead of purchase. Recommended alternatives for this product can be found below, along with publications, customer reviews and Q&As</p>

性能

形式	Liquid
存放说明	Shipped at 4°C. Upon delivery aliquot and store at -20°C. Avoid freeze / thaw cycles.
存储溶液	<p>pH: 7.40</p> <p>Preservative: 0.097% Sodium azide</p> <p>Constituent: 0.0268% PBS</p>
纯度	Protein A purified
克隆	单克隆
克隆编号	Pdelta
同种型	IgG1

The Abpromise guarantee

Abpromise™承诺保证使用ab11822于以下的经测试应用

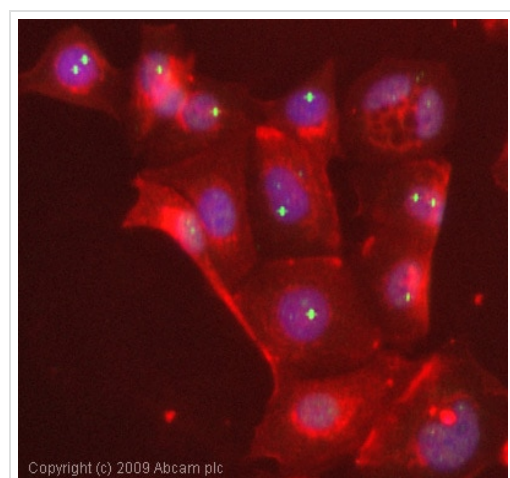
“应用说明”部分 下显示的仅为推荐的起始稀释度;实际最佳的稀释度/浓度应由使用者检定。

应用	Ab评论	说明
WB		Use at an assay dependent concentration.
ICC/IF	★★★★★ (1)	Use a concentration of 1 µg/ml.

靶标

功能	Is a component of the nuclear coiled bodies (CBS) which are involved in the function or assembly/disassembly of nucleoplasmic snRNPs. During mitosis, CBS disassemble, coinciding with a mitotic-specific phosphorylation of p80 coilin.
组织特异性	Found in all the cell types examined.
序列相似性	Belongs to the coilin family.
细胞定位	Nucleus. Nuclear coiled body located in the interchromatin space between the nucleolus and the nucleus.

图片



Copyright (c) 2009 Abcam plc

Immunocytochemistry/ Immunofluorescence - Anti-Coilin antibody [Pdelta] (ab11822)

ICC/IF image of ab11822 stained MCF-7 cells. The cells were 4% formaldehyde fixed (10 min) and then incubated in 1%BSA / 10% normal goat serum / 0.3M glycine in 0.1% PBS-Tween for 1h to permeabilise the cells and block non-specific protein-protein interactions. The cells were then incubated with the antibody (ab11822, 1µg/ml) overnight at +4°C. The secondary antibody (green) was Alexa Fluor® 488 goat anti-mouse IgG (H+L) used at a 1/1000 dilution for 1h. Alexa Fluor® 594 WGA was used to label plasma membranes (red) at a 1/200 dilution for 1h. DAPI was used to stain the cell nuclei (blue) at a concentration of 1.43µM.

Please note: All products are "FOR RESEARCH USE ONLY. NOT FOR USE IN DIAGNOSTIC PROCEDURES"

Our Abpromise to you: Quality guaranteed and expert technical support

- Replacement or refund for products not performing as stated on the datasheet
- Valid for 12 months from date of delivery

- Response to your inquiry within 24 hours
- We provide support in Chinese, English, French, German, Japanese and Spanish
- Extensive multi-media technical resources to help you
- We investigate all quality concerns to ensure our products perform to the highest standards

If the product does not perform as described on this datasheet, we will offer a refund or replacement. For full details of the Abpromise, please visit <https://www.abcam.cn/abpromise> or contact our technical team.

Terms and conditions

- Guarantee only valid for products bought direct from Abcam or one of our authorized distributors