


### Anti-Coatomer subunit delta/COPD antibody ab96725

★★★★★ [1 Abreviews](#) [4 References](#) [5 图像](#)

#### 概述

产品名称	Anti-Coatomer subunit delta/COPD抗体
描述	兔多克隆抗体to Coatomer subunit delta/COPD
宿主	Rabbit
经测试应用	适用于: WB, ICC/IF, IHC-P, IHC-Fr
种属反应性	与反应: Mouse, Human 预测可用于: Rat 
免疫原	Recombinant fragment corresponding to Human Coatomer subunit delta/COPD aa 89-492. Database link: <a href="#">NP_001646</a>
阳性对照	WB: 293T, A431, H1299, HeLaS3, HepG2 and Raji cell lysates. ICC/IF: HeLa cells. IHC-P: Mouse brain tissue. IHC-Fr: Mouse cerebellum tissue.
常规说明	<p>The Life Science industry has been in the grips of a reproducibility crisis for a number of years. Abcam is leading the way in addressing this with our range of recombinant monoclonal antibodies and knockout edited cell lines for gold-standard validation. Please check that this product meets your needs before purchasing.</p> <p>If you have any questions, special requirements or concerns, please send us an inquiry and/or contact our Support team ahead of purchase. Recommended alternatives for this product can be found below, along with publications, customer reviews and Q&amp;As</p>

#### 性能

形式	Liquid
存放说明	Shipped at 4°C. Upon delivery aliquot and store at -20°C or -80°C. Avoid repeated freeze / thaw cycles.
存储溶液	pH: 7.00 Preservative: 0.01% Thimerosal (merthiolate) Constituents: 1.21% Tris, 0.75% Glycine, 20% Glycerol (glycerin, glycerine)
纯度	Immunogen affinity purified
克隆	多克隆
同种型	IgG

应用

**The Abpromise guarantee**      **Abpromise™**承诺保证使用ab96725于以下的经测试应用

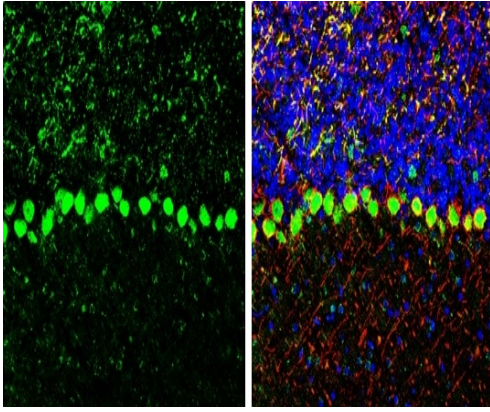
“应用说明”部分 下显示的仅为推荐的起始稀释度;实际最佳的稀释度/浓度应由使用者检定。

应用	Ab评论	说明
WB	★★★★★ (1)	1/500 - 1/3000. Predicted molecular weight: 58 kDa.
ICC/IF		1/100 - 1/500.
IHC-P		1/100 - 1/1000. Perform heat mediated antigen retrieval with citrate buffer pH 6 before commencing with IHC staining protocol.
IHC-Fr		1/100 - 1/1000. Antigen Retrieval: Citrate buffer, pH 6.0, 10 min.

靶标

功能	The coatomer is a cytosolic protein complex that binds to dilysine motifs and reversibly associates with Golgi non-clathrin-coated vesicles, which further mediate biosynthetic protein transport from the ER, via the Golgi up to the trans Golgi network. Coatomer complex is required for budding from Golgi membranes, and is essential for the retrograde Golgi-to-ER transport of dilysine-tagged proteins. In mammals, the coatomer can only be recruited by membranes associated to ADP-ribosylation factors (ARFs), which are small GTP-binding proteins; the complex also influences the Golgi structural integrity, as well as the processing, activity, and endocytic recycling of LDL receptors.
组织特异性	Ubiquitously expressed.
序列相似性	Belongs to the adaptor complexes medium subunit family. Delta-COP subfamily. Contains 1 MHD (mu homology) domain.
细胞定位	Cytoplasm. Golgi apparatus membrane. Cytoplasmic vesicle > COPI-coated vesicle membrane. The coatomer is cytoplasmic or polymerized on the cytoplasmic side of the Golgi, as well as on the vesicles/buds originating from it.

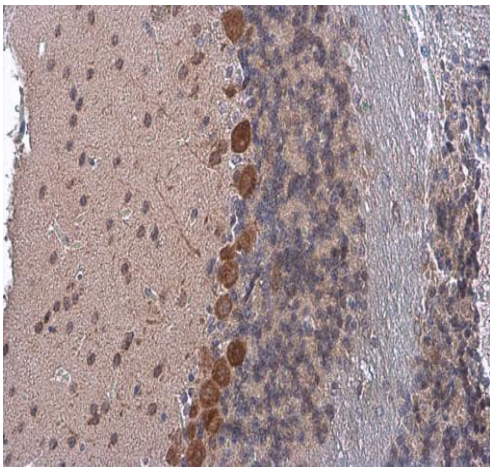
图片



Immunohistochemistry (Frozen sections) - Anti-Coatomer subunit delta/COPD antibody (ab96725)

Frozen section of mouse cerebellum tissue stained for Coatomer subunit delta/COPD using ab96725 at 1/250 dilution (green). The nuclear counter stain is DAPI (blue). NF-H is detected with an anti NF-H antibody (red).

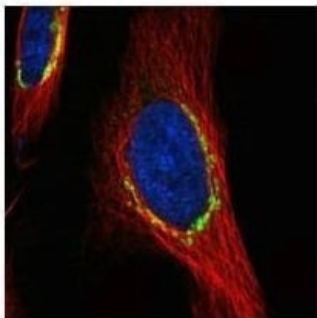
Antigen Retrieval: Citrate buffer, pH 6.0, 10 min.



Immunohistochemistry (Formalin/PFA-fixed paraffin-embedded sections) - Anti-Coatomer subunit delta/COPD antibody (ab96725)

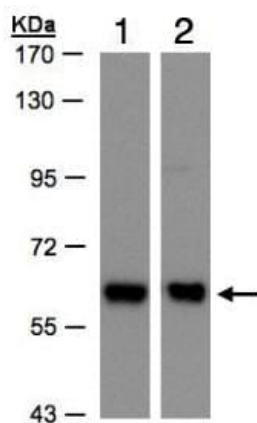
Paraffin-embedded mouse brain tissue stained for Coatomer subunit delta/COPD using ab96725 at 1/500 dilution in immunohistochemical analysis.

Antigen Retrieval: Citrate buffer, pH 6.0, 10 min.



Immunocytochemistry/ Immunofluorescence - Anti-Coatomer subunit delta/COPD antibody (ab96725)

Paraformaldehyde-fixed HeLa cells stained for Coatomer subunit delta/COPD using ab96725 at 1/500 dilution (green) in ICC/IF. Alpha tubulin filaments are detected with an anti-tubulin antibody (red).



Western blot - Anti-Coatomer subunit delta/COPD antibody (ab96725)

**All lanes :** Anti-Coatomer subunit delta/COPD antibody (ab96725)  
at 1/500 dilution

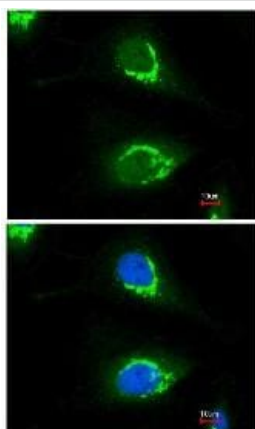
**Lane 1 :** H1299 whole cell lysate

**Lane 2 :** HepG2 whole cell lysate

Lysates/proteins at 30 µg per lane.

**Predicted band size:** 58 kDa

7.5% SDS PAGE



Immunocytochemistry/ Immunofluorescence - Anti-Coatomer subunit delta/COPD antibody (ab96725)

Immunofluorescence analysis of paraformaldehyde-fixed HeLa cells, using ab96725 at 1/200 dilution. Lower image merged with DNA probe.

**Please note:** All products are "FOR RESEARCH USE ONLY. NOT FOR USE IN DIAGNOSTIC PROCEDURES"

### Our Abpromise to you: Quality guaranteed and expert technical support

- Replacement or refund for products not performing as stated on the datasheet
- Valid for 12 months from date of delivery
- Response to your inquiry within 24 hours
- We provide support in Chinese, English, French, German, Japanese and Spanish
- Extensive multi-media technical resources to help you
- We investigate all quality concerns to ensure our products perform to the highest standards

If the product does not perform as described on this datasheet, we will offer a refund or replacement. For full details of the Abpromise,

please visit <https://www.abcam.cn/abpromise> or contact our technical team.

## **Terms and conditions**

---

- Guarantee only valid for products bought direct from Abcam or one of our authorized distributors