


Anti-Clusterin antibody ab69644

★★★★★ [2 Abreviews](#) [10 References](#) [3 图像](#)

概述

产品名称	Anti-Clusterin抗体
描述	兔多克隆抗体to Clusterin
宿主	Rabbit
经测试应用	适用于: WB, IHC-P, ICC/IF
种属反应性	与反应: Human 预测可用于: Mouse, Rat 
免疫原	Synthetic peptide corresponding to Human Clusterin (C terminal).
阳性对照	HeLa and A549 cell extracts, HeLa cells and human brain tissue.
常规说明	<p>The Life Science industry has been in the grips of a reproducibility crisis for a number of years. Abcam is leading the way in addressing this with our range of recombinant monoclonal antibodies and knockout edited cell lines for gold-standard validation. Please check that this product meets your needs before purchasing.</p> <p>If you have any questions, special requirements or concerns, please send us an inquiry and/or contact our Support team ahead of purchase. Recommended alternatives for this product can be found below, along with publications, customer reviews and Q&As</p>

性能

形式	Liquid
存放说明	Shipped at 4°C. Upon delivery aliquot and store at -20°C. Avoid freeze / thaw cycles.
存储溶液	pH: 7.40 Preservative: 0.02% Sodium azide Constituents: 50% Glycerol, 0.87% Sodium chloride, PBS
纯度	Without Mg ²⁺ and Ca ²⁺
克隆	Immunogen affinity purified
同种型	多克隆 IgG

应用

The Abpromise guarantee

Abpromise™ 承诺保证使用ab69644于以下的经测试应用

“应用说明”部分下显示的仅为推荐的起始稀释度;实际最佳的稀释度/浓度应由使用者检定。

应用	Ab评论	说明
WB		1/500 - 1/1000. Detects a band of approximately 52 kDa (predicted molecular weight: 52 kDa).
IHC-P	★★★★★ (2)	1/50 - 1/100.
ICC/IF		1/500 - 1/1000.

靶标

功能

Isoform 1 functions as extracellular chaperone that prevents aggregation of nonnative proteins. Prevents stress-induced aggregation of blood plasma proteins. Inhibits formation of amyloid fibrils by APP, APOC2, B2M, CALCA, CSN3, SNCA and aggregation-prone LYZ variants (in vitro). Does not require ATP. Maintains partially unfolded proteins in a state appropriate for subsequent refolding by other chaperones, such as HSPA8/HSC70. Does not refold proteins by itself. Binding to cell surface receptors triggers internalization of the chaperone-client complex and subsequent lysosomal or proteasomal degradation. Secreted isoform 1 protects cells against apoptosis and against cytolysis by complement. Intracellular isoforms interact with ubiquitin and SCF (SKP1-CUL1-F-box protein) E3 ubiquitin-protein ligase complexes and promote the ubiquitination and subsequent proteasomal degradation of target proteins. Promotes proteasomal degradation of COMMD1 and IKBKB. Modulates NF-kappa-B transcriptional activity. Nuclear isoforms promote apoptosis. Mitochondrial isoforms suppress BAX-dependent release of cytochrome c into the cytoplasm and inhibit apoptosis. Plays a role in the regulation of cell proliferation.

组织特异性

Detected in blood plasma, cerebrospinal fluid, milk, seminal plasma and colon mucosa. Detected in the germinal center of colon lymphoid nodules and in colon parasympathetic ganglia of the Auerbach plexus (at protein level). Ubiquitous. Detected in brain, testis, ovary, liver and pancreas, and at lower levels in kidney, heart, spleen and lung.

序列相似性

Belongs to the clusterin family.

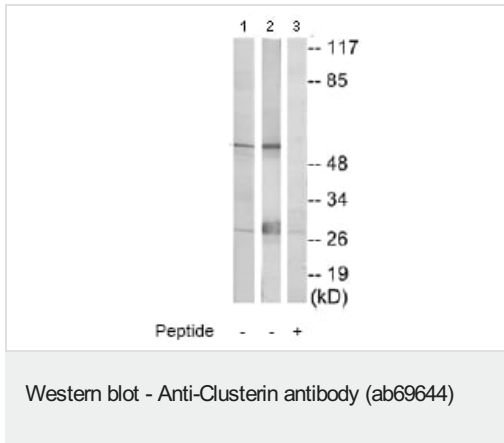
翻译后修饰

Isoform 1 is proteolytically cleaved on its way through the secretory system, probably within the Golgi lumen.
Polyubiquitinated, leading to proteasomal degradation.
Heavily N-glycosylated. About 30% of the protein mass is comprised of complex N-linked carbohydrate.

细胞定位

Secreted. Can retrotranslocate from the secretory compartments to the cytosol upon cellular stress and Nucleus. Cytoplasm. Mitochondrion membrane. Cytoplasm, cytosol. Microsome. Endoplasmic reticulum. Cytoplasmic vesicle, secretory vesicle, chromaffin granule. Isoforms lacking the N-terminal signal sequence have been shown to be cytoplasmic and/or nuclear. Secreted isoforms can retrotranslocate from the secretory compartments to the cytosol upon cellular stress. Detected in perinuclear foci that may be aggresomes containing misfolded, ubiquitinated proteins. Detected at the mitochondrion membrane upon induction of apoptosis.

图片



All lanes : Anti-Clusterin antibody (ab69644) at 1/500 dilution

Lane 1 : HeLa cell extracts

Lane 2 : A549 extracts

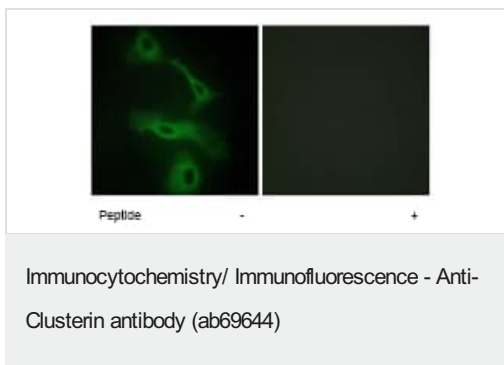
Lane 3 : A549 extracts with immunising peptide at 10 µg

Lysates/proteins at 30 µg per lane.

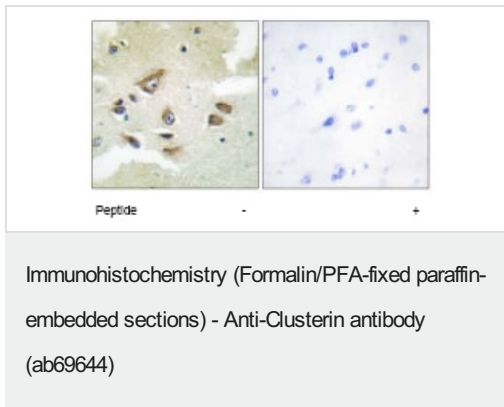
Predicted band size: 52 kDa

Observed band size: 52 kDa

Additional bands at: 28 kDa. We are unsure as to the identity of these extra bands.



ab69644 at 1/500 dilution staining Apolipoprotein J in HeLa cells by Immunofluorescence, in the absence or presence of the immunising peptide.



ab69644 at 1/50 dilution staining Apolipoprotein J in human brain by Immunohistochemistry, Paraffin-embedded tissue, in the absence or presence of the immunising peptide.

Please note: All products are "FOR RESEARCH USE ONLY. NOT FOR USE IN DIAGNOSTIC PROCEDURES"

Our Promise to you: Quality guaranteed and expert technical support

- Replacement or refund for products not performing as stated on the datasheet
- Valid for 12 months from date of delivery
- Response to your inquiry within 24 hours
- We provide support in Chinese, English, French, German, Japanese and Spanish
- Extensive multi-media technical resources to help you

- We investigate all quality concerns to ensure our products perform to the highest standards

If the product does not perform as described on this datasheet, we will offer a refund or replacement. For full details of the Abpromise, please visit <https://www.abcam.cn/abpromise> or contact our technical team.

Terms and conditions

- Guarantee only valid for products bought direct from Abcam or one of our authorized distributors