

### Anti-CLPP antibody [EPR7133] ab124822

**重组** RabMAb

★★★★★ **3 Abreviews** **36 References** **7 图像**

#### 概述

产品名称	Anti-CLPP抗体[EPR7133]
描述	兔单克隆抗体[EPR7133] to CLPP
宿主	Rabbit
经测试应用	<b>适用于:</b> IHC-P, WB, IP <b>不适用于:</b> Flow Cyt
种属反应性	<b>与反应:</b> Mouse, Rat, Human
免疫原	Synthetic peptide corresponding to Human CLPP.
阳性对照	WB: Recombinant Human CLPP protein ( <b>ab124872</b> ), Fetal muscle, Saos-2, A431, 293T, K562, A549, and Mouse brain lysates; IHC-P: Human liver, Mouse kidney, and Rat stomach tissues IP: K562
常规说明	This product is a recombinant monoclonal antibody, which offers several advantages including: <ul style="list-style-type: none"> <li>- High batch-to-batch consistency and reproducibility</li> <li>- Improved sensitivity and specificity</li> <li>- Long-term security of supply</li> <li>- Animal-free production</li> </ul> For more information <b><a href="#">see here</a></b> . Our RabMAb <sup>®</sup> technology is a patented hybridoma-based technology for making rabbit monoclonal antibodies. For details on our patents, please refer to <b><a href="#">RabMAb<sup>®</sup> patents</a></b> .

#### 性能

形式	Liquid
存放说明	Shipped at 4°C. Store at +4°C short term (1-2 weeks). Upon delivery aliquot. Store at -20°C long term. Avoid freeze / thaw cycle.
存储溶液	pH: 7.20 Preservative: 0.01% Sodium azide Constituents: 59% PBS, 40% Glycerol (glycerin, glycerine), 0.5% BSA
纯度	Protein A purified
克隆	单克隆
克隆编号	EPR7133

同种型

lgG

应用

The Abpromise guarantee

Abpromise™承诺保证使用ab124822于以下的经测试应用

“应用说明”部分 下显示的仅为推荐的起始稀释度;实际最佳的稀释度/浓度应由使用者检定。

应用	Ab评论	说明
IHC-P		1/50. Perform heat mediated antigen retrieval with citrate buffer pH 6 before commencing with IHC staining protocol. See <a href="#">IHC antigen retrieval protocols</a> .
WB	★★★★★ (3)	1/1000 - 1/10000. Detects a band of approximately 26 kDa (predicted molecular weight: 30 kDa).
IP		1/10 - 1/100.

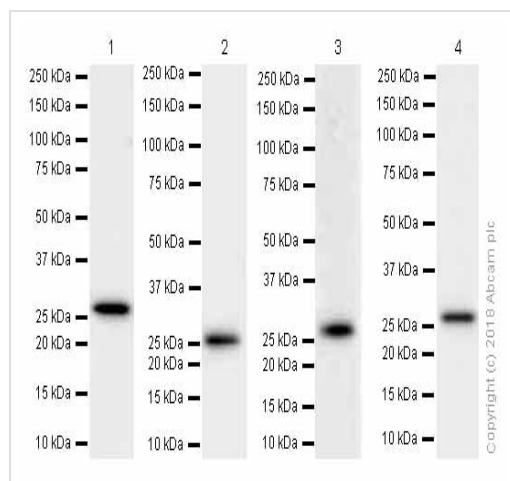
应用说明

Is unsuitable for Flow Cyt.

靶标

功能	Clp cleaves peptides in various proteins in a process that requires ATP hydrolysis. Clp may be responsible for a fairly general and central housekeeping function rather than for the degradation of specific substrates.
组织特异性	Predominantly expressed in skeletal muscle. Intermediate levels in heart, liver and pancreas. Low in brain, placenta, lung and kidney.
序列相似性	Belongs to the peptidase S14 family.
细胞定位	Mitochondrion matrix.

图片



Western blot - Anti-CLPP antibody [EPR7133]  
(ab124822)

**All lanes :** Anti-CLPP antibody [EPR7133] (ab124822) at 0.05 µg/ml (purified)

**Lane 1 :** 293T (Human embryonic kidney epithelial cell) whole cell lysates

**Lane 2 :** A549 (Human lung carcinoma epithelial cell) whole cell lysate

**Lane 3 :** Mouse brain lysates

**Lane 4 :** Rat brain lysates

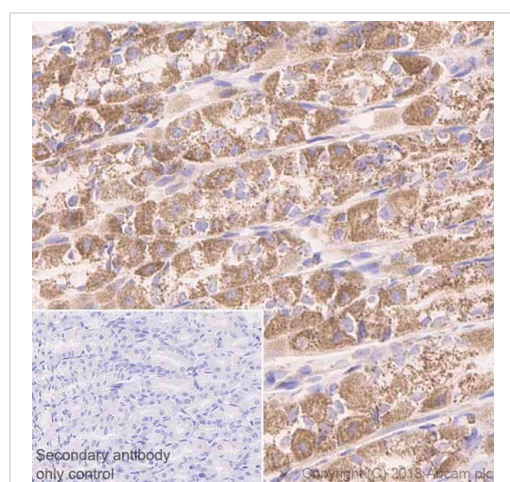
Lysates/proteins at 15 µg per lane.

### Secondary

**All lanes :** Goat Anti-Rabbit IgG H&L (HRP) (**ab97051**) at 1/20000 dilution

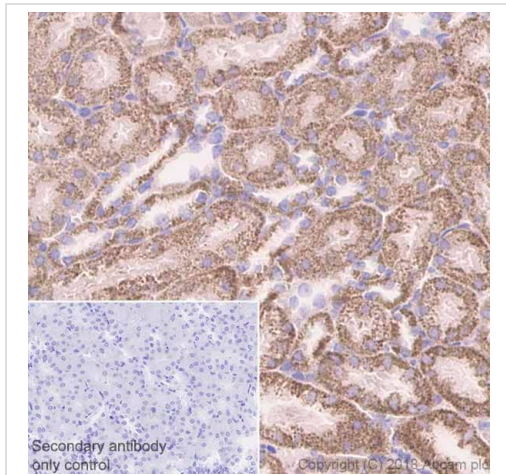
**Predicted band size:** 30 kDa

Blocking and diluting buffer: 5% NFDM/TBST



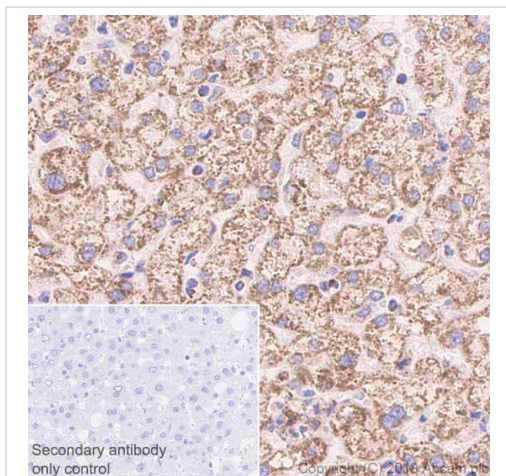
Immunohistochemistry (Formalin/PFA-fixed paraffin-embedded sections) - Anti-CLPP antibody  
[EPR7133] (ab124822)

Immunohistochemistry (Formalin/PFA-fixed paraffin-embedded sections) analysis of Rat stomach tissue sections labeling CLPP with Purified ab124822 at 1:50 dilution (2 µg/ml). Heat mediated antigen retrieval was performed using **ab93684** (Tris/EDTA buffer, pH 9.0). ImmunoHistoProbe one step HRP Polymer (ready to use) was used as the secondary antibody. Negative control: PBS instead of the primary antibody. Hematoxylin was used as a counterstain.



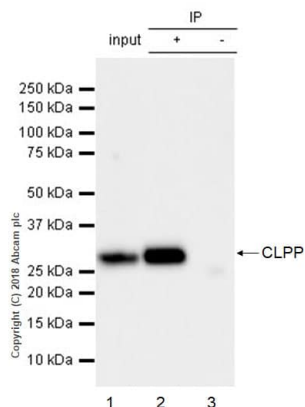
Immunohistochemistry (Formalin/PFA-fixed paraffin-embedded sections) - Anti-CLPP antibody  
[EPR7133] (ab124822)

Immunohistochemistry (Formalin/PFA-fixed paraffin-embedded sections) analysis of Mouse kidney tissue sections labeling CLPP with Purified ab124822 at 1:50 dilution (2 µg/ml). Heat mediated antigen retrieval was performed using [ab93684](#) (Tris/EDTA buffer, pH 9.0). ImmunoHistoProbe one step HRP Polymer (ready to use) was used as the secondary antibody. Negative control: PBS instead of the primary antibody. Hematoxylin was used as a counterstain.



Immunohistochemistry (Formalin/PFA-fixed paraffin-embedded sections) - Anti-CLPP antibody  
[EPR7133] (ab124822)

Immunohistochemistry (Formalin/PFA-fixed paraffin-embedded sections) analysis of Human liver tissue sections labeling CLPP with Purified ab124822 at 1:50 dilution (2 µg/ml). Heat mediated antigen retrieval was performed using [ab93684](#) (Tris/EDTA buffer, pH 9.0). ImmunoHistoProbe one step HRP Polymer (ready to use) was used as the secondary antibody. Negative control: PBS instead of the primary antibody. Hematoxylin was used as a counterstain.



Immunoprecipitation - Anti-CLPP antibody  
[EPR7133] (ab124822)

ab124822 (purified) at 1:20 dilution (2µg) immunoprecipitating CLPP in K562 whole cell lysate.

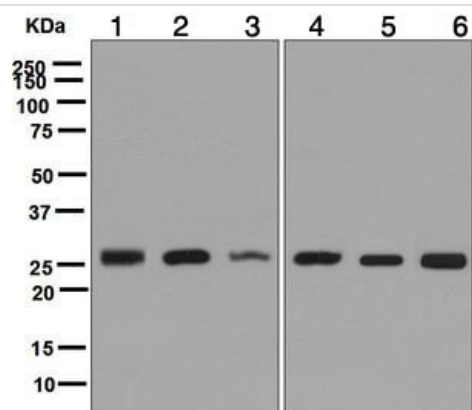
Lane 1 (input): K562 (Human chronic myelogenous leukemia lymphoblast) whole cell lysate 10µg

Lane 2 (+): ab124822 & K562 whole cell lysate

Lane 3 (-): Rabbit monoclonal IgG (**ab172730**) instead of ab124822 in K562 whole cell lysate

For western blotting, VeriBlot for IP Detection Reagent (HRP) (**ab131366**) was used for detection at 1:5000 dilution.

Blocking and diluting buffer: 5% NFDM/TBST.



Western blot - Anti-CLPP antibody [EPR7133]  
(ab124822)

**All lanes** : Anti-CLPP antibody [EPR7133] (ab124822) at 1/1000 dilution (unpurified)

**Lane 1** : Fetal muscle lysate

**Lane 2** : Saos-2 (Human osteosarcoma cell line) cell lysate

**Lane 3** : A431 (Human epidermoid carcinoma cell line) cell lysate

**Lane 4** : HEK-293T (human epithelial cell line from embryonic kidney transformed with large T antigen) cell lysate

**Lane 5** : K562 cell lysate

**Lane 6** : A549 (Human lung carcinoma cell line) cell lysate

Lysates/proteins at 10 µg per lane.

## Secondary

**All lanes** : HRP labelled goat anti-rabbit at 1/2000 dilution

**Predicted band size:** 30 kDa

**Observed band size:** 26 kDa

### Why choose a recombinant antibody?



**Research with confidence**  
Consistent and reproducible results



**Long-term and scalable supply**  
Recombinant technology



**Success from the first experiment**  
Confirmed specificity



**Ethical standards compliant**  
Animal-free production

Anti-CLPP antibody [EPR7133] (ab124822)

**Please note:** All products are "FOR RESEARCH USE ONLY. NOT FOR USE IN DIAGNOSTIC PROCEDURES"

### Our Abpromise to you: Quality guaranteed and expert technical support

---

- Replacement or refund for products not performing as stated on the datasheet
- Valid for 12 months from date of delivery
- Response to your inquiry within 24 hours
- We provide support in Chinese, English, French, German, Japanese and Spanish
- Extensive multi-media technical resources to help you
- We investigate all quality concerns to ensure our products perform to the highest standards

If the product does not perform as described on this datasheet, we will offer a refund or replacement. For full details of the Abpromise, please visit <https://www.abcam.cn/abpromise> or contact our technical team.

### Terms and conditions

---

- Guarantee only valid for products bought direct from Abcam or one of our authorized distributors