

### Anti-CLK1 antibody ab74044

★★★★☆ [2 Abreviews](#) [5 References](#) [2 图像](#)

#### 概述

产品名称	Anti-CLK1抗体
描述	兔多克隆抗体to CLK1
宿主	Rabbit
经测试应用	适用于: WB, ICC/IF
种属反应性	与反应: Human 预测可用于: Mouse 
免疫原	A synthesized peptide derived from the internal region of human CLK1.
阳性对照	HUVEC cells and extracts from 293 cells.
常规说明	<p>The Life Science industry has been in the grips of a reproducibility crisis for a number of years. Abcam is leading the way in addressing this with our range of recombinant monoclonal antibodies and knockout edited cell lines for gold-standard validation. Please check that this product meets your needs before purchasing.</p> <p>If you have any questions, special requirements or concerns, please send us an inquiry and/or contact our Support team ahead of purchase. Recommended alternatives for this product can be found below, along with publications, customer reviews and Q&amp;As</p>

#### 性能

形式	Liquid
存放说明	Shipped at 4°C. Upon delivery aliquot and store at -20°C. Avoid freeze / thaw cycles.
存储溶液	<p>pH: 7.40</p> <p>Preservative: 0.02% Sodium azide</p> <p>Constituents: 0.87% Sodium chloride, 50% Glycerol, PBS</p>
纯度	Without Mg <sup>2+</sup> and Ca <sup>2+</sup>
纯化说明	Immunogen affinity purified
克隆	多克隆
同种型	IgG

## 应用

### The Abpromise guarantee

**Abpromise™** 承诺保证使用 ab74044 于以下的经测试应用

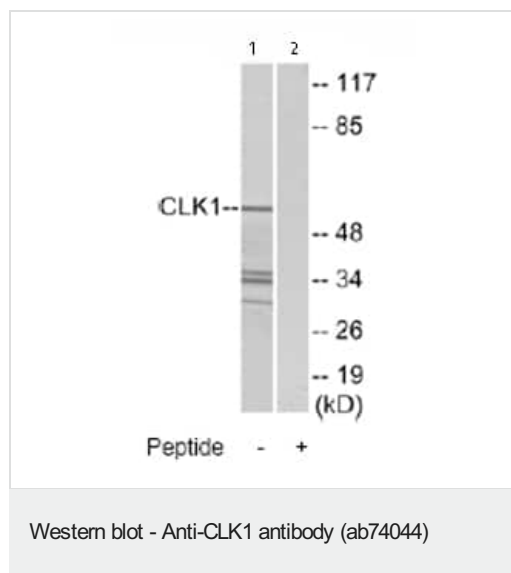
“应用说明”部分 下显示的仅为推荐的起始稀释度;实际最佳的稀释度/浓度应由使用者检定。

应用	Ab 评论	说明
WB	★★★★☆ (2)	1/500 - 1/1000. Predicted molecular weight: 57 kDa.
ICC/IF		1/500 - 1/1000.

## 靶标

功能	Phosphorylates serine- and arginine-rich (SR) proteins of the spliceosomal complex may be a constituent of a network of regulatory mechanisms that enable SR proteins to control RNA splicing. Phosphorylates serines, threonines and tyrosines.
序列相似性	Belongs to the protein kinase superfamily. CMGC Ser/Thr protein kinase family. Lammer subfamily. Contains 1 protein kinase domain.
翻译后修饰	Autophosphorylates on all three types of residues.
细胞定位	Nucleus.

## 图片



**All lanes :** Anti-CLK1 antibody (ab74044) at 1/500 dilution

**Lane 1 :** Extracts from 293 cells

**Lane 2 :** Extracts from 293 cells with immunizing peptide at 5 µg

Lysates/proteins at 5 µg per lane.

**Predicted band size:** 57 kDa

**Observed band size:** 57 kDa

**Additional bands at:** 30 kDa, 34 kDa, 36 kDa. We are unsure as to the identity of these extra bands.



Immunofluorescence analysis of CLK1 in HUVEC cells, using ab74044 at a 1/500 dilution.

Left image: untreated.

Right image: treated with immunizing peptide.

**Please note:** All products are "FOR RESEARCH USE ONLY. NOT FOR USE IN DIAGNOSTIC PROCEDURES"

### Our Abpromise to you: Quality guaranteed and expert technical support

- Replacement or refund for products not performing as stated on the datasheet
- Valid for 12 months from date of delivery
- Response to your inquiry within 24 hours
- We provide support in Chinese, English, French, German, Japanese and Spanish
- Extensive multi-media technical resources to help you
- We investigate all quality concerns to ensure our products perform to the highest standards

If the product does not perform as described on this datasheet, we will offer a refund or replacement. For full details of the Abpromise, please visit <https://www.abcam.cn/abpromise> or contact our technical team.

### Terms and conditions

- Guarantee only valid for products bought direct from Abcam or one of our authorized distributors