

Anti-CLIP170 antibody ab106524

3 References 1 图像

概述	
产品名称	Anti-CLIP170抗体
描述	兔多克隆抗体to CLIP170
宿主	Rabbit
经测试应用	适用于: WB
种属反应性	与反应: Rat
免疫原	Synthetic peptide: 17 aa peptide from near the C-terminal of human CLIP170 (NP_002947)
阳性对照	WB: Rat brain tissue lysate.
常规说明	<p>The Life Science industry has been in the grips of a reproducibility crisis for a number of years. Abcam is leading the way in addressing this with our range of recombinant monoclonal antibodies and knockout edited cell lines for gold-standard validation. Please check that this product meets your needs before purchasing.</p> <p>If you have any questions, special requirements or concerns, please send us an inquiry and/or contact our Support team ahead of purchase. Recommended alternatives for this product can be found below, along with publications, customer reviews and Q&As</p>
性能	
形式	Liquid
存放说明	Shipped at 4°C. Store at 4°C (stable for up to 12 months).
存储溶液	pH: 7.2 Preservative: 0.02% Sodium azide Constituent: PBS
纯度	Immunogen affinity purified
克隆	多克隆
同种型	IgG
应用	

The Abpromise guarantee Abpromise™承诺保证使用ab106524于以下的经测试应用

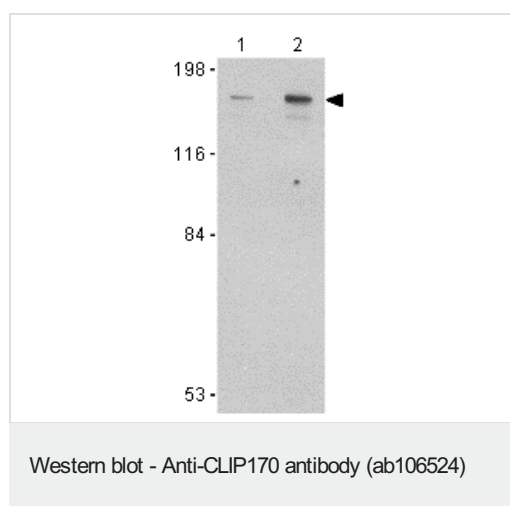
“应用说明”部分 下显示的仅为推荐的起始稀释度;实际最佳的稀释度/浓度应由使用者检定。

应用	Ab评论	说明
WB		Use a concentration of 0.5 - 1 µg/ml. Predicted molecular weight: 162 kDa.

靶标

功能	Seems to be a intermediate filament associated protein that links endocytic vesicles to microtubules.
组织特异性	Highly expressed in the Reed-Sternberg cells of Hodgkin disease.
序列相似性	Contains 2 CAP-Gly domains.
细胞定位	Cytoplasm. Cytoplasm > cytoskeleton. Associated with the cytoskeleton. Localizes to the tips of microtubules.

图片



Lane 1 : Anti-CLIP170 antibody (ab106524) at 0.5 µg/ml

Lane 2 : Anti-CLIP170 antibody (ab106524) at 1 µg/ml

All lanes : rat brain tissue lysate

Predicted band size: 162 kDa

Please note: All products are "FOR RESEARCH USE ONLY. NOT FOR USE IN DIAGNOSTIC PROCEDURES"

Our Abpromise to you: Quality guaranteed and expert technical support

- Replacement or refund for products not performing as stated on the datasheet
- Valid for 12 months from date of delivery
- Response to your inquiry within 24 hours
- We provide support in Chinese, English, French, German, Japanese and Spanish
- Extensive multi-media technical resources to help you
- We investigate all quality concerns to ensure our products perform to the highest standards

If the product does not perform as described on this datasheet, we will offer a refund or replacement. For full details of the Abpromise, please visit <https://www.abcam.cn/abpromise> or contact our technical team.

Terms and conditions

- Guarantee only valid for products bought direct from Abcam or one of our authorized distributors