

# Anti-CLEC4E/MINCLE antibody [AT16E3] ab100846

**2 References**   [4 图像](#)

### 概述

产品名称	Anti-CLEC4E/MINCLE抗体[AT16E3]
描述	小鼠单克隆抗体[AT16E3] to CLEC4E/MINCLE
宿主	Mouse
经测试应用	适用于: IHC-P, WB, ICC/IF, Flow Cyt
种属反应性	与反应: Human
免疫原	Recombinant fragment corresponding to Human CLEC4E/MINCLE aa 41-219. Database link: <a href="#">NP_055173</a>
阳性对照	HeLa cells and HeLa whole cell lysate ( <a href="#">ab150035</a> )
常规说明	<p>This product was changed from ascites to tissue culture supernatant on 08/08/2019. Please note that the dilutions may need to be adjusted accordingly. If you have any questions, please do not hesitate to contact our scientific support team</p> <p>The Life Science industry has been in the grips of a reproducibility crisis for a number of years. Abcam is leading the way in addressing this with our range of recombinant monoclonal antibodies and knockout edited cell lines for gold-standard validation. Please check that this product meets your needs before purchasing.</p> <p>If you have any questions, special requirements or concerns, please send us an inquiry and/or contact our Support team ahead of purchase. Recommended alternatives for this product can be found below, along with publications, customer reviews and Q&amp;As</p>

### 性能

形式	Liquid
存放说明	Shipped at 4°C. Upon delivery aliquot and store at -20°C. Avoid freeze / thaw cycles.
存储溶液	pH: 7.40 Preservative: 0.1% Sodium azide Constituent: PBS
纯度	Tissue culture supernatant
克隆	单克隆
克隆编号	AT16E3
同种型	IgG2b

轻链类型kappa

应用

The Abpromise guarantee Abpromise™承诺保证使用ab100846于以下的经测试应用  
“应用说明”部分 下显示的仅为推荐的起始稀释度;实际最佳的稀释度/浓度应由使用者检定。

应用	Ab评论	说明
IHC-P		Use at an assay dependent concentration.
WB		Use at an assay dependent concentration. Predicted molecular weight: 25 kDa.
ICC/IF		Use at an assay dependent concentration.
Flow Cyt		Use at an assay dependent concentration. <b>ab170192</b> - Mouse monoclonal IgG2b, is suitable for use as an isotype control with this antibody.

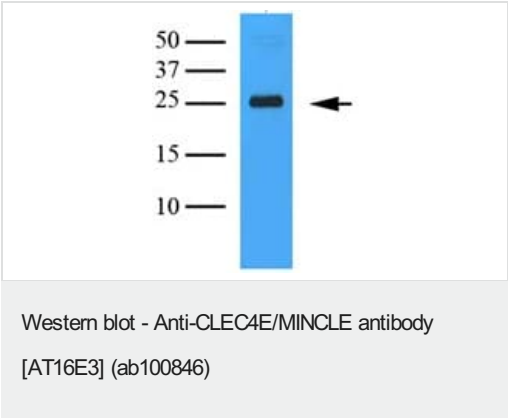
靶标

功能C-type lectin that functions as cell-surface receptor for a wide variety of ligands such as damaged cells, fungi and mycobacteria. Plays a role in the recognition of pathogenic fungi, such as Candida albicans. The detection of mycobacteria is via trehalose 6,6'-dimycolate (TDM), a cell wall glycolipid. Specifically recognizes alpha-mannose residues on pathogenic fungi of the genus Malassezia. Recognizes also SAP130, a nuclear protein, that is released by dead or dying cells. Transduces signals through an ITAM-containing adapter protein, Fc receptor gamma chain /FCER1G. Induces secretion of inflammatory cytokines through a pathway that depends on SYK, CARD9 and NF-kappa-B.

序列相似性Contains 1 C-type lectin domain.

细胞定位Membrane.

图片



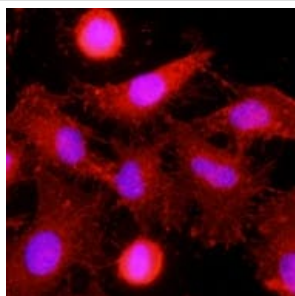
Anti-CLEC4E/MINCLE antibody [AT16E3] (ab100846) at 1/1000 dilution + HeLa Cell Lysate at 35 µg

Secondary  
goat anti-mouse conjugated to HRP

Developed using the ECL technique.

Predicted band size: 25 kDa

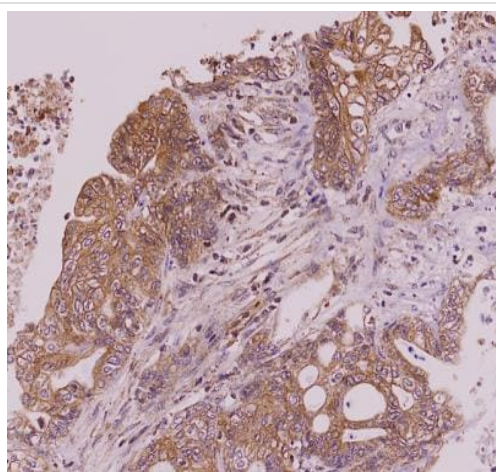
This image was generated using the ascites version of the product.



Immunocytochemistry/ Immunofluorescence - Anti-CLEC4E/MINCLE antibody [AT16E3] (ab100846)

Immunofluorescence of Human HeLa cells stained with ab100846 (1/500) with Texas Red (Red). Nucleus was stained by Hoechst 33342 (Blue).

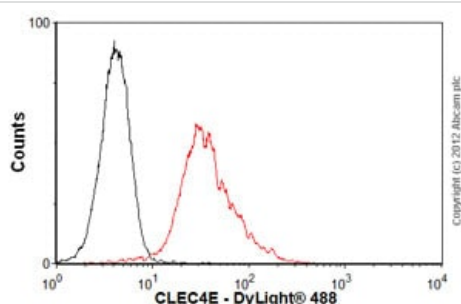
This image was generated using the ascites version of the product.



Immunohistochemistry (Formalin/PFA-fixed paraffin-embedded sections) - Anti-CLEC4E/MINCLE antibody [AT16E3] (ab100846)

ab100846 staining CLEC4E/MINCLE in colorectal cancer tissue by Immunohistochemistry (Formalin/PFA-fixed paraffin-embedded tissue sections). The sections were subjected to antigen retrieval in 0.1M citric acid. The primary antibody was diluted 1/50 and incubated with the sample for 2 hours at room temperature. Antibody was detected by DAB staining.

This image was generated using the ascites version of the product.



Flow Cytometry - Anti-CLEC4E/MINCLE antibody [AT16E3] (ab100846)

Overlay histogram showing HeLa cells stained with ab100846 (red line). The cells were fixed with 80% methanol (5 min) and incubated in 1x PBS / 10% normal goat serum / 0.3M glycine to block non-specific protein-protein interactions. The cells were then incubated with the antibody (ab100846, 1µg/1x10<sup>6</sup> cells) for 30 min at 22°C. The secondary antibody used was DyLight® 488 goat anti-mouse IgG (H+L) (**ab96879**) at 1/500 dilution for 30 min at 22°C. Isotype control antibody (black line) was mouse IgG2b [PLPV219] (**ab91633**, 2µg/1x10<sup>6</sup> cells) used under the same conditions. Acquisition of >5,000 events was performed.

This image was generated using the ascites version of the product.

Please note that Abcam do not have any data for use of this

antibody on non-fixed cells. We welcome any customer feedback.

**Please note:** All products are "FOR RESEARCH USE ONLY. NOT FOR USE IN DIAGNOSTIC PROCEDURES"

### **Our Abpromise to you: Quality guaranteed and expert technical support**

---

- Replacement or refund for products not performing as stated on the datasheet
- Valid for 12 months from date of delivery
- Response to your inquiry within 24 hours
- We provide support in Chinese, English, French, German, Japanese and Spanish
- Extensive multi-media technical resources to help you
- We investigate all quality concerns to ensure our products perform to the highest standards

If the product does not perform as described on this datasheet, we will offer a refund or replacement. For full details of the Abpromise, please visit <https://www.abcam.cn/abpromise> or contact our technical team.

### **Terms and conditions**

---

- Guarantee only valid for products bought direct from Abcam or one of our authorized distributors