

### Anti-CLEC2D antibody ab111105

#### 2 图像

#### 概述

---

产品名称	Anti-CLEC2D抗体
描述	山羊多克隆抗体to CLEC2D
宿主	Goat
经测试应用	适用于: IHC-P
种属反应性	与反应: Human 预测可用于: Cow, Dog 
免疫原	Synthetic peptide, conjugated to KLH corresponding to internal sequence amino acids of Human CLEC2D.
阳性对照	Human placenta and tonsil tissues.
常规说明	<p>The Life Science industry has been in the grips of a reproducibility crisis for a number of years. Abcam is leading the way in addressing this with our range of recombinant monoclonal antibodies and knockout edited cell lines for gold-standard validation. Please check that this product meets your needs before purchasing.</p> <p>If you have any questions, special requirements or concerns, please send us an inquiry and/or contact our Support team ahead of purchase. Recommended alternatives for this product can be found below, along with publications, customer reviews and Q&amp;As</p>

#### 性能

---

形式	Liquid
存放说明	Shipped at 4°C. Upon delivery aliquot and store at -20°C. Avoid freeze / thaw cycles.
存储溶液	pH: 7.30 Preservative: 0.02% Sodium azide Constituents: Tris buffered saline, 0.5% BSA
纯度	Immunogen affinity purified
克隆	多克隆
同种型	IgG

#### 应用

---

## The Abpromise guarantee

**Abpromise™** 承诺保证使用 ab111105 于以下的经测试应用

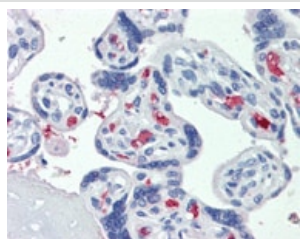
“应用说明”部分 下显示的仅为推荐的起始稀释度;实际最佳的稀释度/浓度应由使用者检定。

应用	Ab评论	说明
IHC-P		Use a concentration of 3.75 µg/ml. Perform heat mediated antigen retrieval with citrate buffer pH 6 before commencing with IHC staining protocol.

## 靶标

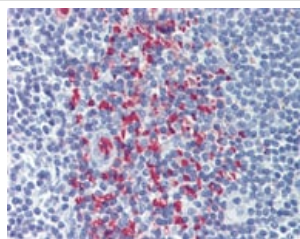
<b>功能</b>	Receptor for KLRB1 that protects target cells against natural killer cell-mediated lysis. Inhibits osteoclast formation. Inhibits bone resorption. Modulates the release of interferon-gamma. Binds high molecular weight sulfated glycosaminoglycans.
<b>组织特异性</b>	Detected in peripheral blood leukocytes, osteoblasts, lymph node, thymus and spleen. Isoform 1, isoform 2 and isoform 4 are expressed in T and B lymphocytes, and at lower levels in NK cells. They are also expressed in B-cell lines and LPS-matured monocyte-derived dendritic cells.
<b>序列相似性</b>	Contains 1 C-type lectin domain.
<b>细胞定位</b>	Endoplasmic reticulum and Cell membrane. Cell surface.

## 图片



ab111105, at 3.75µg/ml, staining CLED2D in formalin-fixed, paraffin-embedded Human Placenta tissue by Immunohistochemistry.

Immunohistochemistry (Formalin/PFA-fixed paraffin-embedded sections) - Anti-CLEC2D antibody (ab111105)



ab111105, at 3.75µg/ml, staining CLED2D in formalin-fixed, paraffin-embedded Human Tonsil tissue by Immunohistochemistry.

Immunohistochemistry (Formalin/PFA-fixed paraffin-embedded sections) - Anti-CLEC2D antibody (ab111105)

### **Our Abpromise to you: Quality guaranteed and expert technical support**

---

- Replacement or refund for products not performing as stated on the datasheet
- Valid for 12 months from date of delivery
- Response to your inquiry within 24 hours
  
- We provide support in Chinese, English, French, German, Japanese and Spanish
- Extensive multi-media technical resources to help you
- We investigate all quality concerns to ensure our products perform to the highest standards

If the product does not perform as described on this datasheet, we will offer a refund or replacement. For full details of the Abpromise, please visit <https://www.abcam.cn/abpromise> or contact our technical team.

### **Terms and conditions**

---

- Guarantee only valid for products bought direct from Abcam or one of our authorized distributors