


### Anti-Claudin 4 antibody ab15104

★★★★☆ [5 Abreviews](#) [31 References](#) [4 图像](#)

#### 概述

产品名称	Anti-Claudin 4抗体
描述	兔多克隆抗体to Claudin 4
宿主	Rabbit
经测试应用	适用于: WB, IHC-P
种属反应性	与反应: Human 预测可用于: Mouse, Pig 
免疫原	Synthetic peptide within Human Claudin 4 aa 150 to the C-terminus. The exact sequence is proprietary. Database link: <a href="#">O14493</a>
常规说明	<p><b>This product is FOR RESEARCH USE ONLY. For commercial use, please contact <a href="mailto:partnerships@abcam.com">partnerships@abcam.com</a>.</b></p> <p>The Life Science industry has been in the grips of a reproducibility crisis for a number of years. Abcam is leading the way in addressing this with our range of recombinant monoclonal antibodies and knockout edited cell lines for gold-standard validation. Please check that this product meets your needs before purchasing.</p> <p>If you have any questions, special requirements or concerns, please send us an inquiry and/or contact our Support team ahead of purchase. Recommended alternatives for this product can be found below, along with publications, customer reviews and Q&amp;As</p>

#### 性能

形式	Liquid
存放说明	Shipped at 4°C. Store at +4°C short term (1-2 weeks). Upon delivery aliquot. Store at -20°C or -80°C. Avoid freeze / thaw cycle.
存储溶液	pH: 7.60 Preservative: 0.1% Sodium azide Constituents: PBS, 1% BSA
纯度	Immunogen affinity purified
克隆	多克隆
同种型	IgG

应用

**The Abpromise guarantee**      **Abpromise™**承诺保证使用ab15104于以下的经测试应用

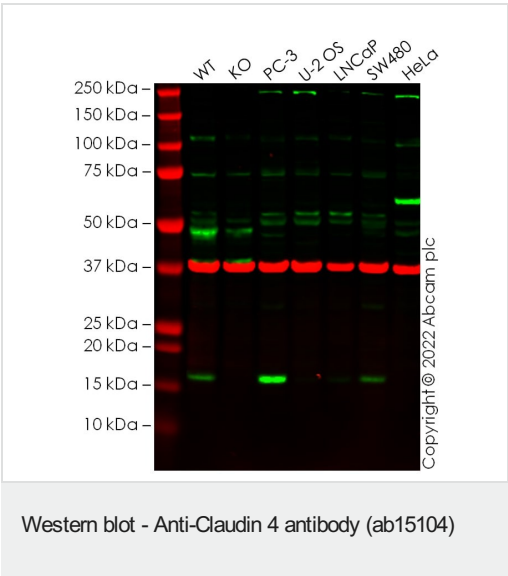
“应用说明”部分 下显示的仅为推荐的起始稀释度;实际最佳的稀释度/浓度应由使用者检定。

应用	Ab评论	说明
WB	★★★★★ (2)	Use a concentration of 1 µg/ml. Detects a band of approximately 20 kDa (predicted molecular weight: 22 kDa).
IHC-P	★★★★★ (2)	1/200. Perform heat mediated antigen retrieval before commencing with IHC staining protocol.

靶标

功能	Plays a major role in tight junction-specific obliteration of the intercellular space.
疾病相关	Note=CLDN4 is located in the Williams-Beuren syndrome (WBS) critical region. WBS results from a hemizygous deletion of several genes on chromosome 7q11.23, thought to arise as a consequence of unequal crossing over between highly homologous low-copy repeat sequences flanking the deleted region.
序列相似性	Belongs to the claudin family.
细胞定位	Cell junction > tight junction. Cell membrane.

图片



**All lanes :** Anti-Claudin 4 antibody (ab15104) at 1 µg/ml

- Lane 1 :** Wild-type MCF7 cell lysate
- Lane 2 :** CLDN4 knockout MCF7 cell lysate
- Lane 3 :** PC-3 cell lysate
- Lane 4 :** U-2 OS cell lysate
- Lane 5 :** LNCaP cell lysate
- Lane 6 :** SW480 cell lysate
- Lane 7 :** HeLa cell lysate

Lysates/proteins at 20 µg per lane.

**Secondary**

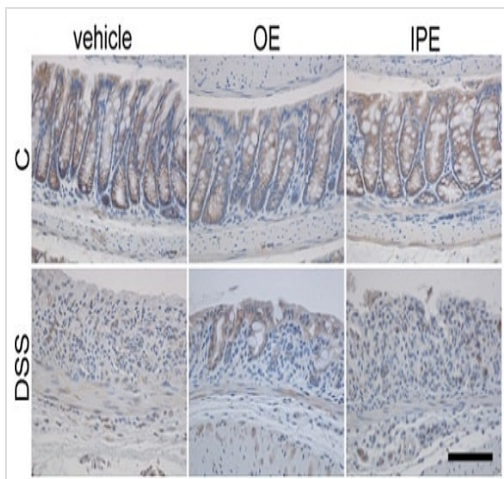
**All lanes :** Goat anti-Rabbit IgG H&L 800CW and Goat anti-Mouse IgG H&L 680RD at 1/20000 dilution

Performed under reducing conditions.

**Predicted band size:** 22 kDa

**Observed band size:** 17 kDa

False colour image of Western blot: Anti-Claudin 4 antibody staining at 1 ug/ml, shown in green; Mouse anti-GAPDH antibody [6C5] ([ab8245](#)) loading control staining at 1/20000 dilution, shown in red. In Western blot, ab15104 was shown to bind specifically to Claudin 4. A band was observed at 17 kDa in wild-type MCF7 cell lysates with no signal observed at this size in CLDN4 knockout cell line [ab274946](#) (knockout cell lysate [ab275004](#)). To generate this image, wild-type and CLDN4 knockout MCF7 cell lysates were analysed. First, samples were run on an SDS-PAGE gel then transferred onto a nitrocellulose membrane. Membranes were blocked in fluorescent western blot (TBS-based) blocking solution before incubation with primary antibodies overnight at 4 °C. Blots were washed four times in TBS-T, incubated with secondary antibodies for 1 h at room temperature, washed again four times then imaged. Secondary antibodies used were Goat anti-Rabbit IgG H&L 800CW and Goat anti-Mouse IgG H&L 680RD at 1/20000 dilution.



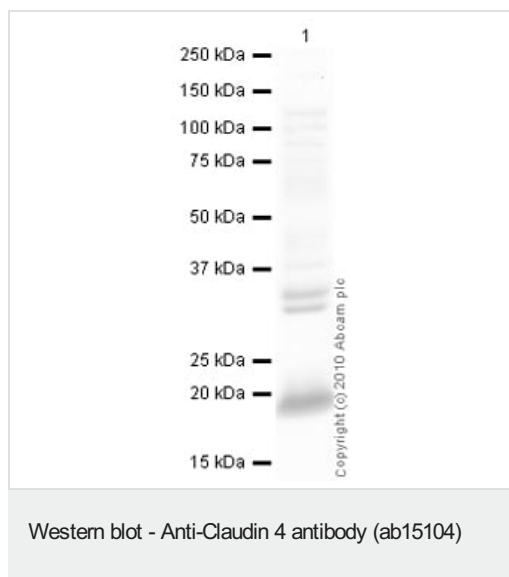
Immunohistochemistry (Formalin/PFA-fixed paraffin-embedded sections) - Anti-Claudin 4 antibody (ab15104)

Lean QY et al. PLoS One (2015) Reproduced under the Creative Commons license  
<http://creativecommons.org/licenses/by/4.0/>

Immunohistochemical analysis of healthy and colitis mouse colon sections (untreated and treated with enoxaparin) labeling claudin-4 with ab15104 at 1/200. [ab7090](#), anti-rabbit immunoglobulin G conjugated to horseradish peroxidase (HRP) at 1/300 was used as the secondary antibody. [ab64238](#) at 1/50 was used to develop the histological signal.

Antigen retrieval was performed by incubating the sections for 10 minutes at 97°C in 1 mM EDTA buffer, pH 8.0 or 10 mM citrate buffer, pH 6.0.

Control, C; untreated colitis, DSS; oral enoxaparin, OE; intraperitoneal injection of enoxaparin, IPE.



Anti-Claudin 4 antibody (ab15104) at 1 µg/ml + SHSY-5Y (Human neuroblastoma cell line) Whole Cell Lysate at 10 µg

### Secondary

Goat Anti-Rabbit IgG H&L (HRP) preadsorbed ([ab97080](#)) at 1/5000 dilution

Developed using the ECL technique.

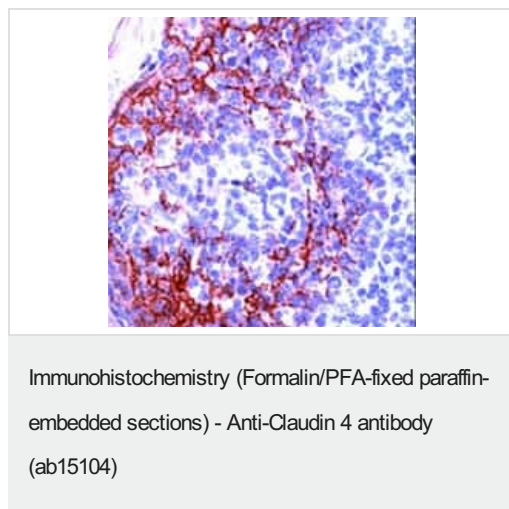
Performed under reducing conditions.

**Predicted band size:** 22 kDa

**Observed band size:** 20 kDa

**Additional bands at:** 125 kDa, 34 kDa, 35 kDa. We are unsure as to the identity of these extra bands.

**Exposure time:** 30 seconds



Formalin fixed paraffin embedded human tonsil stained with ab15104 (1/200, 10 min at room temperature).

**Please note:** All products are "FOR RESEARCH USE ONLY. NOT FOR USE IN DIAGNOSTIC PROCEDURES"

### Our Abpromise to you: Quality guaranteed and expert technical support

- Replacement or refund for products not performing as stated on the datasheet
- Valid for 12 months from date of delivery
- Response to your inquiry within 24 hours

- We provide support in Chinese, English, French, German, Japanese and Spanish
- Extensive multi-media technical resources to help you
- We investigate all quality concerns to ensure our products perform to the highest standards

If the product does not perform as described on this datasheet, we will offer a refund or replacement. For full details of the Abpromise, please visit <https://www.abcam.cn/abpromise> or contact our technical team.

#### **Terms and conditions**

---

- Guarantee only valid for products bought direct from Abcam or one of our authorized distributors