

Anti-Claudin 3 antibody [EPR19971] ab214487

重组 RabMAb

★★★★★ **3 Abreviews** **5 References** **9 图像**

概述

产品名称	Anti-Claudin 3抗体[EPR19971]
描述	兔单克隆抗体[EPR19971] to Claudin 3
宿主	Rabbit
经测试应用	适用于: WB, IHC-P, ICC/IF, IP, Flow Cyt (Intra)
种属反应性	与反应: Human
免疫原	Synthetic peptide. This information is proprietary to Abcam and/or its suppliers.
阳性对照	WB: SW480, MCF7 and Caco-2 whole cell lysates; human breast cancer, pancreas, ovary cancer and fetal kidney lysates. IHC-P: Human pancreas, prostate and breast cancer tissues. ICC/IF: MCF7 cells. Flow Cyt (intra): MCF7 cells. IP: MCF7 whole cell lysate.
常规说明	<p>This product is a recombinant monoclonal antibody, which offers several advantages including:</p> <ul style="list-style-type: none"> - High batch-to-batch consistency and reproducibility - Improved sensitivity and specificity - Long-term security of supply - Animal-free production <p>For more information see here.</p> <p>Our RabMAb[®] technology is a patented hybridoma-based technology for making rabbit monoclonal antibodies. For details on our patents, please refer to RabMAb[®] patents.</p>

性能

形式	Liquid
存放说明	Shipped at 4°C. Store at +4°C short term (1-2 weeks). Upon delivery aliquot. Store at -20°C long term. Avoid freeze / thaw cycle.
存储溶液	<p>pH: 7.2</p> <p>Preservative: 0.01% Sodium azide</p> <p>Constituents: 59% PBS, 40% Glycerol, 0.05% BSA</p>
纯度	Protein A purified
克隆	单克隆
克隆编号	EPR19971

同种型

lgG

应用

The Abpromise guarantee

Abpromise™承诺保证使用ab214487于以下的经测试应用

“应用说明”部分 下显示的仅为推荐的起始稀释度;实际最佳的稀释度/浓度应由使用者检定。

应用	Ab评论	说明
WB	★☆☆☆☆ (1)	1/1000. Detects a band of approximately 20 kDa (predicted molecular weight: 23 kDa).
IHC-P	★★★★★ (2)	1/250. Perform heat mediated antigen retrieval with Tris/EDTA buffer pH 9.0 before commencing with IHC staining protocol.
ICC/IF		1/100.
IP		1/30.
Flow Cyt (Intra)		1/50. ab172730 - Rabbit monoclonal IgG, is suitable for use as an isotype control with this antibody.

靶标

功能

Plays a major role in tight junction-specific obliteration of the intercellular space, through calcium-independent cell-adhesion activity.

疾病相关

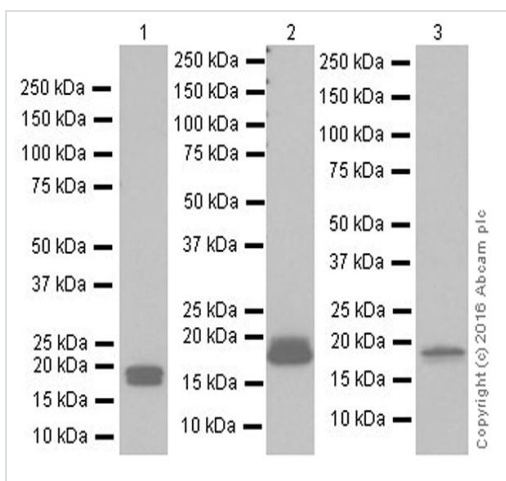
Note=CLDN3 is located in the Williams-Beuren syndrome (WBS) critical region. WBS results from a hemizygous deletion of several genes on chromosome 7q11.23, thought to arise as a consequence of unequal crossing over between highly homologous low-copy repeat sequences flanking the deleted region.

序列相似性

Belongs to the claudin family.

细胞定位

Cell junction > tight junction. Cell membrane.



Western blot - Anti-Claudin 3 antibody [EPR19971]
(ab214487)

All lanes : Anti-Claudin 3 antibody [EPR19971] (ab214487) at 1/1000 dilution

Lane 1 : SW480 (Human colorectal adenocarcinoma cell line) whole cell lysate

Lane 2 : MCF7 (Human breast adenocarcinoma cell line) whole cell lysate

Lane 3 : Caco-2 (Human colorectal adenocarcinoma cell line) whole cell lysate

Lysates/proteins at 10 µg per lane.

Secondary

All lanes : Goat Anti-Rabbit IgG H&L (HRP) ([ab97051](#)) at 1/100000 dilution

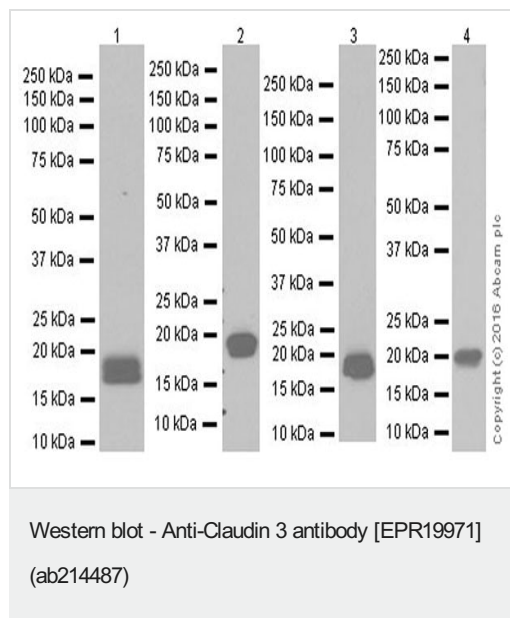
Predicted band size: 23 kDa

Observed band size: 20 kDa

Exposure time: 1 second

Blocking/Dilution buffer: 5% NFDm/TBST.

Doublet bands observed correspond to full length and processed forms of the claudin-3 protein. This is consistent with what has been described in the literature (PMID: 26170992).



All lanes : Anti-Claudin 3 antibody [EPR19971] (ab214487) at 1/1000 dilution

Lane 1 : Human breast cancer lysate

Lane 2 : Human pancreas lysate

Lane 3 : Human ovary cancer lysate

Lane 4 : Human fetal kidney lysate

Lysates/proteins at 10 µg per lane.

Secondary

All lanes : Goat Anti-Rabbit IgG Peroxidase Conjugate, specific to the non-reduced form of IgG at 1/5000 dilution

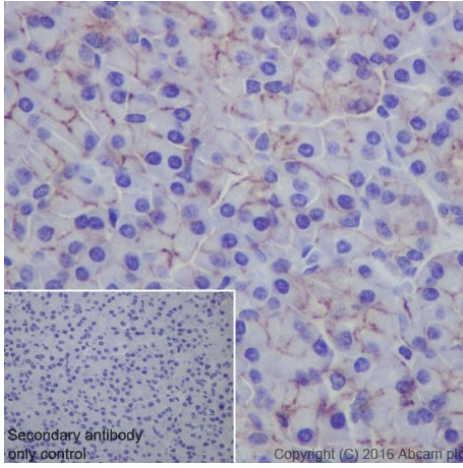
Predicted band size: 23 kDa

Observed band size: 20 kDa

Blocking/Dilution buffer: 5% NFDm/TBST.

Exposure time: Lane 1/2: 1 minute; Lane 3: 3 seconds; Lane 4: 3 minutes.

Doublet bands observed correspond to full length and processed forms of the claudin-3 protein. This is consistent with what has been described in the literature (PMID: 26170992).

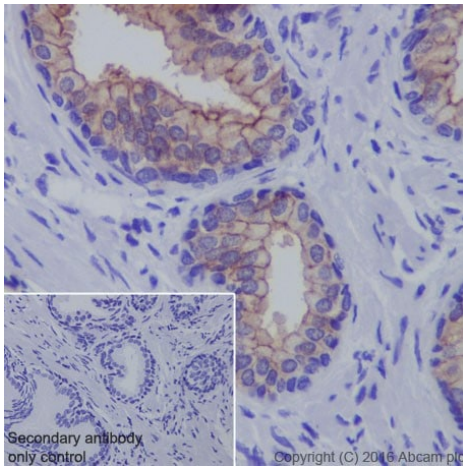


Immunohistochemistry (Formalin/PFA-fixed paraffin-embedded sections) - Anti-Claudin 3 antibody [EPR19971] (ab214487)

Immunohistochemical analysis of paraffin-embedded human pancreas tissue labeling Claudin 3 with ab214487 at 1/250 dilution, followed by Goat Anti-Rabbit IgG H&L (HRP) ([ab97051](#)) at 1/500 dilution. Membrane staining on the pancreatic acinar cells of human pancreas is observed. Counter stained with Hematoxylin.

Secondary antibody only control: Used PBS instead of primary antibody, secondary antibody is Goat Anti-Rabbit IgG H&L (HRP) ([ab97051](#)) at 1/500 dilution.

Perform heat mediated antigen retrieval with Tris/EDTA buffer pH 9.0 before commencing with IHC staining protocol.

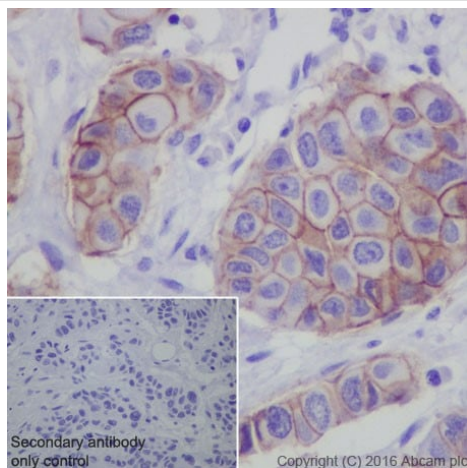


Immunohistochemistry (Formalin/PFA-fixed paraffin-embedded sections) - Anti-Claudin 3 antibody [EPR19971] (ab214487)

Immunohistochemical analysis of paraffin-embedded human prostate tissue labeling Claudin 3 with ab214487 at 1/250 dilution, followed by Goat Anti-Rabbit IgG H&L (HRP) ([ab97051](#)) at 1/500 dilution. Membrane staining on the epithelium of human benign prostatic hyperplasia is observed. Counter stained with Hematoxylin.

Secondary antibody only control: Used PBS instead of primary antibody, secondary antibody is Goat Anti-Rabbit IgG H&L (HRP) ([ab97051](#)) at 1/500 dilution.

Perform heat mediated antigen retrieval with Tris/EDTA buffer pH 9.0 before commencing with IHC staining protocol.

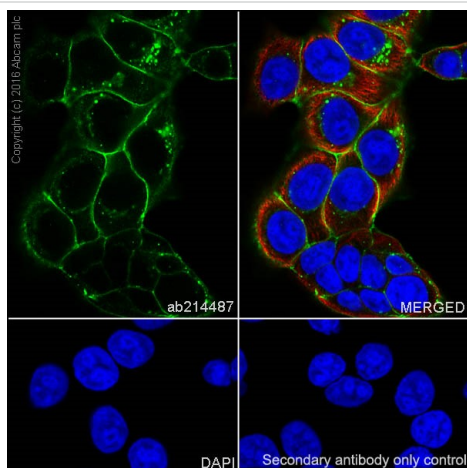


Immunohistochemistry (Formalin/PFA-fixed paraffin-embedded sections) - Anti-Claudin 3 antibody [EPR19971] (ab214487)

Immunohistochemical analysis of paraffin-embedded human breast cancer tissue labeling Claudin 3 with ab214487 at 1/250 dilution, followed by Goat Anti-Rabbit IgG H&L (HRP) ([ab97051](#)) at 1/500 dilution. Membrane staining on the tumor cells of human breast cancer is observed. Counter stained with Hematoxylin.

Secondary antibody only control: Used PBS instead of primary antibody, secondary antibody is Goat Anti-Rabbit IgG H&L (HRP) ([ab97051](#)) at 1/500 dilution.

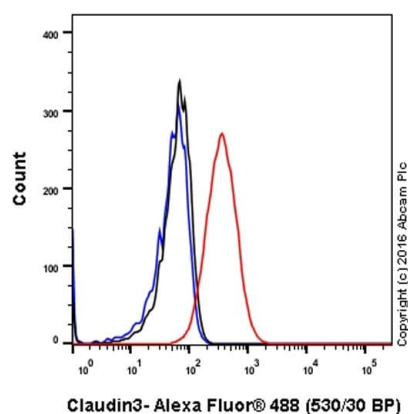
Perform heat mediated antigen retrieval with Tris/EDTA buffer pH 9.0 before commencing with IHC staining protocol.



Immunocytochemistry/ Immunofluorescence - Anti-Claudin 3 antibody [EPR19971] (ab214487)

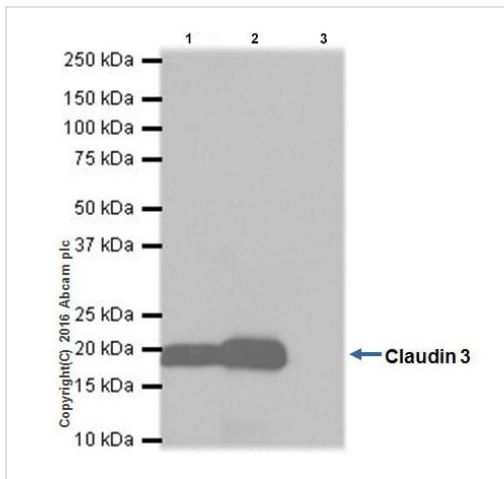
Immunofluorescent analysis of 100% methanol-fixed MCF7 (Human breast adenocarcinoma cell line) cells labeling Claudin 3 with ab214487 at 1/100 dilution, followed by Goat Anti-Rabbit IgG H&L (Alexa Fluor® 488) ([ab150077](#)) secondary antibody at 1/1000 dilution (green). Confocal image showing membrane staining on MCF7 cell line. The nuclear counterstain is DAPI (blue). Tubulin is detected with Anti-alpha Tubulin antibody [DM1A] - Microtubule Marker (Alexa Fluor® 594) [ab195889](#) at 1/200 dilution (red).

Secondary antibody only control: Used PBS instead of primary antibody, secondary antibody is Goat Anti-Rabbit IgG H&L (Alexa Fluor® 488) ([ab150077](#)) at 1/1000 dilution.



Flow Cytometry (Intracellular) - Anti-Claudin 3 antibody [EPR19971] (ab214487)

Intracellular flow cytometric analysis of 4% paraformaldehyde-fixed MCF7 (Human breast adenocarcinoma cell line) cells labeling Claudin 3 with ab214487 at 1/50 dilution (red) compared with Rabbit IgG, monoclonal [EPR25A] - Isotype Control ([ab172730](#); black) and an unlabelled control (cells without incubation with primary antibody and secondary antibody; blue). Goat Anti-Rabbit IgG (Alexa Fluor® 488) at 1/2000 dilution was used as the secondary antibody.



Immunoprecipitation - Anti-Claudin 3 antibody
[EPR19971] (ab214487)

Claudin 3 was immunoprecipitated from 0.35 mg of MCF7 (Human breast adenocarcinoma cell line) whole cell lysate with ab214487 at 1/30 dilution. Western blot was performed from the immunoprecipitate using ab214487 at 1/1000 dilution. VeriBlot for IP Detection Reagent (HRP) ([ab131366](#)), was used for detection at 1/10,000 dilution

Lane 1: MCF7 whole cell lysate 10µg (Input).

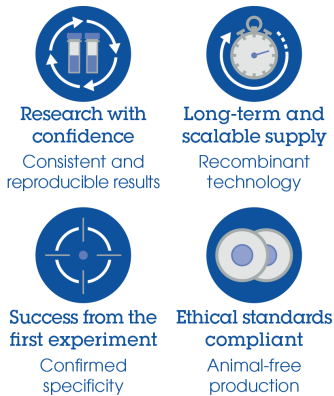
Lane 2: ab214487 IP in MCF7 whole cell lysate.

Lane 3: Rabbit IgG, monoclonal [EPR25A] - Isotype Control ([ab172730](#)) instead of ab214487 in MCF7 whole cell lysate.

Blocking and dilution buffer and concentration: 5% NFDM/TBST.

Exposure time: 3 seconds.

Why choose a recombinant antibody?



Anti-Claudin 3 antibody [EPR19971] (ab214487)

Please note: All products are "FOR RESEARCH USE ONLY. NOT FOR USE IN DIAGNOSTIC PROCEDURES"

Our Abpromise to you: Quality guaranteed and expert technical support

- Replacement or refund for products not performing as stated on the datasheet
- Valid for 12 months from date of delivery
- Response to your inquiry within 24 hours
- We provide support in Chinese, English, French, German, Japanese and Spanish
- Extensive multi-media technical resources to help you
- We investigate all quality concerns to ensure our products perform to the highest standards

If the product does not perform as described on this datasheet, we will offer a refund or replacement. For full details of the Abpromise, please visit <https://www.abcam.cn/abpromise> or contact our technical team.

Terms and conditions

- Guarantee only valid for products bought direct from Abcam or one of our authorized distributors