


# Anti-Claudin 2 antibody ab53032

★★★★★ [2 Abreviews](#) [54 References](#) [2 图像](#)

### 概述

产品名称	Anti-Claudin 2抗体
描述	兔多克隆抗体to Claudin 2
宿主	Rabbit
经测试应用	适用于: ICC/IF, ELISA, IHC-P, WB
种属反应性	与反应: Mouse, Human 预测可用于: Rat 
免疫原	A synthetic peptide derived from human Claudin 2.
常规说明	<p>The Life Science industry has been in the grips of a reproducibility crisis for a number of years. Abcam is leading the way in addressing this with our range of recombinant monoclonal antibodies and knockout edited cell lines for gold-standard validation. Please check that this product meets your needs before purchasing.</p> <p>If you have any questions, special requirements or concerns, please send us an inquiry and/or contact our Support team ahead of purchase. Recommended alternatives for this product can be found below, along with publications, customer reviews and Q&amp;As</p>

### 性能

形式	Liquid
存放说明	Shipped at 4°C. Store at -20°C. Stable for 12 months at -20°C.
存储溶液	<p>pH: 7</p> <p>Preservative: 0.02% Sodium azide</p> <p>Constituents: 50% Glycerol, 0.87% Sodium chloride, PBS</p> <p>Without Mg+2 and Ca+2</p>
纯度	Immunogen affinity purified
纯化说明	ab53032 was affinity-purified from rabbit antiserum by affinity-chromatography using epitope-specific immunogen.
克隆	多克隆
同种型	IgG

应用

The Abpromise guarantee      **Abpromise™**承诺保证使用ab53032于以下的经测试应用

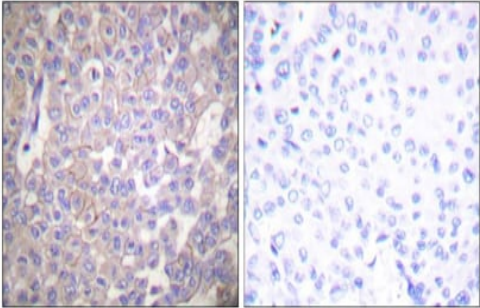
“应用说明”部分 下显示的仅为推荐的起始稀释度;实际最佳的稀释度/浓度应由使用者检定。

应用	Ab评论	说明
ICC/IF	★★★★★ (1)	Use at an assay dependent concentration.
ELISA		Use at an assay dependent concentration.
IHC-P	★★★★★ (1)	Use at an assay dependent concentration.
WB		1/500 - 1/1000. Detects a band of approximately 25 kDa (predicted molecular weight: 25 kDa).

靶标

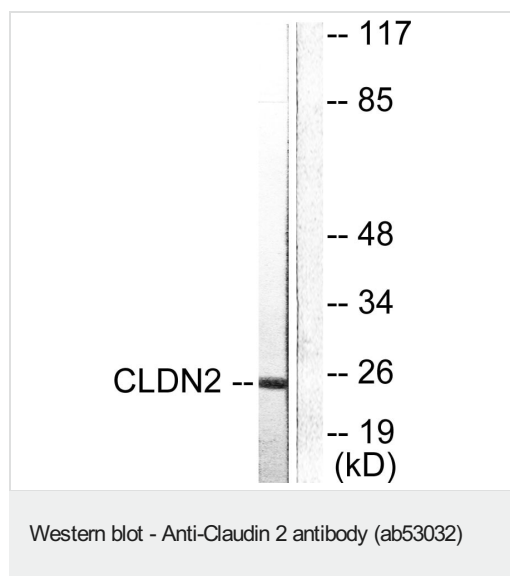
功能	Plays a major role in tight junction-specific obliteration of the intercellular space, through calcium-independent cell-adhesion activity.
序列相似性	Belongs to the claudin family.
细胞定位	Cell junction > tight junction. Cell membrane.

图片



Immunohistochemistry (Formalin/PFA-fixed paraffin-embedded sections) - Anti-Claudin 2 antibody (ab53032)

Immunohistochemistry analysis of paraffin-embedded human breast carcinoma tissue, using ab53032. The picture on the right is blocked with the synthesized peptide.



**All lanes :** Anti-Claudin 2 antibody (ab53032)

**Lane 1 :** NIH/3T3 cells

**Lane 2 :** NIH/3T3 cells with blocking peptide

**Predicted band size:** 25 kDa

**Please note:** All products are "FOR RESEARCH USE ONLY. NOT FOR USE IN DIAGNOSTIC PROCEDURES"

### Our Abpromise to you: Quality guaranteed and expert technical support

- Replacement or refund for products not performing as stated on the datasheet
- Valid for 12 months from date of delivery
- Response to your inquiry within 24 hours
- We provide support in Chinese, English, French, German, Japanese and Spanish
- Extensive multi-media technical resources to help you
- We investigate all quality concerns to ensure our products perform to the highest standards

If the product does not perform as described on this datasheet, we will offer a refund or replacement. For full details of the Abpromise, please visit <https://www.abcam.cn/abpromise> or contact our technical team.

### Terms and conditions

- Guarantee only valid for products bought direct from Abcam or one of our authorized distributors