


Anti-Claudin 1 antibody [SP128] ab115783

重组 RabMAb

3 图像

概述

产品名称	Anti-Claudin 1抗体[SP128]
描述	兔单克隆抗体[SP128] to Claudin 1
宿主	Rabbit
经测试应用	适用于: IHC-P, Flow Cyt
种属反应性	与反应: Human 预测可用于: Mouse, Rat, Cow, Pig 
免疫原	Synthetic peptide. This information is proprietary to Abcam and/or its suppliers.
阳性对照	Human liver carcinoma tissue
常规说明	This product is a recombinant monoclonal antibody, which offers several advantages including: <ul style="list-style-type: none"> - High batch-to-batch consistency and reproducibility - Improved sensitivity and specificity - Long-term security of supply - Animal-free production For more information see here . This product is FOR RESEARCH USE ONLY. For commercial use, please contact partnerships@abcam.com.

性能

形式	Liquid
存放说明	Shipped at 4°C. Upon delivery aliquot and store at -20°C. Avoid freeze / thaw cycles.
存储溶液	pH: 7.60 Preservative: 0.1% Sodium azide Constituents: PBS, 1% BSA
纯度	Protein A/G purified
纯化说明	Purified from TCS by protein A/G.
克隆	单克隆
克隆编号	SP128
同种型	IgG

应用

The Abpromise guarantee **Abpromise™**承诺保证使用ab115783于以下的经测试应用

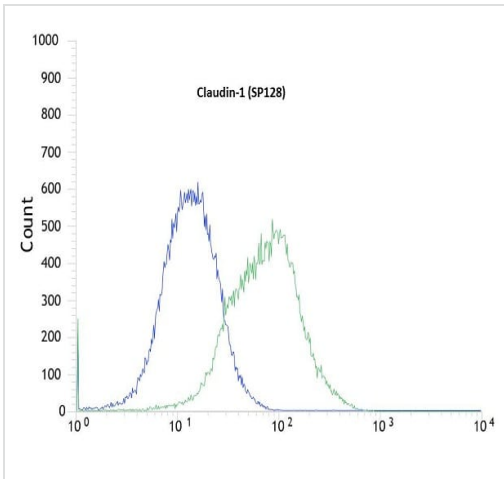
“应用说明”部分 下显示的仅为推荐的起始稀释度;实际最佳的稀释度/浓度应由使用者检定。

应用	Ab评论	说明
IHC-P		1/200. Perform heat mediated antigen retrieval with Tris/EDTA buffer pH 9.0 before commencing with IHC staining protocol.
Flow Cyt		1/100. ab172730 - Rabbit monoclonal IgG, is suitable for use as an isotype control with this antibody.

靶标

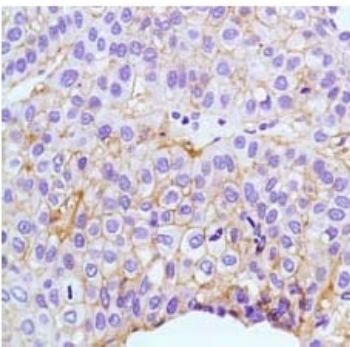
功能	<p>Claudins function as major constituents of the tight junction complexes that regulate the permeability of epithelia. While some claudin family members play essential roles in the formation of impermeable barriers, others mediate the permeability to ions and small molecules. Often, several claudin family members are coexpressed and interact with each other, and this determines the overall permeability. CLDN1 is required to prevent the paracellular diffusion of small molecules through tight junctions in the epidermis and is required for the normal barrier function of the skin. Required for normal water homeostasis and to prevent excessive water loss through the skin, probably via an indirect effect on the expression levels of other proteins, since CLDN1 itself seems to be dispensable for water barrier formation in keratinocyte tight junctions (PubMed:23407391).</p> <p>(Microbial infection) Acts as a receptor for hepatitis C virus in hepatocytes (PubMed:17325668). Acts as a receptor for dengue virus (PubMed:24074594).</p>
组织特异性	Strongly expressed in liver and kidney. Expressed in heart, brain, spleen, lung and testis.
疾病相关	Ichthyosis-sclerosing cholangitis neonatal syndrome
序列相似性	Belongs to the claudin family.
细胞定位	Cell junction, tight junction. Cell membrane.

图片



Flow cytometric analysis of rabbit anti-Claudin 1 (SP128) antibody ab115783 (1/100) in HepG2 cells(green) compared to negative control of rabbit IgG (blue).

Flow Cytometry - Anti-Claudin 1 antibody [SP128] (ab115783)



Staining of Human Claudin 1 in a Formalin/PFA-fixed paraffin-embedded section of Human Liver Carcinoma using ab115783 at a dilution of 1/200.

Immunohistochemistry (Formalin/PFA-fixed paraffin-embedded sections) - Anti-Claudin 1 antibody [SP128] (ab115783)

Why choose a recombinant antibody?



Research with confidence
Consistent and reproducible results



Long-term and scalable supply
Recombinant technology



Success from the first experiment
Confirmed specificity



Ethical standards compliant
Animal-free production

Anti-Claudin 1 antibody [SP128] (ab115783)

Please note: All products are "FOR RESEARCH USE ONLY. NOT FOR USE IN DIAGNOSTIC PROCEDURES"

Our Abpromise to you: Quality guaranteed and expert technical support

- Replacement or refund for products not performing as stated on the datasheet
- Valid for 12 months from date of delivery
- Response to your inquiry within 24 hours
- We provide support in Chinese, English, French, German, Japanese and Spanish
- Extensive multi-media technical resources to help you
- We investigate all quality concerns to ensure our products perform to the highest standards

If the product does not perform as described on this datasheet, we will offer a refund or replacement. For full details of the Abpromise, please visit <https://www.abcam.cn/abpromise> or contact our technical team.

Terms and conditions

- Guarantee only valid for products bought direct from Abcam or one of our authorized distributors