


Anti-Claudin 1 antibody ab15098

★★★★★ 21 Abreviews 210 References 4 图像

概述	
产品名称	Anti-Claudin 1抗体
描述	兔多克隆抗体to Claudin 1
宿主	Rabbit
特异性	From Jan 2024, QC testing of replenishment batches of this polyclonal changed. All tested and expected application and reactive species combinations are still covered by our Abcam product promise. However, we no longer test all applications. For more information on a specific batch, please contact our Scientific Support who will be happy to help. You may also be interested in our alternative recombinant antibody, ab211737 .
经测试应用	适用于: ICC/IF, WB, IHC-P
种属反应性	与反应: Human 预测可用于: Mouse, Rat, Dog, Monkey 
免疫原	Synthetic peptide within Human Claudin 1 aa 150 to the C-terminus (C terminal). The exact sequence is proprietary. Database link: O95832
常规说明	<p>This product is FOR RESEARCH USE ONLY. For commercial use, please contact partnerships@abcam.com.</p> <p>The Life Science industry has been in the grips of a reproducibility crisis for a number of years. Abcam is leading the way in addressing this with our range of recombinant monoclonal antibodies and knockout edited cell lines for gold-standard validation. Please check that this product meets your needs before purchasing.</p> <p>If you have any questions, special requirements or concerns, please send us an inquiry and/or contact our Support team ahead of purchase. Recommended alternatives for this product can be found below, along with publications, customer reviews and Q&As</p>
性能	
形式	Liquid
存放说明	Shipped at 4°C. Store at +4°C short term (1-2 weeks). Upon delivery aliquot. Store at -20°C or -80°C. Avoid freeze / thaw cycle.
存储溶液	pH: 7.60 Preservative: 0.1% Sodium azide

纯度	Constituents: PBS, 1% BSA
克隆	Immunogen affinity purified
同种型	多克隆
	IgG

应用

The Abpromise guarantee **Abpromise™**承诺保证使用ab15098于以下的经测试应用

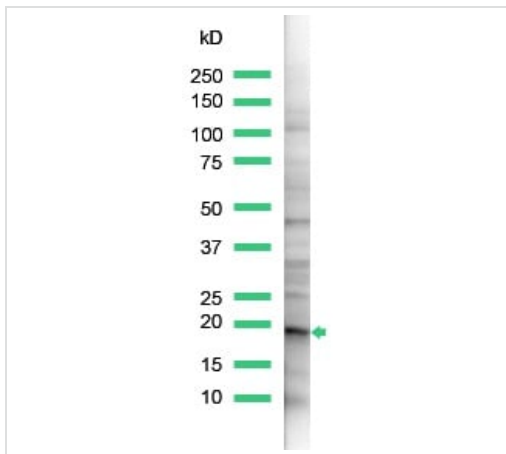
“应用说明”部分 下显示的仅为推荐的起始稀释度;实际最佳的稀释度/浓度应由使用者检定。

应用	Ab评论	说明
ICC/IF	★★★★★ (2)	Use a concentration of 5 µg/ml.
WB	★★★☆☆ (6)	Use at an assay dependent concentration. Predicted molecular weight: 23 kDa.
IHC-P	★★★★★ (10)	Use at an assay dependent concentration.

靶标

功能	<p>Claudins function as major constituents of the tight junction complexes that regulate the permeability of epithelia. While some claudin family members play essential roles in the formation of impermeable barriers, others mediate the permeability to ions and small molecules. Often, several claudin family members are coexpressed and interact with each other, and this determines the overall permeability. CLDN1 is required to prevent the paracellular diffusion of small molecules through tight junctions in the epidermis and is required for the normal barrier function of the skin. Required for normal water homeostasis and to prevent excessive water loss through the skin, probably via an indirect effect on the expression levels of other proteins, since CLDN1 itself seems to be dispensable for water barrier formation in keratinocyte tight junctions (PubMed:23407391).</p> <p>(Microbial infection) Acts as a receptor for hepatitis C virus in hepatocytes (PubMed:17325668).</p> <p>Acts as a receptor for dengue virus (PubMed:24074594).</p>
组织特异性	Strongly expressed in liver and kidney. Expressed in heart, brain, spleen, lung and testis.
疾病相关	Ichthyosis-sclerosing cholangitis neonatal syndrome
序列相似性	Belongs to the claudin family.
细胞定位	Cell junction, tight junction. Cell membrane.

图片

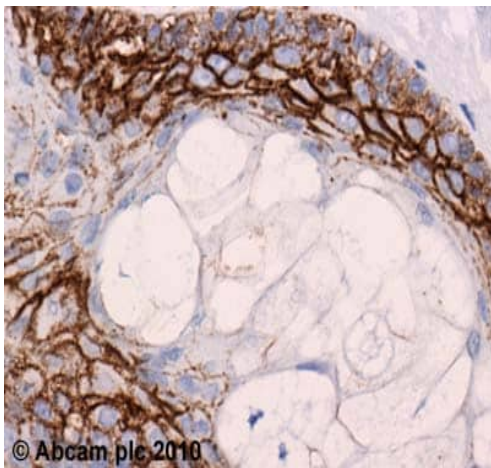


Western blot - Anti-Claudin 1 antibody (ab15098)

Anti-Claudin 1 antibody (ab15098) at 1/25 dilution + HeLa cell lysate

Predicted band size: 23 kDa

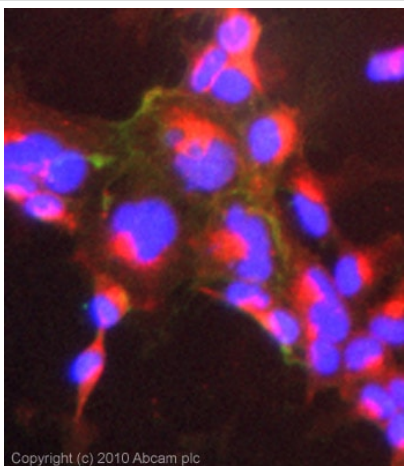
Observed band size: 19 kDa



Immunohistochemistry (Formalin/PFA-fixed paraffin-embedded sections) - Anti-Claudin 1 antibody (ab15098)

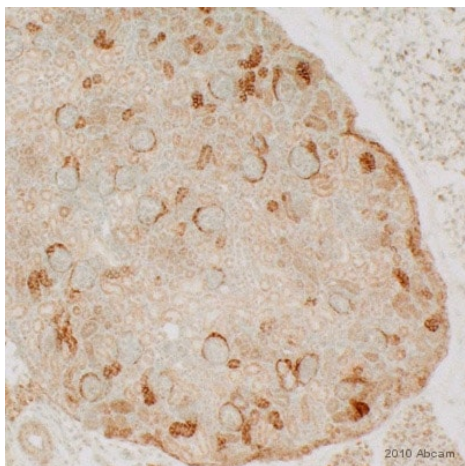
ab15098 (1 µg/ml) staining Claudin 1 in human skin using an automated system (DAKO Autostainer Plus). Using this protocol there is strong staining of the cell membrane.

Sections were rehydrated and antigen retrieved with the Dako 3 in 1 AR buffer EDTA pH 9.0 in a DAKO PT link. Slides were peroxidase blocked in 3% H₂O₂ in methanol for 10 mins. They were then blocked with Dako Protein block for 10 minutes (containing casein 0.25% in PBS) then incubated with primary antibody for 20 min and detected with Dako envision flex amplification kit for 30 minutes. Colorimetric detection was completed with Diaminobenzidine for 5 minutes. Slides were counterstained with Haematoxylin and coverslipped under DePeX. Please note that, for manual staining, optimization of primary antibody concentration and incubation time is recommended. Signal amplification may be required.



ICC/IF image of ab15098 stained Hek293 cells. The cells were 100% methanol fixed (5 min) and then incubated in 1%BSA / 10% normal goat serum / 0.3M glycine in 0.1% PBS-Tween for 1h to permeabilise the cells and block non-specific protein-protein interactions. The cells were then incubated with the antibody (ab15098, 5µg/ml) overnight at +4°C. The secondary antibody (green) was Alexa Fluor® 488 goat anti-rabbit IgG (H+L) used at a 1/1000 dilution for 1h. Alexa Fluor® 594 WGA was used to label plasma membranes (red) at a 1/200 dilution for 1h. DAPI was used to stain the cell nuclei (blue) at a concentration of 1.43µM.

Immunocytochemistry/ Immunofluorescence - Anti-Claudin 1 antibody (ab15098)



ab15098 staining Claudin 1 in mouse kidney tissue sections by IHC-P (paraformaldehyde-fixed paraffin-embedded sections). Tissue samples were fixed with paraformaldehyde and blocked with 20% serum for 30 minutes at 22°C; antigen retrieval was by heat mediation in Citrate buffer (pH6). The sample was incubated with primary antibody (1/500 in blocking buffer) at 22°C for 16 hours. A Biotin-conjugated Donkey polyclonal to rabbit IgG (1/250) was used as secondary antibody.

Immunohistochemistry (Formalin/PFA-fixed paraffin-embedded sections) - Anti-Claudin 1 antibody (ab15098)

This image is courtesy of an anonymous Abreview

Please note: All products are "FOR RESEARCH USE ONLY. NOT FOR USE IN DIAGNOSTIC PROCEDURES"

Our Abpromise to you: Quality guaranteed and expert technical support

- Replacement or refund for products not performing as stated on the datasheet
- Valid for 12 months from date of delivery
- Response to your inquiry within 24 hours

- We provide support in Chinese, English, French, German, Japanese and Spanish
- Extensive multi-media technical resources to help you
- We investigate all quality concerns to ensure our products perform to the highest standards

If the product does not perform as described on this datasheet, we will offer a refund or replacement. For full details of the Abpromise, please visit <https://www.abcam.cn/abpromise> or contact our technical team.

Terms and conditions

- Guarantee only valid for products bought direct from Abcam or one of our authorized distributors