

Anti-Clathrin heavy chain antibody [TD.1] ab24578

9 References 1 图像

概述	
产品名称	Anti-Clathrin heavy chain抗体[TD.1]
描述	小鼠单克隆抗体[TD.1] to Clathrin heavy chain
宿主	Mouse
特异性	This antibody reacts with clathrin heavy chains (CHC).
经测试应用	适用于: ICC/IF 不适用于: IP
种属反应性	与反应: Human
免疫原	This antibody was raised using the globular N terminal domain of clathrin heavy chain.
阳性对照	Methanol fixed HeLa cells for IF.
常规说明	<p>The Life Science industry has been in the grips of a reproducibility crisis for a number of years. Abcam is leading the way in addressing this with our range of recombinant monoclonal antibodies and knockout edited cell lines for gold-standard validation. Please check that this product meets your needs before purchasing.</p> <p>If you have any questions, special requirements or concerns, please send us an inquiry and/or contact our Support team ahead of purchase. Recommended alternatives for this product can be found below, along with publications, customer reviews and Q&amp;As</p>
性能	
形式	Liquid
存放说明	Shipped at 4°C. Upon delivery aliquot and store at -20°C. Avoid freeze / thaw cycles.
存储溶液	Preservative: 0.03% Thimerosal (merthiolate)
纯度	Protein G purified
克隆	单克隆
克隆编号	TD.1
同种型	IgG1
轻链类型	kappa
应用	

## The Abpromise guarantee

**Abpromise™** 承诺保证使用ab24578于以下的经测试应用

“应用说明”部分 下显示的仅为推荐的起始稀释度;实际最佳的稀释度/浓度应由使用者检定。

应用	Ab评论	说明
ICC/IF		Use at an assay dependent concentration.

### 应用说明

Is unsuitable for IP.

## 靶标

### 功能

Clathrin is the major protein of the polyhedral coat of coated pits and vesicles. Two different adapter protein complexes link the clathrin lattice either to the plasma membrane or to the trans-Golgi network.

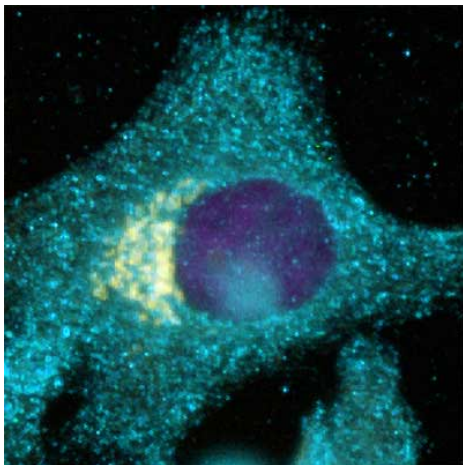
### 序列相似性

Belongs to the clathrin heavy chain family.

### 细胞定位

Cytoplasmic vesicle membrane. Membrane > coated pit. Melanosome. Cytoplasmic face of coated pits and vesicles. Identified by mass spectrometry in melanosome fractions from stage I to stage IV.

## 图片



ab24578 at a 1/200 dilution staining clathrin triskelion (blue) throughout the methanol fixed HeLa cells by Immunocytochemistry/Immunofluorescence. The Golgi is brilliantly stained by Giantin (yellow). Secondary antibodies used were a goat anti-mouse alexafluor AF546 and a goat anti-rabbit alexafluor AF488 applied at 1 ug/mL. The DNA was visualized with DAPI at 1 ug/mL. The colors of this image were altered.

Immunocytochemistry/ Immunofluorescence - Anti-Clathrin heavy chain antibody [TD.1] (ab24578)

**Please note:** All products are "FOR RESEARCH USE ONLY. NOT FOR USE IN DIAGNOSTIC PROCEDURES"

## Our Abpromise to you: Quality guaranteed and expert technical support

- Replacement or refund for products not performing as stated on the datasheet
- Valid for 12 months from date of delivery
- Response to your inquiry within 24 hours

- We provide support in Chinese, English, French, German, Japanese and Spanish
- Extensive multi-media technical resources to help you
- We investigate all quality concerns to ensure our products perform to the highest standards

If the product does not perform as described on this datasheet, we will offer a refund or replacement. For full details of the Abpromise, please visit <https://www.abcam.cn/abpromise> or contact our technical team.

#### **Terms and conditions**

---

- Guarantee only valid for products bought direct from Abcam or one of our authorized distributors