


# Anti-Clathrin heavy chain antibody ab21679

★★★★★ **38 Abreviews** **130 References** **5 图像**

### 概述

产品名称	Anti-Clathrin heavy chain抗体
描述	兔多克隆抗体to Clathrin heavy chain
宿主	Rabbit
特异性	Replenishment batches of our polyclonal antibody, ab21679 are tested in WB. Previous batches were additionally validated in ICC/IF. This application is still expected to work and is covered by our Abpromise guarantee. You may also be interested in our alternative recombinant antibody, <a href="#">ab172958</a> .
经测试应用	适用于: WB, ICC/IF
种属反应性	与反应: Mouse, Rat, Human 预测可用于: Chicken, Hamster 
免疫原	Synthetic peptide conjugated to KLH derived from within residues 1650 to the C-terminus of Human Clathrin heavy chain. 参阅Abcam的专有抗源政策 (Peptide available as <a href="#">ab23440</a> .)
常规说明	<p>The Life Science industry has been in the grips of a reproducibility crisis for a number of years. Abcam is leading the way in addressing this with our range of recombinant monoclonal antibodies and knockout edited cell lines for gold-standard validation. Please check that this product meets your needs before purchasing.</p> <p>If you have any questions, special requirements or concerns, please send us an inquiry and/or contact our Support team ahead of purchase. Recommended alternatives for this product can be found below, along with publications, customer reviews and Q&amp;As</p>

### 性能

形式	Liquid
存放说明	Shipped at 4°C. Store at +4°C short term (1-2 weeks). Upon delivery aliquot. Store at -20°C or -80°C. Avoid freeze / thaw cycle.
存储溶液	<p>pH: 7.40</p> <p>Preservative: 0.02% Sodium azide</p> <p>Constituents: PBS, 1% BSA</p> <p>Batches of this product that have a concentration &lt; 1mg/ml may have BSA added as a stabilising agent. If you would like information about the formulation of a specific lot, please contact our scientific support team who will be happy to help.</p>

纯度	Immunogen affinity purified
克隆	多克隆
同种型	IgG

应用

The Abpromise guarantee      **Abpromise™**承诺保证使用ab21679于以下的经测试应用

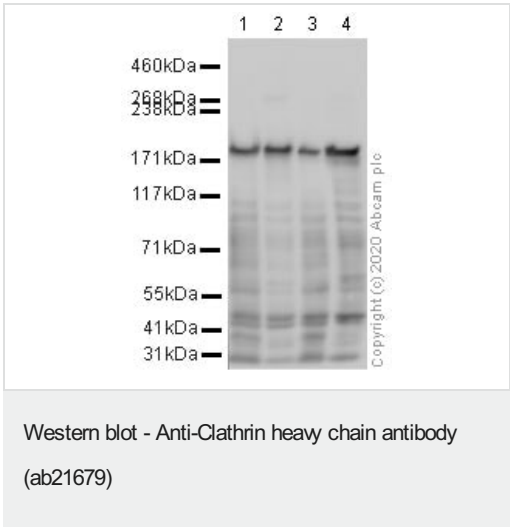
“应用说明”部分 下显示的仅为推荐的起始稀释度 ;实际最佳的稀释度/浓度应由使用者检定。

应用	Ab评论	说明
WB	★★★★★ (13)	Use a concentration of 1 µg/ml. Detects a band of approximately 180 kDa (predicted molecular weight: 180 kDa).
ICC/IF	★★★★★ (19)	Use a concentration of 1 µg/ml.

靶标

功能	Clathrin is the major protein of the polyhedral coat of coated pits and vesicles. Two different adapter protein complexes link the clathrin lattice either to the plasma membrane or to the trans-Golgi network.
序列相似性	Belongs to the clathrin heavy chain family.
细胞定位	Cytoplasmic vesicle membrane. Membrane > coated pit. Melanosome. Cytoplasmic face of coated pits and vesicles. Identified by mass spectrometry in melanosome fractions from stage I to stage IV.

图片



**All lanes** : Anti-Clathrin heavy chain antibody (ab21679) at 1 µg/ml

**Lane 1** : HeLa whole cell lysate

**Lane 2** : A431 whole cell lysate

**Lane 3** : NIH 3T3 whole cell lysate

**Lane 4** : PC12 whole cell lysate

Lysates/proteins at 10 µg per lane.

Secondary

**All lanes** : Goat polyclonal to Rabbit IgG - H&L - Pre-Adsorbed (HRP) at 1/50000 dilution

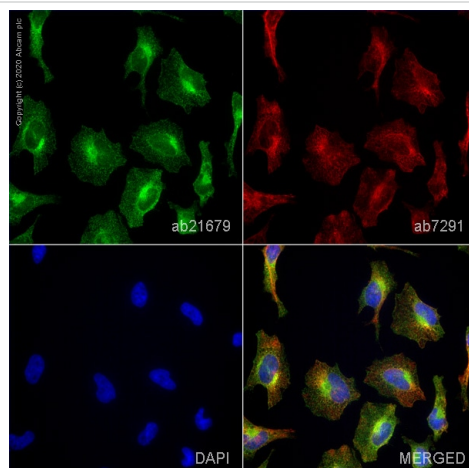
**Predicted band size:** 180 kDa

**Observed band size:** 180 kDa

Blocking buffer: 2% BSA

Gel type: TA

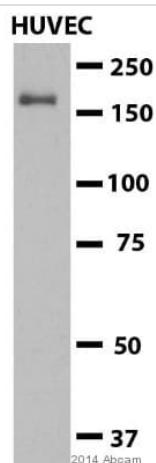
Exposure Time: 1 minute



Immunocytochemistry/ Immunofluorescence - Anti-Clathrin heavy chain antibody (ab21679)

ab21679 staining Clathrin heavy chain in HeLa cells. The cells were fixed with 4% paraformaldehyde (10 min), permeabilized with 0.1% PBS-Tween for 5 minutes and then blocked with 1% BSA/10% normal goat serum/0.3M glycine in 0.1%PBS-Tween for 1h. The cells were then incubated overnight at 4°C with ab21679 at 1µg/ml and **ab7291**, Mouse monoclonal [DM1A] to alpha Tubulin - Loading Control. Cells were then incubated with **ab150081**, Goat polyclonal Secondary Antibody to Rabbit IgG - H&L (Alexa Fluor® 488), pre-adsorbed at 1/1000 dilution (shown in green) and **ab150120**, Goat polyclonal Secondary Antibody to Mouse IgG - H&L (Alexa Fluor® 594), pre-adsorbed at 1/1000 dilution (shown in pseudocolour red). Nuclear DNA was labelled with DAPI (shown in blue).

Image was acquired with a high-content analyser (Operetta CLS, Perkin Elmer) and a maximum intensity projection of confocal sections is shown.



Western blot - Anti-Clathrin heavy chain antibody (ab21679)

This image is courtesy of an anonymous Abreview

Anti-Clathrin heavy chain antibody (ab21679) at 1/1000 dilution + HUVEC cell lysate at 20 µg

#### Secondary

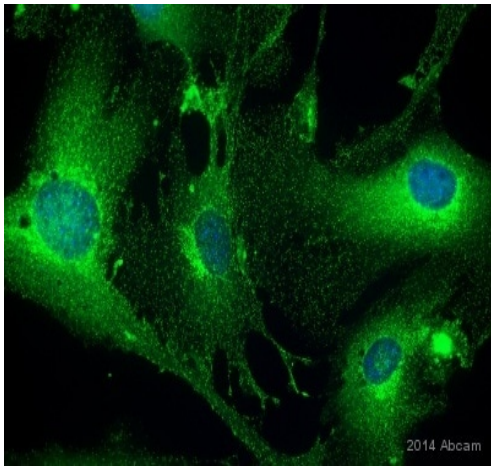
HRP conjugated goat anti-rabbit IgG at 1/10000 dilution

Developed using the ECL technique.

Performed under reducing conditions.

**Predicted band size:** 180 kDa

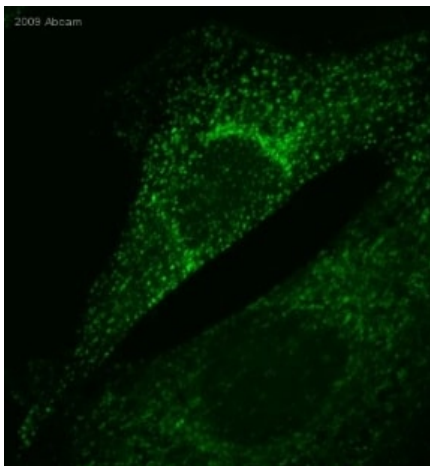
**Exposure time:** 5 seconds



Immunocytochemistry/ Immunofluorescence - Anti-Clathrin heavy chain antibody (ab21679)

This image is courtesy of an anonymous Abreview

Immunocytochemical analysis of mouse bEnd.3 labeling Clathrin heavy chain with ab21679 at 1/300 dilution using secondary anti-rabbit-alex fluor 488 at 1/500 dilution.



Immunocytochemistry/ Immunofluorescence - Anti-Clathrin heavy chain antibody (ab21679)

This image is a courtesy of Anonymous Abreview

ab21679 staining Clathrin heavy chain in mouse embryonic fibroblasts by Immunocytochemistry/ Immunofluorescence. Cells were fixed with paraformaldehyde and permeabilized with -20°C ethanol. Samples were incubated with primary antibody at 1/500 dilution (in 0.1% Saponin/1% BSA/PBS) for 1 hour. An Alexa Fluor® 546-conjugated goat polyclonal to rabbit IgG (H+L) was used as secondary antibody at 1/500 dilution. Green color in image show positive staining with Alexa Fluor® 546 conjugated secondary.

**Please note:** All products are "FOR RESEARCH USE ONLY. NOT FOR USE IN DIAGNOSTIC PROCEDURES"

#### Our Abpromise to you: Quality guaranteed and expert technical support

- Replacement or refund for products not performing as stated on the datasheet
- Valid for 12 months from date of delivery
- Response to your inquiry within 24 hours

- We provide support in Chinese, English, French, German, Japanese and Spanish
- Extensive multi-media technical resources to help you
- We investigate all quality concerns to ensure our products perform to the highest standards

If the product does not perform as described on this datasheet, we will offer a refund or replacement. For full details of the Abpromise, please visit <https://www.abcam.cn/abpromise> or contact our technical team.

#### **Terms and conditions**

---

- Guarantee only valid for products bought direct from Abcam or one of our authorized distributors