

Anti-CKAP2/LB1 antibody ab85889

2 图像

概述

产品名称	Anti-CKAP2/LB1抗体
描述	兔多克隆抗体to CKAP2/LB1
宿主	Rabbit
经测试应用	适用于: WB, IP
种属反应性	与反应: Human 预测可用于: Gorilla, Orangutan 
免疫原	Synthetic peptide corresponding to Human CKAP2/LB1 aa 633-683. Database link: NP_001091995.1
阳性对照	HeLa whole cell lysate.
常规说明	<p>The Life Science industry has been in the grips of a reproducibility crisis for a number of years. Abcam is leading the way in addressing this with our range of recombinant monoclonal antibodies and knockout edited cell lines for gold-standard validation. Please check that this product meets your needs before purchasing.</p> <p>If you have any questions, special requirements or concerns, please send us an inquiry and/or contact our Support team ahead of purchase. Recommended alternatives for this product can be found below, along with publications, customer reviews and Q&As</p>

性能

形式	Liquid
存放说明	Shipped at 4°C. Upon delivery aliquot and store at -20°C. Avoid freeze / thaw cycles.
存储溶液	pH: 7 Preservative: 0.09% Sodium azide Constituent: Tris citrate/phosphate
纯度	Immunogen affinity purified
纯化说明	ab85889 was affinity purified using an epitope specific to CKAP2/LB1 immobilized on solid support.
克隆	多克隆
同种型	IgG

应用

The Abpromise guarantee **Abpromise™**承诺保证使用ab85889于以下的经测试应用

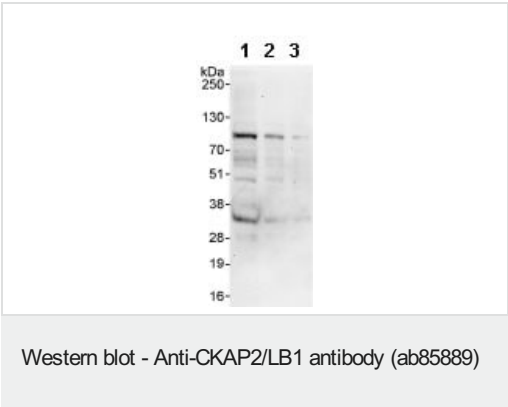
“应用说明”部分 下显示的仅为推荐的起始稀释度;实际最佳的稀释度/浓度应由使用者检定。

应用	Ab评论	说明
WB		1/2000 - 1/10000. Predicted molecular weight: 77 kDa.
IP		Use at 2-5 µg/mg of lysate.

靶标

功能	Possesses microtubule stabilizing properties. Involved in regulating aneuploidy, cell cycling, and cell death in a p53/TP53-dependent manner.
组织特异性	Abundant in testis, thymus, and in tumor derived cell lines, while barely detectable in liver, prostate, and kidney.
序列相似性	Belongs to the CKAP2 family.
发展阶段	Present at the G1/S boundary. Accumulates as cells progress from S to G2 into mitosis. Rapidly degraded during mitosis exit by CDH1-activated anaphase promoting complex/cyclosome (APC/C).
细胞定位	Cytoplasm > cytoskeleton. Cytoplasm > cytoskeleton. Cytoplasm > cytoskeleton > spindle. Cytoplasm > cytoskeleton > spindle pole. Contrary to the ectopically expressed protein, endogenous CKAP2 does not colocalize with microtubules in G1, S and early G2. At late G2 and prophase after separation of duplicated centrosomes, colocalizes with gamma-tubulin and centrosome-proximal microtubules. From prometaphase through anaphase B, colocalizes with mitotic spindle poles and spindle microtubules. During cytokinesis, absent from midbody microtubules.

图片



All lanes : Anti-CKAP2/LB1 antibody (ab85889) at 0.4 µg/ml

Lane 1 : HeLa whole cell lysate at 50 µg

Lane 2 : HeLa whole cell lysate at 15 µg

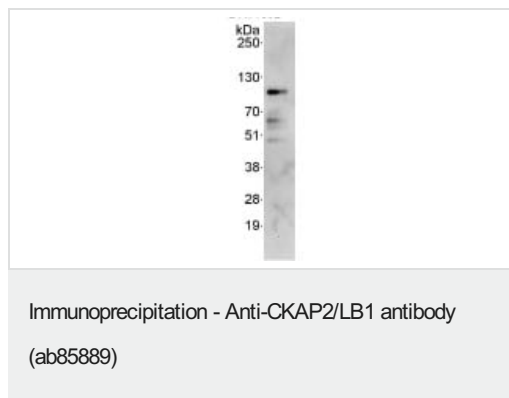
Lane 3 : HeLa whole cell lysate at 5 µg

Developed using the ECL technique.

Predicted band size: 77 kDa

Observed band size: 77 kDa

Exposure time: 90 seconds



Detection of CKAP2/LB1 by Western Blot of Immunoprecipitate.
ab85889, at 1 µg/ml, staining CKAP2/LB1 in HeLa whole cell lysate immunoprecipitated using ab85889 at 3 µg/mg lysate (1 mg/IP; 20% of IP loaded/lane).
Detection: Chemiluminescence with exposure time of 90 seconds.

Please note: All products are "FOR RESEARCH USE ONLY. NOT FOR USE IN DIAGNOSTIC PROCEDURES"

Our Abpromise to you: Quality guaranteed and expert technical support

- Replacement or refund for products not performing as stated on the datasheet
- Valid for 12 months from date of delivery
- Response to your inquiry within 24 hours
- We provide support in Chinese, English, French, German, Japanese and Spanish
- Extensive multi-media technical resources to help you
- We investigate all quality concerns to ensure our products perform to the highest standards

If the product does not perform as described on this datasheet, we will offer a refund or replacement. For full details of the Abpromise, please visit <https://www.abcam.cn/abpromise> or contact our technical team.

Terms and conditions

- Guarantee only valid for products bought direct from Abcam or one of our authorized distributors