

Anti-Cingulin antibody ab117796

[1 References](#) [2 图像](#)

概述

产品名称	Anti-Cingulin抗体
描述	兔多克隆抗体to Cingulin
宿主	Rabbit
经测试应用	适用于: WB, IP
种属反应性	与反应: Human 预测可用于: Chimpanzee, Gorilla 
免疫原	Synthetic peptide, corresponding to a region between amino acids 200-250 of Human Cingulin (NP_065821.1).
阳性对照	293T, Jurkat, and HeLa whole cell lysate (ab150035)
常规说明	<p>The Life Science industry has been in the grips of a reproducibility crisis for a number of years. Abcam is leading the way in addressing this with our range of recombinant monoclonal antibodies and knockout edited cell lines for gold-standard validation. Please check that this product meets your needs before purchasing.</p> <p>If you have any questions, special requirements or concerns, please send us an inquiry and/or contact our Support team ahead of purchase. Recommended alternatives for this product can be found below, along with publications, customer reviews and Q&As</p>

性能

形式	Liquid
存放说明	Shipped at 4°C. Upon delivery aliquot and store at -20°C. Avoid freeze / thaw cycles.
存储溶液	<p>pH: 7</p> <p>Preservative: 0.09% Sodium azide</p> <p>Constituent: 99% Tris citrate/phosphate</p>
纯度	pH 7-8
克隆	Immunogen affinity purified
同种型	多克隆
	IgG

应用

The Abpromise guarantee **Abpromise™**承诺保证使用ab117796于以下的经测试应用

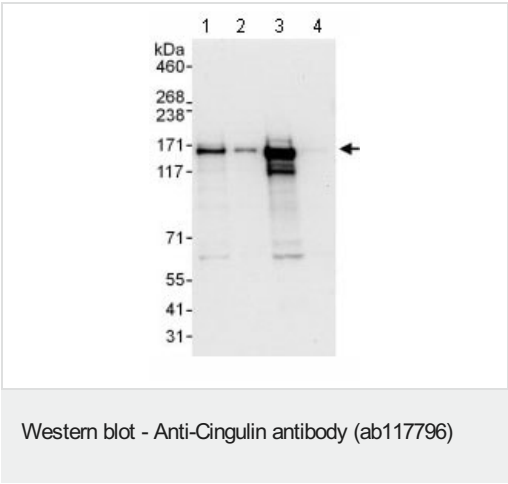
“应用说明”部分 下显示的仅为推荐的起始稀释度;实际最佳的稀释度/浓度应由使用者检定。

应用	Ab评论	说明
WB		1/2000 - 1/10000. Predicted molecular weight: 136 kDa.
IP		Use at 2-10 µg/mg of lysate.

靶标

功能	Probably plays a role in the formation and regulation of the tight junction (TJ) paracellular permeability barrier.
组织特异性	Localized on the cytoplasmic face of tight junctions of polarized epithelia and some endothelia. Expressed in pancreas, kidney, liver and lung, but not in skeletal muscle, placenta, brain or heart.
序列相似性	Belongs to the cingulin family.
结构域	Deletion of the ZO-1 interaction motif (ZIM) decreases but does not abolish colocalization with ZO-1.
细胞定位	Cell junction > tight junction. Localizes to the apical junction complex composed of tight and adherens junctions.

图片



All lanes : Anti-Cingulin antibody (ab117796) at 0.1 µg/ml

Lane 1 : 293T whole cell lysate at 50 µg/ml

Lane 2 : 293T whole cell lysate at 15 µg/ml

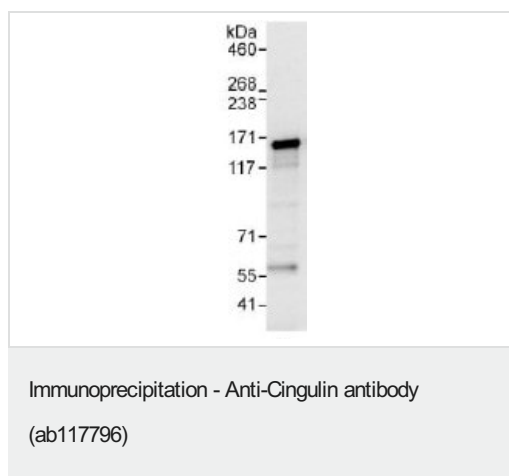
Lane 3 : Jurkat whole cell lysate at 50 µg/ml

Lane 4 : HeLa whole cell lysate at 50 µg/ml

Developed using the ECL technique.

Predicted band size: 136 kDa

Exposure time: 10 seconds



ab117796 at 1 µg/ml staining Cingulin in 293T cell lysate
immunoprecipitated using ab117796 at 6 µg/mg lysate (1 mg/IP;
20% of IP loaded/lane). Detection: Chemiluminescence with
exposure time of 3 seconds

Please note: All products are "FOR RESEARCH USE ONLY. NOT FOR USE IN DIAGNOSTIC PROCEDURES"

Our Abpromise to you: Quality guaranteed and expert technical support

- Replacement or refund for products not performing as stated on the datasheet
- Valid for 12 months from date of delivery
- Response to your inquiry within 24 hours
- We provide support in Chinese, English, French, German, Japanese and Spanish
- Extensive multi-media technical resources to help you
- We investigate all quality concerns to ensure our products perform to the highest standards

If the product does not perform as described on this datasheet, we will offer a refund or replacement. For full details of the Abpromise, please visit <https://www.abcam.cn/abpromise> or contact our technical team.

Terms and conditions

- Guarantee only valid for products bought direct from Abcam or one of our authorized distributors