

Anti-CIDE B antibody ab196595

3 图像

概述

产品名称	Anti-CIDE B抗体
描述	兔多克隆抗体to CIDE B
宿主	Rabbit
经测试应用	适用于: WB, ICC/IF, IHC-P
种属反应性	与反应: Mouse, Human, African green monkey
免疫原	Synthetic peptide within Human CIDE B (internal sequence). The exact sequence is proprietary. Database link: Q9UHD4
阳性对照	Cos7 cells, RAW264.7 or HT29 cell extracts, Human cervix carcinoma tissue
常规说明	<p>The Life Science industry has been in the grips of a reproducibility crisis for a number of years. Abcam is leading the way in addressing this with our range of recombinant monoclonal antibodies and knockout edited cell lines for gold-standard validation. Please check that this product meets your needs before purchasing.</p> <p>If you have any questions, special requirements or concerns, please send us an inquiry and/or contact our Support team ahead of purchase. Recommended alternatives for this product can be found below, along with publications, customer reviews and Q&As</p>

性能

形式	Liquid
存放说明	Shipped at 4°C. Store at +4°C short term (1-2 weeks). Upon delivery aliquot. Store at -20°C long term. Avoid freeze / thaw cycle.
存储溶液	<p>pH: 7.40</p> <p>Preservative: 0.02% Sodium azide</p> <p>Constituents: 49% PBS, 0.87% Sodium chloride, 50% Glycerol (glycerin, glycerine)</p>
纯度	without Mg ²⁺ and Ca ²⁺
克隆	Immunogen affinity purified
同种型	多克隆
	IgG

应用

The Abpromise guarantee **Abpromise™**承诺保证使用ab196595于以下的经测试应用

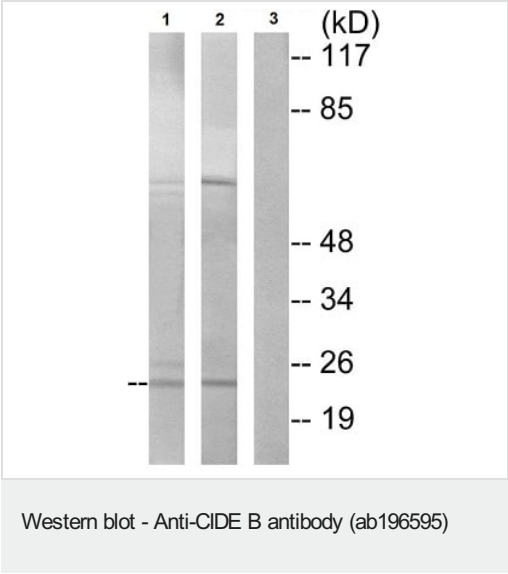
“应用说明”部分 下显示的仅为推荐的起始稀释度;实际最佳的稀释度/浓度应由使用者检定。

应用	Ab评论	说明
WB		1/500 - 1/3000. Predicted molecular weight: 25 kDa.
ICC/IF		1/100 - 1/500.
IHC-P		1/50 - 1/100.

靶标

功能	Activates apoptosis.
组织特异性	Highly expressed in liver and small intestine and, at lower levels, in colon, kidney and spleen.
序列相似性	Contains 1 CIDE-N domain.

图片



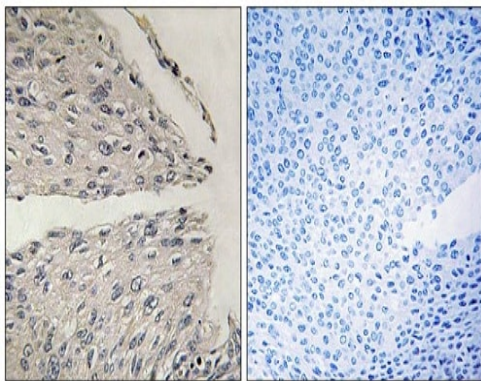
All lanes : Anti-CIDE B antibody (ab196595) at 1/500 dilution

Lane 1 : RAW264.7 cell extracts

Lane 2 : HT29 cell extracts

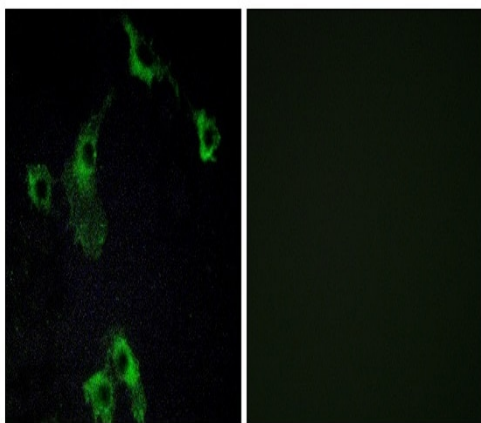
Lane 3 : HT29 cell extracts with synthetic peptide

Predicted band size: 25 kDa



Immunohistochemistry analysis of paraffin-embedded Human cervix carcinoma tissue labelling CIDE B using ab196595 at 1/50 dilution. Right image: negative control.

Immunohistochemistry (Formalin/PFA-fixed paraffin-embedded sections) - Anti-CIDE B antibody (ab196595)



Immunofluorescence analysis of COS-7 (African green monkey kidney fibroblast-like cell line) cells labelling CIDE B using ab196595 at 1/100 dilution. Right image: negative control.

Immunocytochemistry/ Immunofluorescence - Anti-CIDE B antibody (ab196595)

Please note: All products are "FOR RESEARCH USE ONLY. NOT FOR USE IN DIAGNOSTIC PROCEDURES"

Our Abpromise to you: Quality guaranteed and expert technical support

- Replacement or refund for products not performing as stated on the datasheet
- Valid for 12 months from date of delivery
- Response to your inquiry within 24 hours
- We provide support in Chinese, English, French, German, Japanese and Spanish
- Extensive multi-media technical resources to help you
- We investigate all quality concerns to ensure our products perform to the highest standards

If the product does not perform as described on this datasheet, we will offer a refund or replacement. For full details of the Abpromise, please visit <https://www.abcam.cn/abpromise> or contact our technical team.

Terms and conditions

-
- Guarantee only valid for products bought direct from Abcam or one of our authorized distributors