

Anti-CID antibody ab10887

★★★★☆ [2 Abreviews](#) [13 References](#) [2 图像](#)

概述

产品名称	Anti-CID抗体
描述	兔多克隆抗体to CID
宿主	Rabbit
经测试应用	适用于: WB, ICC/IF
种属反应性	与反应: Drosophila melanogaster
免疫原	Synthetic peptide. This information is proprietary to Abcam and/or its suppliers.
阳性对照	Drosophila Embryo Lysate;
常规说明	<p>The Life Science industry has been in the grips of a reproducibility crisis for a number of years. Abcam is leading the way in addressing this with our range of recombinant monoclonal antibodies and knockout edited cell lines for gold-standard validation. Please check that this product meets your needs before purchasing.</p> <p>If you have any questions, special requirements or concerns, please send us an inquiry and/or contact our Support team ahead of purchase. Recommended alternatives for this product can be found below, along with publications, customer reviews and Q&As</p>

性能

形式	Liquid
存放说明	Shipped at 4°C. Store at +4°C short term (1-2 weeks). Upon delivery aliquot. Store at -20°C or -80°C. Avoid freeze / thaw cycle.
存储溶液	<p>pH: 7.40</p> <p>Preservative: 0.02% Sodium azide</p> <p>Constituent: PBS</p> <p>Batches of this product that have a concentration < 1mg/ml may have BSA added as a stabilising agent. If you would like information about the formulation of a specific lot, please contact our scientific support team who will be happy to help.</p>
纯度	Immunogen affinity purified
克隆	多克隆
同种型	IgG

应用

The Abpromise guarantee **Abpromise™**承诺保证使用ab10887于以下的经测试应用

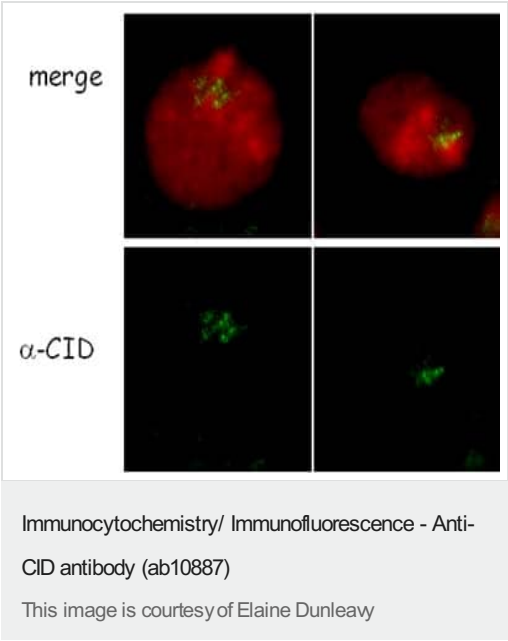
“应用说明”部分 下显示的仅为推荐的起始稀释度;实际最佳的稀释度/浓度应由使用者检定。

应用	Ab评论	说明
WB		1/500 - 1/1000. Detects a band of approximately 32 kDa (predicted molecular weight: 26 kDa).
ICC/IF		1/100.

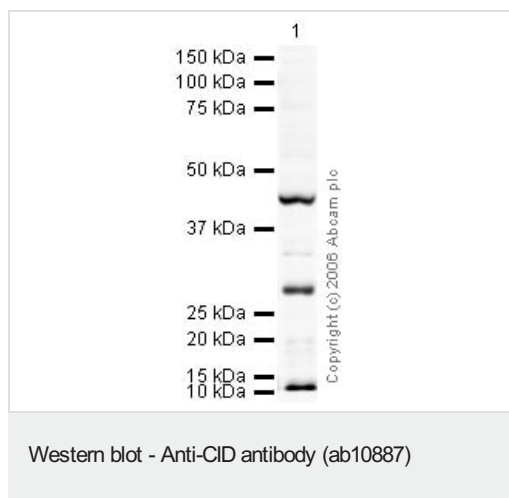
靶标

功能	Histone H3-like variant which exclusively replaces conventional H3 in the nucleosome core of centromeric chromatin at the inner plate of the kinetochore. Required for recruitment and assembly of kinetochore proteins, mitotic progression and chromosome segregation. May serve as an epigenetic mark that propagates centromere identity through replication and cell division.
序列相似性	Belongs to the histone H3 family.
细胞定位	Nucleus. Chromosome, centromere, kinetochore. Localizes exclusively in the kinetochore domain of centromeres. Co-expressed with yemalpha.

图片



Drosophila S2 cells treated with ab10887 at 1:100 dilution and fixed with 3% PFA for 3 mins. Red = DAPI Green = ab10887



Anti-CID antibody (ab10887) at 1 µg/ml + Drosophila embryo nuclear extract (from melanogaster embryos 0-12Hr) (**ab27258**) at 20 µg

Secondary

Goat polyclonal to Rabbit IgG H&L (HRP) Pre-Adsorbed at 1/10000 dilution

Performed under reducing conditions.

Predicted band size: 26 kDa

Observed band size: 26 kDa

Additional bands at: 12 kDa (possible non-specific binding), 42 kDa (possible non-specific binding)

Please note: All products are "FOR RESEARCH USE ONLY. NOT FOR USE IN DIAGNOSTIC PROCEDURES"

Our Abpromise to you: Quality guaranteed and expert technical support

- Replacement or refund for products not performing as stated on the datasheet
- Valid for 12 months from date of delivery
- Response to your inquiry within 24 hours
- We provide support in Chinese, English, French, German, Japanese and Spanish
- Extensive multi-media technical resources to help you
- We investigate all quality concerns to ensure our products perform to the highest standards

If the product does not perform as described on this datasheet, we will offer a refund or replacement. For full details of the Abpromise, please visit <https://www.abcam.cn/abpromise> or contact our technical team.

Terms and conditions

- Guarantee only valid for products bought direct from Abcam or one of our authorized distributors