

Anti-clAP1 antibody [EPR4673] ab108361

敲除验证 重组 RabMAb

24 References 7 图像

| | |
|-------|---|
| 概述 | |
| 产品名称 | Anti-clAP1抗体[EPR4673] |
| 描述 | 兔单克隆抗体[EPR4673] to clAP1 |
| 宿主 | Rabbit |
| 经测试应用 | 适用于: WB, IHC-P 不适用于: Flow Cyt, ICC/IF or IP |
| 种属反应性 | 与反应: Human |
| 免疫原 | Synthetic peptide. This information is proprietary to Abcam and/or its suppliers. |
| 阳性对照 | WB: Jurkat, HeLa, HT-29, and HepG2 whole cell lysate (ab7900) IHC-P: Human spleen tissue |
| 常规说明 | <p>This product is a recombinant monoclonal antibody, which offers several advantages including:</p> <ul style="list-style-type: none">- High batch-to-batch consistency and reproducibility- Improved sensitivity and specificity- Long-term security of supply- Animal-free production <p>For more information see here.</p> <p>Our RabMAb[®] technology is a patented hybridoma-based technology for making rabbit monoclonal antibodies. For details on our patents, please refer to RabMAb[®] patents.</p> <p>Mouse, Rat: We have preliminary internal testing data to indicate this antibody may not react with these species. Please contact us for more information.</p> |
| 性能 | |
| 形式 | Liquid |
| 存放说明 | Shipped at 4°C. Store at -20°C. Stable for 12 months at -20°C. |
| 存储溶液 | pH: 7.20 Preservative: 0.01% Sodium azide Constituents: 40% Glycerol, PBS, 0.05% BSA |
| 纯度 | Protein A purified |
| 克隆 | 单克隆 |
| 克隆编号 | EPR4673 |

同种型

lgG

应用

The Abpromise guarantee

Abpromise™承诺保证使用ab108361于以下的经测试应用

“应用说明”部分 下显示的仅为推荐的起始稀释度;实际最佳的稀释度/浓度应由使用者检定。

| 应用 | Ab评论 | 说明 |
|-------|------|---|
| WB | | 1/1000 - 1/10000. Detects a band of approximately 70 kDa (predicted molecular weight: 70 kDa). |
| IHC-P | | 1/500. Perform heat mediated antigen retrieval with citrate buffer pH 6 before commencing with IHC staining protocol. For purification use at 1/50 - 1/100 |

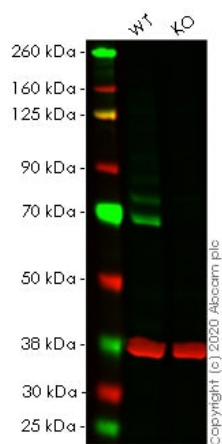
应用说明

Is unsuitable for Flow Cyt,ICC/IF or IP.

靶标

| | |
|-------|---|
| 功能 | Apoptotic suppressor. The BIR motifs region interacts with TNF receptor associated factors 1 and 2 (TRAF1 and TRAF2) to form an heteromeric complex, which is then recruited to the tumor necrosis factor receptor 2 (TNFR2). |
| 组织特异性 | Present in many fetal and adult tissues. Mainly expressed in adult skeletal muscle, thymus, testis, ovary, and pancreas, low or absent in brain and peripheral blood leukocytes. |
| 序列相似性 | Belongs to the IAP family. Contains 3 BIR repeats. Contains 1 CARD domain. Contains 1 RING-type zinc finger. |
| 细胞定位 | Cytoplasm. |

图片



Western blot - Anti-cIAP1 antibody [EPR4673]
(ab108361)

All lanes : Anti-cIAP1 antibody [EPR4673] (ab108361) at 1/1000 dilution

Lane 1 : Wild-type HeLa cell lysate

Lane 2 : BIRC2 knockout HeLa cell lysate

Lysates/proteins at 20 µg per lane.

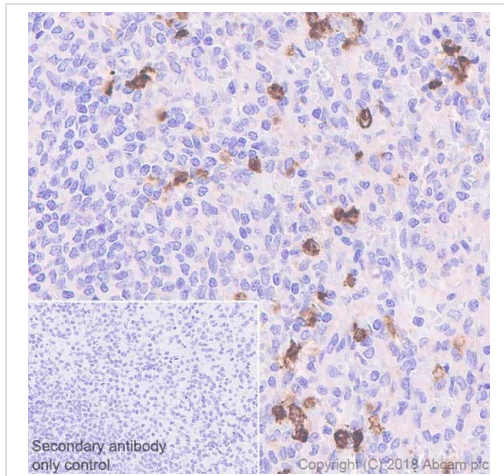
Performed under reducing conditions.

Predicted band size: 70 kDa

Observed band size: 70 kDa

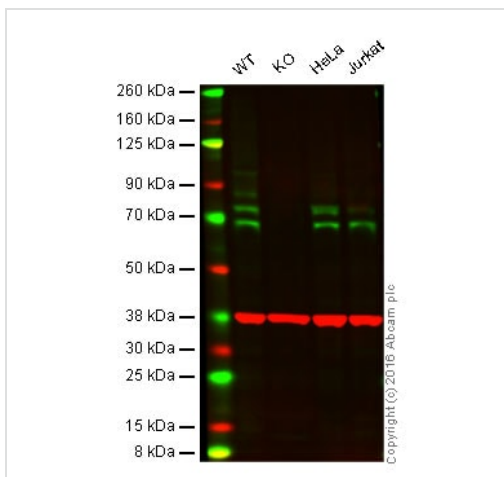
Lanes 1- 2: Merged signal (red and green). Green - ab108361 observed at 70 kDa. Red - Anti-GAPDH antibody [6C5] - Loading Control ([ab8245](#)) observed at 37 kDa.

ab108361 was shown to react with cIAP1 in wild-type HeLa cells in western blot. Loss of signal was observed when knockout cell line [ab265896](#) (knockout cell lysate [ab257372](#)) was used. Wild-type HeLa and BIRC2 knockout HeLa cell lysates were subjected to SDS-PAGE. Membrane was blocked for 1 hour at room temperature in 0.1% TBST with 3% non-fat dried milk. ab108361 and Anti-GAPDH antibody [6C5] - Loading Control ([ab8245](#)) were incubated overnight at 4°C at a 1 in 1000 dilution and a 1 in 20000 dilution respectively. Blots were developed with Goat anti-Rabbit IgG H&L (IRDye®800CW) preadsorbed ([ab216773](#)) and Goat anti-Mouse IgG H&L (IRDye®680RD) preadsorbed ([ab216776](#)) secondary antibodies at 1 in 20000 dilution for 1 hour at room temperature before imaging.



Immunohistochemistry (Formalin/PFA-fixed paraffin-embedded sections) - Anti-clAP1 antibody [EPR4673] (ab108361)

Immunohistochemistry (Formalin/PFA-fixed paraffin-embedded sections) analysis of Human spleen tissue sections labeling clAP1 with Purified ab108361 at 1:500 dilution (2.82 µg/ml). Heat mediated antigen retrieval was performed using [ab93684](#) (Tris/EDTA buffer, pH 9.0). ImmunoHistoProbe one step HRP Polymer (ready to use) was used. Negative control: PBS instead of the primary antibody. Hematoxylin was used as a counterstain.



Western blot - Anti-clAP1 antibody [EPR4673] (ab108361)

Lane 1: Wild-type HAP1 cell lysate (20 µg)

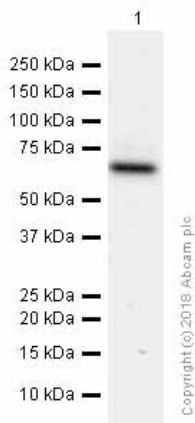
Lane 2: clAP1 knockout HAP1 cell lysate (20 µg)

Lane 3: HeLa cell lysate (20 µg)

Lane 4: Jurkat cell lysate (20 µg)

Lanes 1 - 4: Merged signal (red and green). Green - ab108361 observed at 70 kDa. Red - loading control, [ab8245](#), observed at 37 kDa.

ab108361 was shown to specifically react with clAP1 when clAP1 knockout samples were used. Wild-type and clAP1 knockout samples were subjected to SDS-PAGE. Ab108361 and [ab8245](#) (loading control to GAPDH) were diluted at 1/1000 and 1/10,000 dilution respectively and incubated overnight at 4°C. Blots were developed with Goat anti-Rabbit IgG H&L (IRDye® 800CW) preadsorbed ([ab216773](#)) and Goat anti-Mouse IgG H&L (IRDye® 680RD) preadsorbed ([ab216776](#)) secondary antibodies at 1/10,000 dilution for 1 hour at room temperature before imaging.



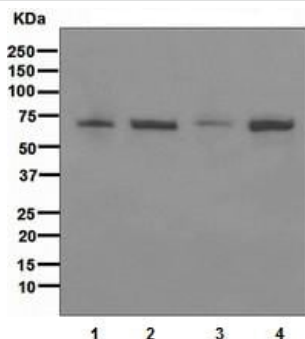
Western blot - Anti-clAP1 antibody [EPR4673]
(ab108361)

Anti-clAP1 antibody [EPR4673] (ab108361) at 1/2000 dilution
(purified) + HepG2 (Human hepatocellular carcinoma epithelial cell)
whole cell lysates at 1/15 dilution

Secondary

Goat Anti-Rabbit IgG H&L (HRP) ([ab97051](#)) at 1/200000 dilution

Predicted band size: 70 kDa



Western blot - Anti-clAP1 antibody [EPR4673]
(ab108361)

All lanes : Anti-clAP1 antibody [EPR4673] (ab108361) at 1/1000 dilution

Lane 1 : Jurkat cell lysate

Lane 2 : HeLa cell lysate

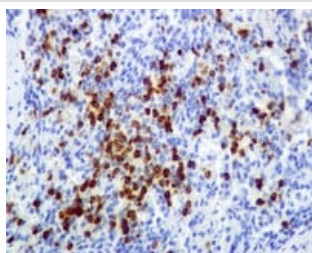
Lane 3 : HT29 cell lysate

Lane 4 : HepG2 cell lysate

Lysates/proteins at 10 µg per lane.

Predicted band size: 70 kDa

Observed band size: 70 kDa



Immunohistochemistry (Formalin/PFA-fixed paraffin-
embedded sections) - Anti-clAP1 antibody
[EPR4673] (ab108361)

ab108361, at 1/50, staining clAP1 in paraffin-embedded Human spleen tissue by Immunohistochemistry.

Perform heat mediated antigen retrieval with citrate buffer pH 6 before commencing with IHC staining protocol.

Why choose a recombinant antibody?



Research with confidence
Consistent and reproducible results



Long-term and scalable supply
Recombinant technology



Success from the first experiment
Confirmed specificity



Ethical standards compliant
Animal-free production

Anti-clAP1 antibody [EPR4673] (ab108361)

Please note: All products are "FOR RESEARCH USE ONLY. NOT FOR USE IN DIAGNOSTIC PROCEDURES"

Our Abpromise to you: Quality guaranteed and expert technical support

- Replacement or refund for products not performing as stated on the datasheet
- Valid for 12 months from date of delivery
- Response to your inquiry within 24 hours
- We provide support in Chinese, English, French, German, Japanese and Spanish
- Extensive multi-media technical resources to help you
- We investigate all quality concerns to ensure our products perform to the highest standards

If the product does not perform as described on this datasheet, we will offer a refund or replacement. For full details of the Abpromise, please visit <https://www.abcam.cn/abpromise> or contact our technical team.

Terms and conditions

- Guarantee only valid for products bought direct from Abcam or one of our authorized distributors