


# Anti-CHSS2 antibody ab75052

**1 References**   **3 图像**

### 概述

产品名称	Anti-CHSS2抗体
描述	兔多克隆抗体to CHSS2
宿主	Rabbit
经测试应用	适用于: WB, IHC-P, ICC/IF
种属反应性	与反应: Human 预测可用于: Mouse, Rat 
免疫原	A synthesized peptide derived from the internal region of human CHSS2.
阳性对照	IHC-P: Human cervix carcinoma tissue. WB: MCF-7 cells and extracts from LOVO cells and K562 cells.
常规说明	<p>The Life Science industry has been in the grips of a reproducibility crisis for a number of years. Abcam is leading the way in addressing this with our range of recombinant monoclonal antibodies and knockout edited cell lines for gold-standard validation. Please check that this product meets your needs before purchasing.</p> <p>If you have any questions, special requirements or concerns, please send us an inquiry and/or contact our Support team ahead of purchase. Recommended alternatives for this product can be found below, along with publications, customer reviews and Q&amp;As</p>

### 性能

形式	Liquid
存放说明	Shipped at 4°C. Upon delivery aliquot and store at -20°C. Avoid freeze / thaw cycles.
存储溶液	pH: 7.40 Preservative: 0.02% Sodium azide Constituents: 50% Glycerol (glycerin, glycerine), 0.87% Sodium chloride, PBS
纯度	Without Mg <sup>2+</sup> and Ca <sup>2+</sup> Immunogen affinity purified
纯化说明	The antibody was affinity purified from rabbit antiserum by affinity chromatography using epitope specific immunogen.
克隆	多克隆

同种型IgG

应用

The Abpromise guarantee      **Abpromise™**承诺保证使用ab75052于以下的经测试应用

“应用说明”部分 下显示的仅为推荐的起始稀释度;实际最佳的稀释度/浓度应由使用者检定。

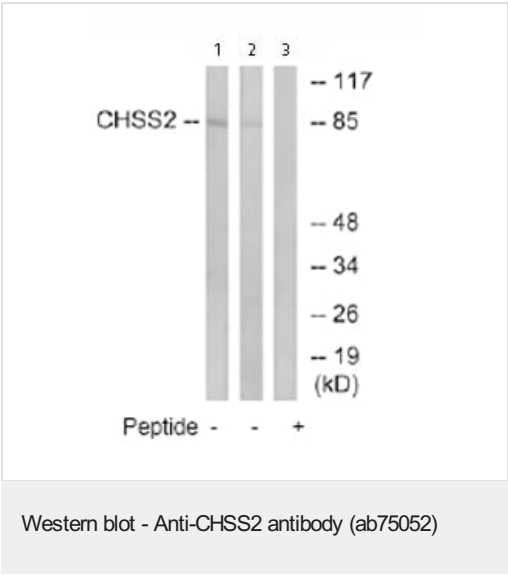
应用	Ab评论	说明
WB		1/500 - 1/1000. Predicted molecular weight: 85 kDa.
IHC-P		1/50 - 1/100.
ICC/IF		1/500 - 1/1000.

靶标

**相关性**      CHSS2 belongs to the chondroitin N-acetylgalactosaminyltransferase family. It has both beta-1,3-glucuronic acid and beta-1,4-N-acetylgalactosamine transferase activity and transfers glucuronic acid (GlcUA) from UDP-GlcUA and N-acetylgalactosamine (GalNAc) from UDP-GalNAc to the non-reducing end of the elongating chondroitin polymer. CHSS2 is ubiquitous; highly expressed in pancreas, ovary, brain, heart, skeletal muscle, colon, kidney, liver, stomach, small intestine and placenta.

**细胞定位**      Golgi apparatus, golgi stack membrane; Single pass type II membrane protein.

图片



**All lanes :** Anti-CHSS2 antibody (ab75052) at 1/500 dilution

**Lane 1 :** Extracts from LOVO cells

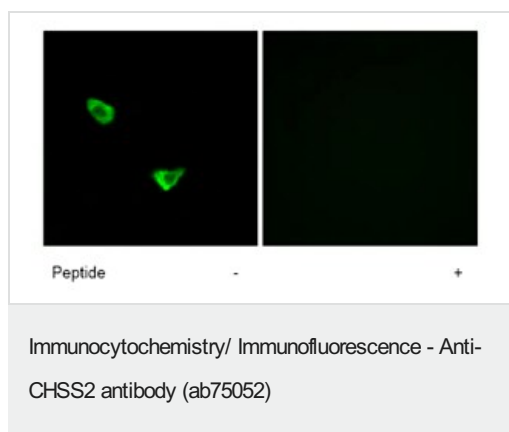
**Lane 2 :** Extracts from K562 cells

**Lane 3 :** Extracts from LOVO cells plus 5µg immunizing peptide

Lysates/proteins at 5 µg per lane.

**Predicted band size:** 85 kDa

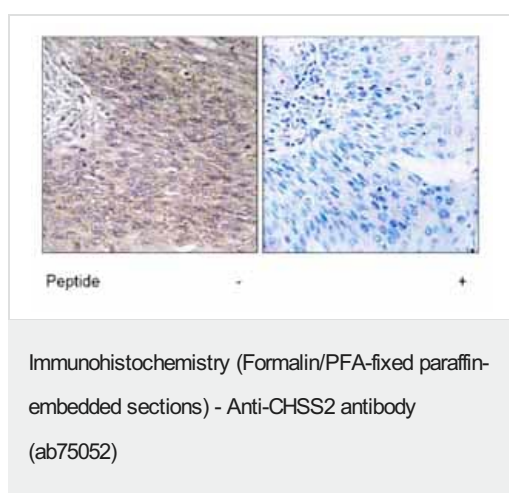
**Observed band size:** 85 kDa



Immunofluorescence analysis of CHSS2 in MCF-7 cells, using ab75052 at a 1/500 dilution.

Left image: untreated.

Right image: treated with immunizing peptide.



Immunohistochemical analysis of CHSS2 in paraffin embedded human cervix carcinoma tissue, using ab75052 at a 1/50 dilution.

Left image: untreated.

Right image: treated with immunizing peptide.

**Please note:** All products are "FOR RESEARCH USE ONLY. NOT FOR USE IN DIAGNOSTIC PROCEDURES"

### Our Abpromise to you: Quality guaranteed and expert technical support

- Replacement or refund for products not performing as stated on the datasheet
- Valid for 12 months from date of delivery
- Response to your inquiry within 24 hours
- We provide support in Chinese, English, French, German, Japanese and Spanish
- Extensive multi-media technical resources to help you
- We investigate all quality concerns to ensure our products perform to the highest standards

If the product does not perform as described on this datasheet, we will offer a refund or replacement. For full details of the Abpromise, please visit <https://www.abcam.cn/abpromise> or contact our technical team.

### Terms and conditions

- Guarantee only valid for products bought direct from Abcam or one of our authorized distributors