


Anti-CHRAC-17 antibody ab74308

1 References **3 图像**

概述

产品名称	Anti-CHRAC-17抗体
描述	兔多克隆抗体to CHRAC-17
宿主	Rabbit
经测试应用	适用于: WB, IP, IHC-P
种属反应性	与反应: Mouse, Human 预测可用于: Rat, Guinea pig, Cow, Chimpanzee, Rhesus monkey, Gorilla, Chinese hamster, Orangutan, Bat 
免疫原	Synthetic peptide within Human CHRAC-17 aa 97-147. The exact sequence is proprietary. NP_059139.2
阳性对照	WB: Lysate from HeLa or HEK-293T cells.
常规说明	<p>The Life Science industry has been in the grips of a reproducibility crisis for a number of years. Abcam is leading the way in addressing this with our range of recombinant monoclonal antibodies and knockout edited cell lines for gold-standard validation. Please check that this product meets your needs before purchasing.</p> <p>If you have any questions, special requirements or concerns, please send us an inquiry and/or contact our Support team ahead of purchase. Recommended alternatives for this product can be found below, along with publications, customer reviews and Q&As</p>

性能

形式	Liquid
存放说明	Shipped at 4°C. Upon delivery aliquot and store at -20°C. Avoid freeze / thaw cycles.
存储溶液	pH: 7 Preservative: 0.09% Sodium azide Constituents: 1.815% Tris, 1.764% Sodium citrate, 0.021% PBS
纯度	Immunogen affinity purified
克隆	多克隆
同种型	IgG

应用

The Abpromise guarantee

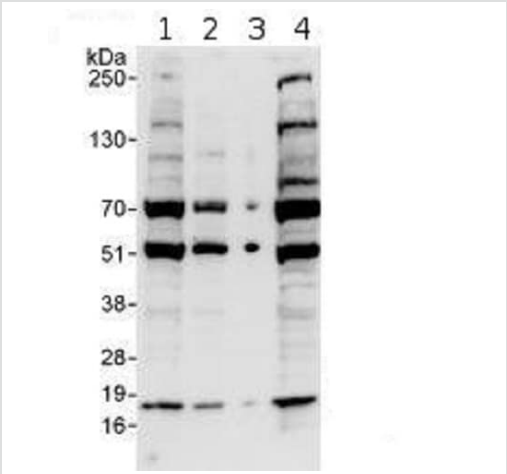
Abpromise™承诺保证使用ab74308于以下的经测试应用

“应用说明”部分 下显示的仅为推荐的起始稀释度;实际最佳的稀释度/浓度应由使用者检定。

应用	Ab评论	说明
WB		1/2000 - 1/10000. Predicted molecular weight: 16 kDa.
IP		Use at 2-5 µg/mg of lysate.
IHC-P		1/1000 - 1/5000. Perform heat mediated antigen retrieval with citrate buffer pH 6 before commencing with IHC staining protocol.

靶标	
功能	Forms a complex with DNA polymerase epsilon subunit CHRAC1 and binds naked DNA, which is then incorporated into chromatin, aided by the nucleosome-remodeling activity of ISWI/SNF2H and ACF1.
组织特异性	Expressed in all tissues tested, including, heart, brain, placenta, lung, liver, skeletal muscle, kidney and pancreas.
细胞定位	Nucleus.

图片



Western blot - Anti-CHRAC-17 antibody (ab74308)

All lanes : Anti-CHRAC-17 antibody (ab74308) at 0.4 µg/ml

Lane 1 : Whole cell lysate from HeLa cells at 50 µg

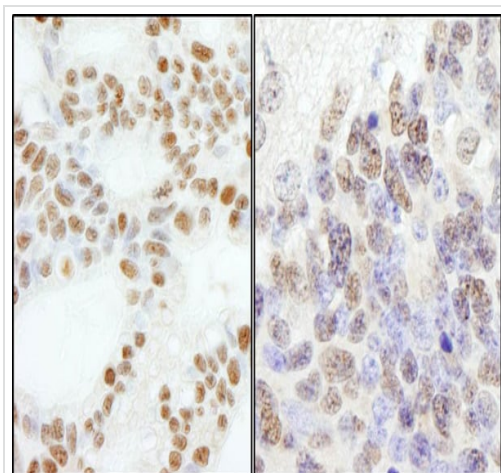
Lane 2 : Whole cell lysate from HeLa cells at 15 µg

Lane 3 : Whole cell lysate from HeLa cells at 5 µg

Lane 4 : Whole cell lysate from HEK-293T cells at 50 µg

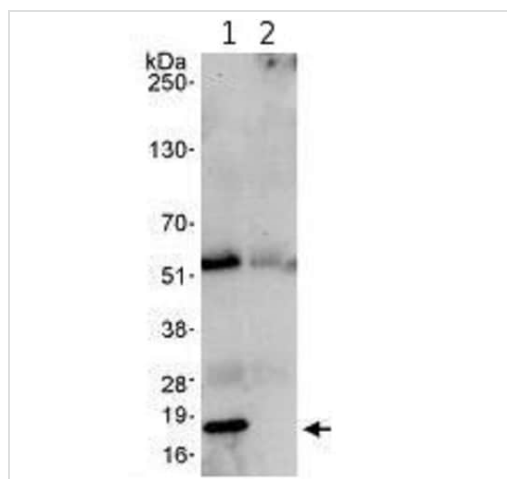
Predicted band size: 16 kDa

Observed band size: 18 kDa



Immunohistochemistry (Formalin/PFA-fixed paraffin-embedded sections) analysis of human ovarian carcinoma (left) and mouse teratoma (right) tissues labeling CHRAC-17 with ab74308 at 1/5000 (0.2 µg/ml). Detection: DAB.

Immunohistochemistry (Formalin/PFA-fixed paraffin-embedded sections) - Anti-CHRAC-17 antibody (ab74308)



Detection of human CHRAC-17 by immunoprecipitation of 1mg HeLa cells whole lysate, using ab74308 at 3µg/mg lysate (lane 1, 20% IP loaded) or a control IgG (lane 2, 20% IP loaded). The post-IP WB was performed using ab74308 at 1 µg/ml.

Detection: chemiluminescence with an exposure time of 30 seconds.

Immunoprecipitation - Anti-CHRAC-17 antibody (ab74308)

Please note: All products are "FOR RESEARCH USE ONLY. NOT FOR USE IN DIAGNOSTIC PROCEDURES"

Our Abpromise to you: Quality guaranteed and expert technical support

- Replacement or refund for products not performing as stated on the datasheet
- Valid for 12 months from date of delivery

- Response to your inquiry within 24 hours
- We provide support in Chinese, English, French, German, Japanese and Spanish
- Extensive multi-media technical resources to help you
- We investigate all quality concerns to ensure our products perform to the highest standards

If the product does not perform as described on this datasheet, we will offer a refund or replacement. For full details of the Abpromise, please visit <https://www.abcam.cn/abpromise> or contact our technical team.

Terms and conditions

- Guarantee only valid for products bought direct from Abcam or one of our authorized distributors