

Anti-Chp1 antibody ab18191

★★★★★ [1 Abreviews](#) [14 References](#) [3 图像](#)

概述

产品名称	Anti-Chp1抗体
描述	兔多克隆抗体to Chp1
宿主	Rabbit
经测试应用	适用于: ChIP, WB
种属反应性	与反应: Schizosaccharomyces pombe
免疫原	Synthetic peptide. This information is proprietary to Abcam and/or its suppliers.
阳性对照	This antibody gave a positive signal in S. pombe whole cell lysate.
常规说明	<p>The Life Science industry has been in the grips of a reproducibility crisis for a number of years. Abcam is leading the way in addressing this with our range of recombinant monoclonal antibodies and knockout edited cell lines for gold-standard validation. Please check that this product meets your needs before purchasing.</p> <p>If you have any questions, special requirements or concerns, please send us an inquiry and/or contact our Support team ahead of purchase. Recommended alternatives for this product can be found below, along with publications, customer reviews and Q&As</p>

性能

形式	Liquid
存放说明	Shipped at 4°C. Store at +4°C short term (1-2 weeks). Upon delivery aliquot. Store at -20°C or -80°C. Avoid freeze / thaw cycle.
存储溶液	<p>pH: 7.40</p> <p>Preservative: 0.02% Sodium azide</p> <p>Constituent: PBS</p> <p>Batches of this product that have a concentration < 1mg/ml may have BSA added as a stabilising agent. If you would like information about the formulation of a specific lot, please contact our scientific support team who will be happy to help.</p>
纯度	Immunogen affinity purified
克隆	多克隆
同种型	IgG

应用

The Abpromise guarantee **Abpromise™**承诺保证使用ab18191于以下的经测试应用

“应用说明”部分 下显示的仅为推荐的起始稀释度;实际最佳的稀释度/浓度应由使用者检定。

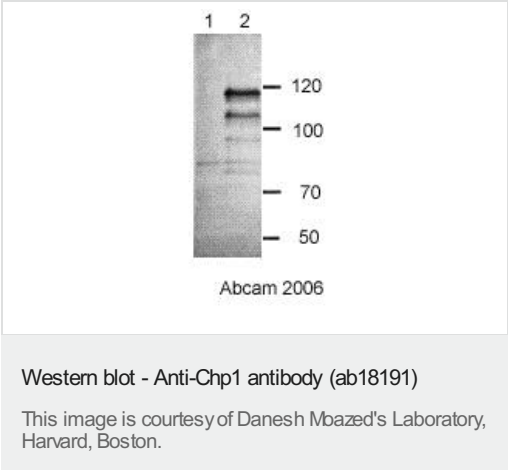
应用	Ab评论	说明
ChIP	★★★★★ (1)	Use 2.5µg for 10 ⁷ cells.
WB		Use a concentration of 1 µg/ml. Detects a band of approximately 109 kDa (predicted molecular weight: 109 kDa).

靶标

相关性 Chp1 a chromodomain protein associates with the *S. pombe* mating type locus and telomeres. Chp1 localization to heterochromatin depends on its chromodomain and the C-terminal domain of the protein. Chp1 and centromeric siRNAs are components of the RITS (RNA-induced initiation of transcriptional gene silencing) complex. The association of RITS with centromeres is linked to Dicer activity, which is required to cleave centromeric transcripts to produce short interfering RNAs that actively recruit components of heterochromatin to centromeres.

细胞定位 Nuclear

图片



All lanes : Anti-Chp1 antibody (ab18191) at 1 µg/ml

Lane 1 : *S. pombe chp1Δ* lysate

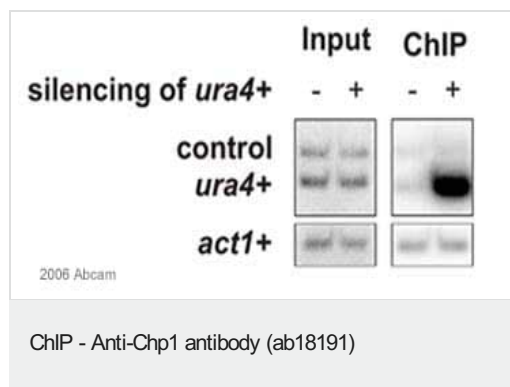
Lane 2 : *S. pombe* wildtype lysate

Predicted band size: 109 kDa

Observed band size: 109 kDa

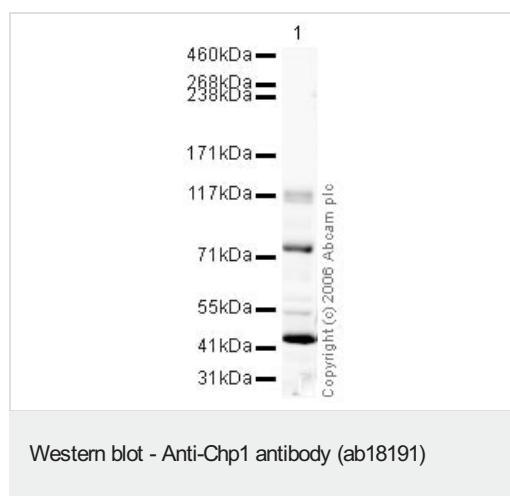
Additional bands at: 102 kDa (possible degradation product)

ab18191 specifically recognises Chp1 at 109 kDa in wildtype *S. pombe* lysate but not in *chp1Δ* lysate.



X-ChIP performed with ab18191 on *Schizosaccharomyces pombe* Cell lysate (whole cell). 5µl antibody were used per 500µl of chromatin/cell lysate according to standard *S. pombe* ChIP protocols. Protein-A Sepharose was used to recover the ChIPs. In the positive control the researcher specifically induced silencing of the *ura4+* gene. For the negative control the researcher performed multiplex PCR with primers amplifying *ura4+* and an un-silenced gene. In addition, *act1+* was amplified in a separate PCR reaction. Chp1 only binds to *ura4+* (and only if silencing is induced).

This image is courtesy of an Abreview submitted by **Marc B?** on **9 February 2006**



Anti-Chp1 antibody (ab18191) at 1 µg/ml + *S.pombe* Whole Cell Lysate at 20 µg

Secondary

Goat polyclonal to Rabbit IgG - H&L - Pre-Adsorbed (HRP) at 1/10000 dilution

Performed under reducing conditions.

Predicted band size: 109 kDa

Observed band size: 115,75 kDa

Additional bands at: 42 kDa. We are unsure as to the identity of these extra bands.

Please note: All products are "FOR RESEARCH USE ONLY. NOT FOR USE IN DIAGNOSTIC PROCEDURES"

Our Abpromise to you: Quality guaranteed and expert technical support

- Replacement or refund for products not performing as stated on the datasheet
- Valid for 12 months from date of delivery
- Response to your inquiry within 24 hours
- We provide support in Chinese, English, French, German, Japanese and Spanish
- Extensive multi-media technical resources to help you
- We investigate all quality concerns to ensure our products perform to the highest standards

If the product does not perform as described on this datasheet, we will offer a refund or replacement. For full details of the Abpromise, please visit <https://www.abcam.cn/abpromise> or contact our technical team.

Terms and conditions

- Guarantee only valid for products bought direct from Abcam or one of our authorized distributors