

Anti-Chk2 (phospho T383) antibody ab59408

★★★★★ [3 Abreviews](#) [11 References](#) [3 图像](#)

概述

产品名称	Anti-Chk2 (phospho T383)抗体
描述	兔多克隆抗体to Chk2 (phospho T383)
宿主	Rabbit
经测试应用	适用于: ELISA, ICC/IF, ICC, WB
种属反应性	与反应: Mouse, Rat, Human, African green monkey
免疫原	Synthetic peptide corresponding to Human Chk2 (phospho T383). (M-R-TP-L-C) Database link: O96017
阳性对照	WB: COS7 cell extracts, UV treated (30 mins). ICC: Human colon carcinoma cells.
常规说明	<p>The Life Science industry has been in the grips of a reproducibility crisis for a number of years. Abcam is leading the way in addressing this with our range of recombinant monoclonal antibodies and knockout edited cell lines for gold-standard validation. Please check that this product meets your needs before purchasing.</p> <p>If you have any questions, special requirements or concerns, please send us an inquiry and/or contact our Support team ahead of purchase. Recommended alternatives for this product can be found below, along with publications, customer reviews and Q&As</p>

性能

形式	Liquid
存放说明	Shipped at 4°C. Store at -20°C. Stable for 12 months at -20°C.
存储溶液	pH: 7 Preservative: 0.02% Sodium azide Constituents: PBS, 50% Glycerol (glycerin, glycerine), 0.87% Sodium chloride
纯度	Immunogen affinity purified
克隆	多克隆
同种型	IgG

应用

The Abpromise guarantee

Abpromise™ 承诺保证使用ab59408于以下的经测试应用

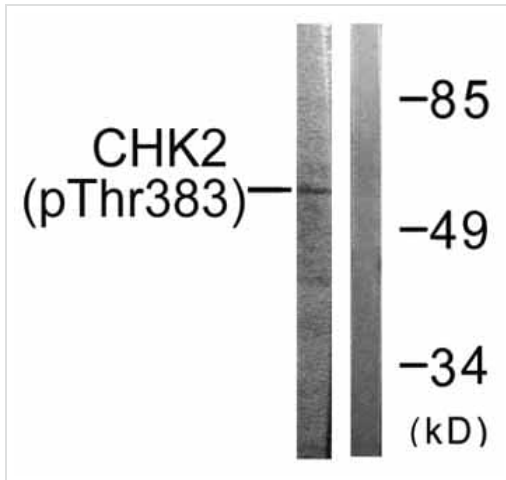
“应用说明”部分 下显示的仅为推荐的起始稀释度;实际最佳的稀释度/浓度应由使用者检定。

应用	Ab评论	说明
ELISA		Use at an assay dependent concentration.
ICC/IF	★★★★★ (1)	Use at an assay dependent concentration.
ICC		Use at an assay dependent concentration.
WB	★★★★★ (2)	1/500 - 1/1000. Detects a band of approximately 61 kDa (predicted molecular weight: 61 kDa).

靶标

功能	Regulates cell cycle checkpoints and apoptosis in response to DNA damage, particularly to DNA double-strand breaks. Inhibits CDC25C phosphatase by phosphorylation on 'Ser-216', preventing the entry into mitosis. May also play a role in meiosis. Regulates the TP53 tumor suppressor through phosphorylation at 'Thr-18' and 'Ser-20'.
组织特异性	High expression is found in testis, spleen, colon and peripheral blood leukocytes. Low expression is found in other tissues.
疾病相关	Defects in CHEK2 are associated with Li-Fraumeni syndrome 2 (LFS2) [MIM:609265]; a highly penetrant familial cancer phenotype usually associated with inherited mutations in p53/TP53. Defects in CHEK2 may be a cause of susceptibility to prostate cancer (PC) [MIM:176807]. It is a malignancy originating in tissues of the prostate. Most prostate cancers are adenocarcinomas that develop in the acini of the prostatic ducts. Other rare histopathologic types of prostate cancer that occur in approximately 5% of patients include small cell carcinoma, mucinous carcinoma, prostatic ductal carcinoma, transitional cell carcinoma, squamous cell carcinoma, basal cell carcinoma, adenoid cystic carcinoma (basaloid), signet-ring cell carcinoma and neuroendocrine carcinoma. Defects in CHEK2 are found in some patients with osteogenic sarcoma (OSRC) [MIM:259500].
序列相似性	Belongs to the protein kinase superfamily. CAMK Ser/Thr protein kinase family. CHK2 subfamily. Contains 1 FHA domain. Contains 1 protein kinase domain.
翻译后修饰	Phosphorylated by PLK4.
细胞定位	Nucleus; Nucleus. Isoform 10 is present throughout the cell and Nucleus > PML body. Nucleus > nucleoplasm. Recruited into PML bodies together with TP53.

图片



Western blot - Anti-Chk2 (phospho T383) antibody (ab59408)

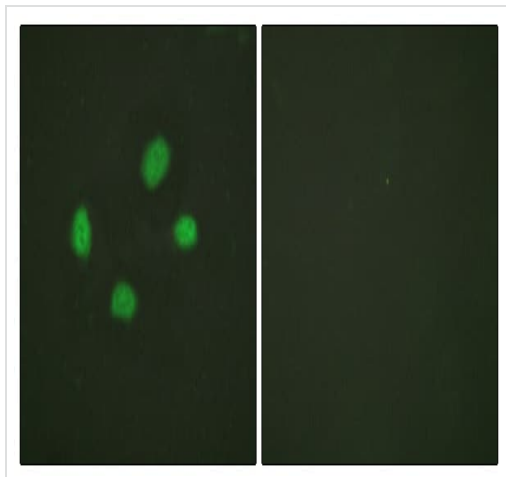
All lanes : Anti-Chk2 (phospho T383) antibody (ab59408) at 1/500 dilution

Lane 1 : COS7 cell extracts, UV treated (30 mins)

Lane 2 : COS7 cell extracts, UV treated (30 mins) with immunising phosphopeptide

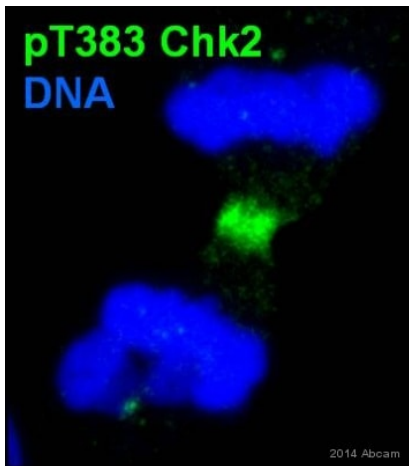
Predicted band size: 61 kDa

Observed band size: 61 kDa



Immunocytochemistry - Anti-Chk2 (phospho T383) antibody (ab59408)

HeLa (human epithelial cell line from cervix adenocarcinoma) cells stained for Chk2 (phospho T383) (green) using ab59408 at 1/100 dilution in ICC/IF, in the presence (right panel) or absence (left panel) of immunizing phosphopeptide.



Immunocytochemistry - Anti-Chk2 (phospho T383)
antibody (ab59408)

This image is courtesy of an Abreview submitted by
Eleni Petsalaki

ab59408 staining Chk2 (phospho T383) in human colon carcinoma cells by ICC/IF (Immunocytochemistry/immunofluorescence). Cells were fixed with paraformaldehyde, permeabilized with 0.5% Triton X-100 and blocked with 1% BSA for 30 minutes at 37°C. Samples were incubated with primary antibody (1/100 in PBS + 1% BSA) for 1 hour at 37°C. A FITC-conjugated goat anti-rabbit IgG polyclonal (1/100) was used as the secondary antibody.

Please note: All products are "FOR RESEARCH USE ONLY. NOT FOR USE IN DIAGNOSTIC PROCEDURES"

Our Abpromise to you: Quality guaranteed and expert technical support

- Replacement or refund for products not performing as stated on the datasheet
- Valid for 12 months from date of delivery
- Response to your inquiry within 24 hours
- We provide support in Chinese, English, French, German, Japanese and Spanish
- Extensive multi-media technical resources to help you
- We investigate all quality concerns to ensure our products perform to the highest standards

If the product does not perform as described on this datasheet, we will offer a refund or replacement. For full details of the Abpromise, please visit <https://www.abcam.cn/abpromise> or contact our technical team.

Terms and conditions

- Guarantee only valid for products bought direct from Abcam or one of our authorized distributors