

# Anti-Chk1 (phospho S345) antibody ab47318

★★★★☆ [2 Abreviews](#) [29 References](#) [1 图像](#)

### 概述

产品名称	Anti-Chk1 (phospho S345)抗体
描述	兔多克隆抗体to Chk1 (phospho S345)
宿主	Rabbit
经测试应用	适用于: IHC-P
种属反应性	与反应: Human
免疫原	Synthetic peptide corresponding to Human Chk1 aa 300-400 (phospho S345). Database link: <a href="#">O14757</a>

### 常规说明

Chk1 (phospho-Ser345) antibody detects endogenous levels of Chk1 only when phosphorylated at serine 345.

The Life Science industry has been in the grips of a reproducibility crisis for a number of years. Abcam is leading the way in addressing this with our range of recombinant monoclonal antibodies and knockout edited cell lines for gold-standard validation. Please check that this product meets your needs before purchasing.

If you have any questions, special requirements or concerns, please send us an inquiry and/or contact our Support team ahead of purchase. Recommended alternatives for this product can be found below, along with publications, customer reviews and Q&As

### 性能

形式	Liquid
存放说明	Shipped at 4°C. Store at -20°C. Stable for 12 months at -20°C.
存储溶液	pH: 7.40 Preservative: 0.02% Sodium azide Constituents: PBS, 50% Glycerol (glycerin, glycerine), 0.87% Sodium chloride
纯度	Immunogen affinity purified
纯化说明	The antibody was purified using epitope-specific phosphopeptide. The antibody against non-phosphopeptide was removed by chromatography using non-phosphopeptide corresponding to the phosphorylation site.
Primary antibody说明	Chk1 (phospho-Ser345) antibody detects endogenous levels of Chk1 only when phosphorylated at serine 345.

克隆 多克隆  
同种型 IgG

## 应用

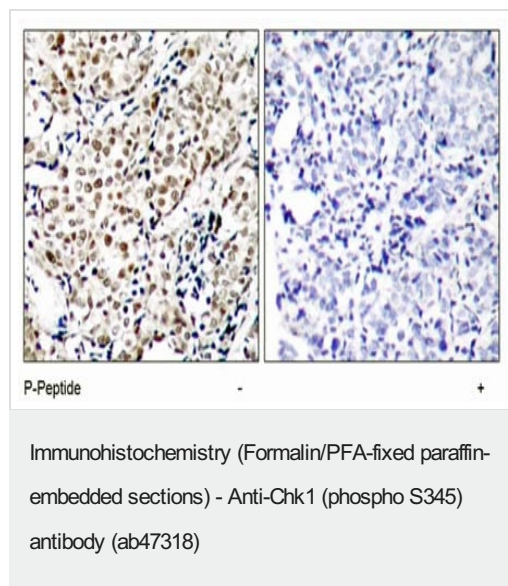
**The Abpromise guarantee** **Abpromise™**承诺保证使用ab47318于以下的经测试应用

“应用说明”部分 下显示的仅为推荐的起始稀释度;实际最佳的稀释度/浓度应由使用者检定。

应用	Ab评论	说明
IHC-P		1/50 - 1/100.

## 靶标

## 图片



ab47318 staining human breast carcinoma tissue by IHC-P (left hand panel). The right hand panel shows staining in the presence of phospho-peptide.

**Please note:** All products are "FOR RESEARCH USE ONLY. NOT FOR USE IN DIAGNOSTIC PROCEDURES"

## Our Abpromise to you: Quality guaranteed and expert technical support

- Replacement or refund for products not performing as stated on the datasheet
- Valid for 12 months from date of delivery
- Response to your inquiry within 24 hours
- We provide support in Chinese, English, French, German, Japanese and Spanish
- Extensive multi-media technical resources to help you
- We investigate all quality concerns to ensure our products perform to the highest standards

If the product does not perform as described on this datasheet, we will offer a refund or replacement. For full details of the Abpromise, please visit <https://www.abcam.cn/abpromise> or contact our technical team.

### **Terms and conditions**

---

- Guarantee only valid for products bought direct from Abcam or one of our authorized distributors