

Anti-Chk1 (phospho S296) antibody [EPR915] ab79758

重组 RabMAb

★★★★★ **1 Abreviews** **20 References** **3 图像**

概述

产品名称	Anti-Chk1 (phospho S296)抗体[EPR915]
描述	兔单克隆抗体[EPR915] to Chk1 (phospho S296)
宿主	Rabbit
经测试应用	适用于: WB 不适用于: ICC/IF or IHC-P
种属反应性	与反应: Human
免疫原	Synthetic peptide. This information is proprietary to Abcam and/or its suppliers.
阳性对照	283T cell lysate treated with UV and AP; HeLa cells.
常规说明	This product is a recombinant monoclonal antibody, which offers several advantages including: <ul style="list-style-type: none"> - High batch-to-batch consistency and reproducibility - Improved sensitivity and specificity - Long-term security of supply - Animal-free production For more information see here . Our RabMAb [®] technology is a patented hybridoma-based technology for making rabbit monoclonal antibodies. For details on our patents, please refer to RabMAb[®] patents . Mouse, Rat: We have preliminary internal testing data to indicate this antibody may not react with these species. Please contact us for more information.

性能

形式	Liquid
存放说明	Shipped at 4°C. Store at -20°C. Stable for 12 months at -20°C.
存储溶液	pH: 7.20 Preservative: 0.05% Sodium azide Constituents: 40% Glycerol (glycerin, glycerine), 0.1% BSA, 9.85% Tris glycine
纯度	Protein A purified
克隆	单克隆
克隆编号	EPR915

同种型IgG

应用

The Abpromise guarantee Abpromise™承诺保证使用ab79758于以下的经测试应用

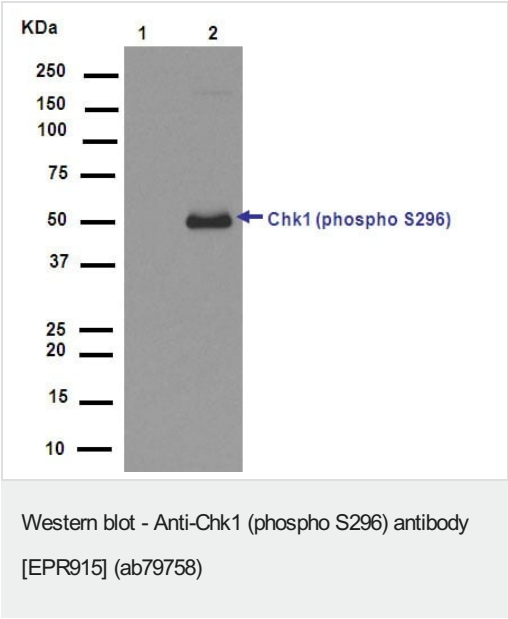
“应用说明”部分 下显示的仅为推荐的起始稀释度;实际最佳的稀释度/浓度应由使用者检定。

应用	Ab评论	说明
WB	★★★★★ (1)	1/1000. Detects a band of approximately 54 kDa (predicted molecular weight: 54 kDa). For unpurified use at 1/1000 - 1/2000

应用说明 Is unsuitable for ICC/IF or IHC-P.

靶标

图片



All lanes : Anti-Chk1 (phospho S296) antibody [EPR915] (ab79758) at 1/1500 dilution

Lane 1 : Untreated 293 cell lysate

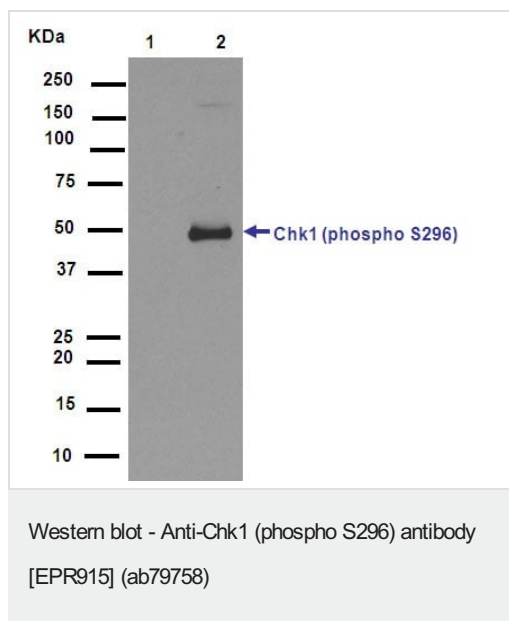
Lane 2 : Treated with Calyculin A 293 cell lysate

Lysates/proteins at 10 µg per lane.

Secondary

All lanes : Goat Anti-Rabbit IgG, (H+L), HRP conjugated at 1/1000 dilution

Predicted band size: 54 kDa



All lanes : Anti-Chk1 (phospho S296) antibody [EPR915] (ab79758) at 1/1000 dilution (Unpurified)

Lane 1 : Untreated 293 cell Lysate

Lane 2 : 293 cell lysate, treated with Calyculin





Lysates/proteins at 10 µg per lane.

Secondary

All lanes : Goat Anti-Rabbit IgG, (H+L), HRP conjugated at 1/1000 dilution

Predicted band size: 54 kDa

Why choose a recombinant antibody?

 <p>Research with confidence Consistent and reproducible results</p>	 <p>Long-term and scalable supply Recombinant technology</p>
 <p>Success from the first experiment Confirmed specificity</p>	 <p>Ethical standards compliant Animal-free production</p>

Anti-Chk1 (phospho S296) antibody [EPR915] (ab79758)

Please note: All products are "FOR RESEARCH USE ONLY. NOT FOR USE IN DIAGNOSTIC PROCEDURES"

Our Abpromise to you: Quality guaranteed and expert technical support

- Replacement or refund for products not performing as stated on the datasheet
- Valid for 12 months from date of delivery
- Response to your inquiry within 24 hours
- We provide support in Chinese, English, French, German, Japanese and Spanish
- Extensive multi-media technical resources to help you
- We investigate all quality concerns to ensure our products perform to the highest standards

If the product does not perform as described on this datasheet, we will offer a refund or replacement. For full details of the Abpromise, please visit <https://www.abcam.cn/abpromise> or contact our technical team.

Terms and conditions

- Guarantee only valid for products bought direct from Abcam or one of our authorized distributors