

Chicken polyclonal to GAD67/GAD1 ab75712

★★★★★ [14 Abreviews](#) [6 References](#) [1 图像](#)

概述

产品名称	鸡多克隆抗体to GAD67/GAD1
宿主	Chicken
经测试应用	适用于: IHC-P, ICC/IF
种属反应性	与反应: Mouse, Rat, Human
免疫原	Synthetic peptide corresponding to Human GAD1/GAD67 conjugated to keyhole limpet haemocyanin. Corresponding to a region of GAD67 (EC 4.1.1.15) shared between the mouse (P48318), rat (NP_058703) and human (Q99259) gene products Database link: Q99259-1
常规说明	<p>It is important to note that, in our hands, we saw only a subpopulation of GABAergic neurons in various mouse brain structures, including cerebral cortex and cerebellar cortex, labeled with our anti-GAD-67 antibody. This was seen multiple times, and following steps to increase antibody penetration into the tissue. Although the basis of this mysterious subpopulation is unclear, we suspect that the epitope specifically recognized by this antibody on GAD-67 may be cryptic or absent in some inhibitory neurons.</p> <p>The Life Science industry has been in the grips of a reproducibility crisis for a number of years. Abcam is leading the way in addressing this with our range of recombinant monoclonal antibodies and knockout edited cell lines for gold-standard validation. Please check that this product meets your needs before purchasing.</p> <p>If you have any questions, special requirements or concerns, please send us an inquiry and/or contact our Support team ahead of purchase. Recommended alternatives for this product can be found below, along with publications, customer reviews and Q&As</p>

性能

形式	Liquid
存放说明	Shipped at 4°C. Store at +4°C short term (1-2 weeks). Store at -20°C or -80°C. Avoid freeze / thaw cycle.
存储溶液	<p>pH: 7</p> <p>Preservative: 0.02% Sodium azide</p> <p>Constituent: 0.0268% PBS</p> <p>PBS isotonic (0.9%, w/v)</p>

纯度	Immunogen affinity purified
纯化说明	IgY fraction purified from yolks then affinity purified using peptide columns and filter sterilized.
克隆	多克隆
同种型	IgY

应用

The Abpromise guarantee **Abpromise™**承诺保证使用ab75712于以下的经测试应用

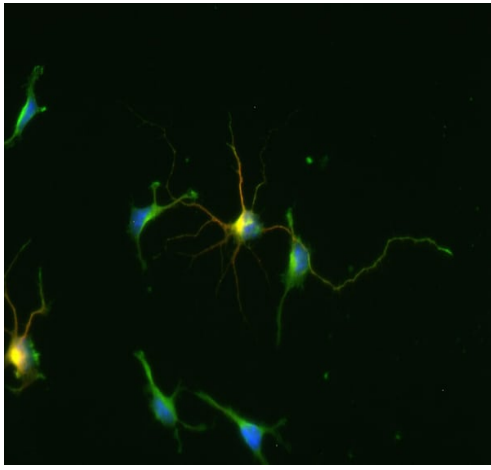
“应用说明”部分 下显示的仅为推荐的起始稀释度;实际最佳的稀释度/浓度应由使用者检定。

应用	Ab评论	说明
IHC-P		Use at an assay dependent concentration.
ICC/IF		1/1000 - 1/2000.

靶标

功能	Catalyzes the production of GABA.
组织特异性	Isoform 3 is expressed in pancreatic islets, testis, adrenal cortex, and perhaps other endocrine tissues, but not in brain.
疾病相关	Defects in GAD1 are the cause of cerebral palsy spastic quadriplegic type 1 (CPSQ1) [MIM:603513]. A non-progressive disorder of movement and/or posture resulting from defects in the developing central nervous system. Affected individuals manifest symmetrical, non-progressive spasticity and no adverse perinatal history or obvious underlying alternative diagnosis. Developmental delay, mental retardation and sometimes epilepsy can be part of the clinical picture.
序列相似性	Belongs to the group II decarboxylase family.

图片



Immunocytochemistry/Immunofluorescence analysis of e18 mouse neurosphere cells in culture labelling GAD1/GAD67 (green) with ab75712. Cells were fixed with 4% paraformaldehyde. Red - rabbit anti-MAP2, Blue: DAPI nuclear stain.

Immunocytochemistry/ Immunofluorescence -
Chicken polyclonal to GAD67/GAD1 (ab75712)

Please note: All products are "FOR RESEARCH USE ONLY. NOT FOR USE IN DIAGNOSTIC PROCEDURES"

Our Abpromise to you: Quality guaranteed and expert technical support

- Replacement or refund for products not performing as stated on the datasheet
- Valid for 12 months from date of delivery
- Response to your inquiry within 24 hours
- We provide support in Chinese, English, French, German, Japanese and Spanish
- Extensive multi-media technical resources to help you
- We investigate all quality concerns to ensure our products perform to the highest standards

If the product does not perform as described on this datasheet, we will offer a refund or replacement. For full details of the Abpromise, please visit <https://www.abcam.cn/abpromise> or contact our technical team.

Terms and conditions

- Guarantee only valid for products bought direct from Abcam or one of our authorized distributors