

### Anti-Chemerin antibody ab72965

★★★★★ [1 Abreviews](#) [9 References](#) [2 图像](#)

#### 概述

产品名称	Anti-Chemerin抗体
描述	小鼠多克隆抗体to Chemerin
宿主	Mouse
经测试应用	适用于: ICC/IF, WB
种属反应性	与反应: Human
免疫原	Recombinant full length protein within Human Chemerin. The exact immunogen sequence used to generate this antibody is proprietary information. If additional detail on the immunogen is needed to determine the suitability of the antibody for your needs, please <b><a href="#">contact</a></b> our Scientific Support team to discuss your requirements.

#### 常规说明

The Life Science industry has been in the grips of a reproducibility crisis for a number of years. Abcam is leading the way in addressing this with our range of recombinant monoclonal antibodies and knockout edited cell lines for gold-standard validation. Please check that this product meets your needs before purchasing.

If you have any questions, special requirements or concerns, please send us an inquiry and/or contact our Support team ahead of purchase. Recommended alternatives for this product can be found below, along with publications, customer reviews and Q&As

#### 性能

形式	Liquid
存放说明	Shipped at 4°C. Upon delivery aliquot and store at -20°C or -80°C. Avoid repeated freeze / thaw cycles.
存储溶液	pH: 7.40 Constituent: 100% PBS
纯度	Protein A purified
克隆	多克隆
同种型	IgG

#### 应用

The Abpromise guarantee

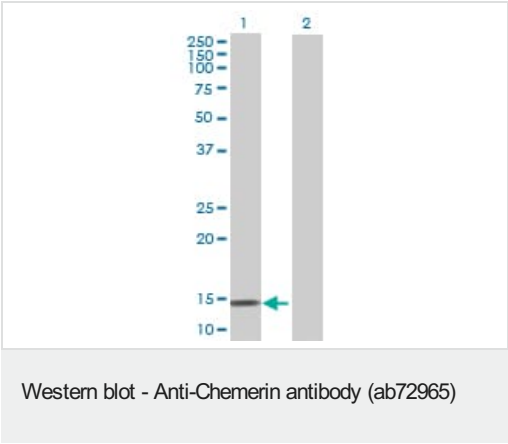
Abpromise™承诺保证使用ab72965于以下的经测试应用

“应用说明”部分 下显示的仅为推荐的起始稀释度;实际最佳的稀释度/浓度应由使用者检定。

应用	Ab评论	说明
ICC/IF		Use a concentration of 5 µg/ml.
WB		1/500 - 1/1000. Predicted molecular weight: 19 kDa.

靶标	
组织特异性	Highly expressed in skin (basal and suprabasal layers of the epidermis, hair follicles and endothelial cells). Also found in pancreas, liver, spleen, prostate, ovary, small intestine and colon.
细胞定位	Secreted.

图片



All lanes : Anti-Chemerin antibody (ab72965) at 1/500 dilution

Lane 1 : Chemerin transfected 293T cell lysate

Lane 2 : Non-transfected 293T cell lysate

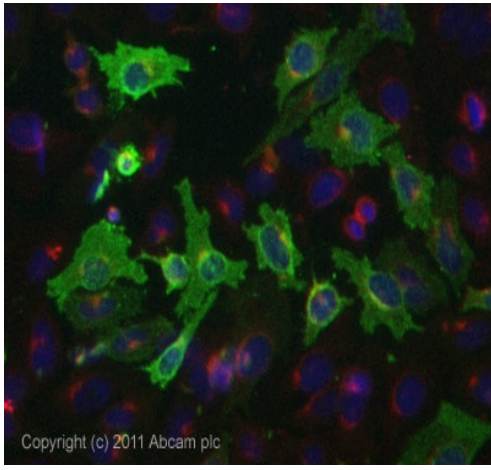
Lysates/proteins at 25 µg per lane.

Secondary

All lanes : Goat Anti-Mouse IgG (H&L)-HRP Conjugate at 1/2500 dilution

Predicted band size: 19 kDa

Observed band size: 15 kDa



Immunocytochemistry/ Immunofluorescence - Anti-Chemerin antibody (ab72965)

ICC/IF image of ab72965 stained MCF7 cells. The cells were 4% formaldehyde fixed (10 min) and then incubated in 1%BSA / 10% normal goat serum / 0.3M glycine in 0.1% PBS-Tween for 1h to permeabilise the cells and block non-specific protein-protein interactions. The cells were then incubated with the antibody (ab72965, 5µg/ml) overnight at +4°C. The secondary antibody (green) was **ab96879**, DyLight® 488 goat anti-mouse IgG (H+L) used at a 1/250 dilution for 1h. Alexa Fluor® 594 WGA was used to label plasma membranes (red) at a 1/200 dilution for 1h. DAPI was used to stain the cell nuclei (blue) at a concentration of 1.43µM.

**Please note:** All products are "FOR RESEARCH USE ONLY. NOT FOR USE IN DIAGNOSTIC PROCEDURES"

### Our Abpromise to you: Quality guaranteed and expert technical support

- Replacement or refund for products not performing as stated on the datasheet
- Valid for 12 months from date of delivery
- Response to your inquiry within 24 hours
- We provide support in Chinese, English, French, German, Japanese and Spanish
- Extensive multi-media technical resources to help you
- We investigate all quality concerns to ensure our products perform to the highest standards

If the product does not perform as described on this datasheet, we will offer a refund or replacement. For full details of the Abpromise, please visit <https://www.abcam.cn/abpromise> or contact our technical team.

### Terms and conditions

- Guarantee only valid for products bought direct from Abcam or one of our authorized distributors