

Anti-CHD4 antibody ab72418

[46 References](#) [2 图像](#)

概述

产品名称	Anti-CHD4抗体
描述	兔多克隆抗体to CHD4
宿主	Rabbit
经测试应用	适用于: WB, IP
种属反应性	与反应: Human
免疫原	Synthetic peptide corresponding to a region between residues 25 and 75 of human CHD4 (NP_001264.2)
阳性对照	WB: HeLa, Jurkat and HEK-293T cell lysates; IP: HeLa cell lysate.
常规说明	<p>The Life Science industry has been in the grips of a reproducibility crisis for a number of years. Abcam is leading the way in addressing this with our range of recombinant monoclonal antibodies and knockout edited cell lines for gold-standard validation. Please check that this product meets your needs before purchasing.</p> <p>If you have any questions, special requirements or concerns, please send us an inquiry and/or contact our Support team ahead of purchase. Recommended alternatives for this product can be found below, along with publications, customer reviews and Q&As</p>

性能

形式	Liquid
存放说明	Shipped at 4°C. Store at +4°C short term (1-2 weeks). Upon delivery aliquot. Store at -20°C. Avoid freeze / thaw cycle.
存储溶液	pH: 7 Preservative: 0.09% Sodium azide Constituents: 0.1% BSA, Tris buffered saline
纯度	Immunogen affinity purified
纯化说明	ab72418 was affinity purified using an epitope specific to CHD4 immobilized on solid support.
克隆	多克隆
同种型	IgG

应用

The Abpromise guarantee

Abpromise™ 承诺保证使用 ab72418 于以下的经测试应用

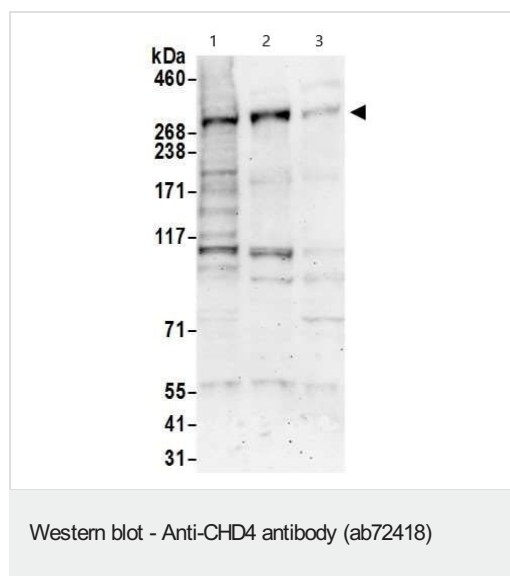
“应用说明”部分下显示的仅为推荐的起始稀释度；实际最佳的稀释度/浓度应由使用者检定。

应用	Ab评论	说明
WB		1/2000 - 1/10000. Detects a band of approximately 280 kDa (predicted molecular weight: 218 kDa).
IP		Use at 2-10 µg/mg of lysate.

靶标

功能	Component of the histone deacetylase NuRD complex which participates in the remodeling of chromatin by deacetylating histones.
序列相似性	Belongs to the SNF2/RAD54 helicase family. Contains 2 chromo domains. Contains 1 helicase ATP-binding domain. Contains 1 helicase C-terminal domain. Contains 2 PHD-type zinc fingers.
翻译后修饰	Phosphorylated upon DNA damage, probably by ATM or ATR.
细胞定位	Nucleus. Cytoplasm > cytoskeleton > centrosome. Associates with centrosomes in interphase.

图片



All lanes : Anti-CHD4 antibody (ab72418) at 0.1 µg/ml

Lane 1 : HeLa (human epithelial cell line from cervix adenocarcinoma) whole cell lysate

Lane 2 : HEK-293T (human epithelial cell line from embryonic kidney transformed with large T antigen) whole cell lysate

Lane 3 : Jurkat (human T cell leukemia cell line from peripheral blood) whole cell lysate

Lysates/proteins at 50 µg per lane.

Predicted band size: 218 kDa

Exposure time: 3 minutes

Lysates prepared using NETN lysis buffer.



Immunoprecipitation - Anti-CHD4 antibody (ab72418)

Detection of CHD4 by Western Blot of Immunoprecipitate.

ab72418 at 0.1µg/ml staining CHD4 in HeLa whole cell lysate immunoprecipitated using ab72418 at 3µg/mg lysate (1 mg/IP; 20% of IP loaded/lane).

Detection: Chemiluminescence with exposure time of 10 seconds.

Please note: All products are "FOR RESEARCH USE ONLY. NOT FOR USE IN DIAGNOSTIC PROCEDURES"

Our Abpromise to you: Quality guaranteed and expert technical support

- Replacement or refund for products not performing as stated on the datasheet
- Valid for 12 months from date of delivery
- Response to your inquiry within 24 hours
- We provide support in Chinese, English, French, German, Japanese and Spanish
- Extensive multi-media technical resources to help you
- We investigate all quality concerns to ensure our products perform to the highest standards

If the product does not perform as described on this datasheet, we will offer a refund or replacement. For full details of the Abpromise, please visit <https://www.abcam.cn/abpromise> or contact our technical team.

Terms and conditions

- Guarantee only valid for products bought direct from Abcam or one of our authorized distributors