

Anti-CETP antibody ab19012

[5 References](#) [1 图像](#)

概述

产品名称	Anti-CETP抗体
描述	兔多克隆抗体to CETP
宿主	Rabbit
特异性	This antibody recognises CETB (70 kDa).
经测试应用	适用于: WB
种属反应性	与反应: Human
免疫原	Synthetic peptide corresponding to Human CETP (N terminal). Immunogen is around amino acid 153. Database link: P11597
阳性对照	WB: Jurkat cell lysate
常规说明	<p>This product is manufactured by BioVision, an Abcam company and was previously called 3413 CETP Antibody. 3413-100 is the same size as the 100 µg size of ab19012.</p> <p>The Life Science industry has been in the grips of a reproducibility crisis for a number of years. Abcam is leading the way in addressing this with our range of recombinant monoclonal antibodies and knockout edited cell lines for gold-standard validation. Please check that this product meets your needs before purchasing.</p> <p>If you have any questions, special requirements or concerns, please send us an inquiry and/or contact our Support team ahead of purchase. Recommended alternatives for this product can be found below, along with publications, customer reviews and Q&As</p>

性能

形式	Liquid
存放说明	Shipped at 4°C. Upon delivery aliquot and store at -20°C or -80°C. Avoid repeated freeze / thaw cycles.
存储溶液	pH: 7.2 Preservative: 0.02% Sodium azide Constituents: PBS, 50% Glycerol (glycerin, glycerine), 1% BSA
克隆	多克隆
同种型	IgG

应用

The Abpromise guarantee **Abpromise™**承诺保证使用ab19012于以下的经测试应用

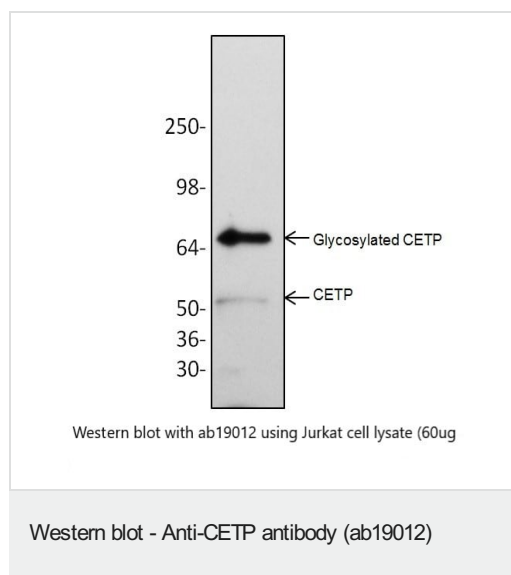
“应用说明”部分 下显示的仅为推荐的起始稀释度;实际最佳的稀释度/浓度应由使用者检定。

应用	Ab评论	说明
WB		Use a concentration of 0.5 - 4 µg/ml. Predicted molecular weight: 70 kDa.

靶标

功能	Involved in the transfer of insoluble cholesteryl esters in the reverse transport of cholesterol.
组织特异性	Expressed by the liver and secreted in plasma.
疾病相关	Defects in CETP are a cause of hyperalphalipoproteinemia (HYPALIP) [MIM:143470]. Affected individuals show high levels of alpha-lipoprotein (high density lipoprotein/HDL). Defects in CETP are the cause of cholesteryl ester transfer protein deficiency (CETP deficiency) [MIM:607322]. This is an autosomal dominant condition associated with increased HDL cholesterol levels.
序列相似性	Belongs to the BPI/LBP/Plunc superfamily. BPI/LBP family.
细胞定位	Secreted > extracellular space.

图片



Anti-CETP antibody (ab19012) (0.5-4 mg/ml) + Jurkat cell lysate at 60 µg

Predicted band size: 70 kDa

The antibody recognizes 54 kDa CETP and the 70 kDa mature glycosylated form of CETP

Please note: All products are "FOR RESEARCH USE ONLY. NOT FOR USE IN DIAGNOSTIC PROCEDURES"

Our Abpromise to you: Quality guaranteed and expert technical support

- Replacement or refund for products not performing as stated on the datasheet

- Valid for 12 months from date of delivery
- Response to your inquiry within 24 hours

- We provide support in Chinese, English, French, German, Japanese and Spanish
- Extensive multi-media technical resources to help you
- We investigate all quality concerns to ensure our products perform to the highest standards

If the product does not perform as described on this datasheet, we will offer a refund or replacement. For full details of the Abpromise, please visit <https://www.abcam.cn/abpromise> or contact our technical team.

Terms and conditions

- Guarantee only valid for products bought direct from Abcam or one of our authorized distributors