

Anti-CES2 antibody ab88439

2 图像

概述	
产品名称	Anti-CES2抗体
描述	小鼠多克隆抗体to CES2
宿主	Mouse
经测试应用	适用于: WB
种属反应性	与反应: Human
免疫原	Recombinant full length protein corresponding to Human CES2 aa 1-650. Full length protein, corresponding to amino acids 1-623 of Human CES2 (NP_003860.2).
阳性对照	Human liver tissue lysate and cell lysate from CES2 transfected 293T cells.
常规说明	<p>The Life Science industry has been in the grips of a reproducibility crisis for a number of years. Abcam is leading the way in addressing this with our range of recombinant monoclonal antibodies and knockout edited cell lines for gold-standard validation. Please check that this product meets your needs before purchasing.</p> <p>If you have any questions, special requirements or concerns, please send us an inquiry and/or contact our Support team ahead of purchase. Recommended alternatives for this product can be found below, along with publications, customer reviews and Q&As</p>
性能	
形式	Liquid
存放说明	Shipped at 4°C. Upon delivery aliquot and store at -20°C. Avoid repeated freeze / thaw cycles.
存储溶液	pH: 7.4 Constituent: PBS
纯度	Protein A purified
克隆	多克隆
同种型	IgG
应用	

The Abpromise guarantee

Abpromise™承诺保证使用ab88439于以下的经测试应用

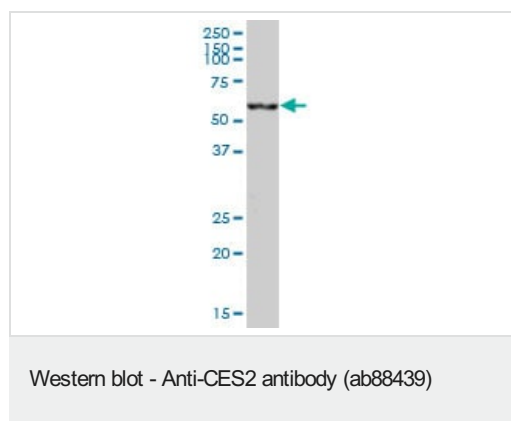
“应用说明”部分 下显示的仅为推荐的起始稀释度;实际最佳的稀释度/浓度应由使用者检定。

应用	Ab评论	说明
WB		Use a concentration of 1 µg/ml. Predicted molecular weight: 62 kDa.

靶标

功能	Involved in the detoxification of xenobiotics and in the activation of ester and amide prodrugs. Shows high catalytic efficiency for hydrolysis of cocaine, 4-methyumbelliferyl acetate, heroin and 6-monoacetylmorphine.
组织特异性	Preferentially expressed in intestine with moderate expression in liver. Within the intestine, highest expression is found in small intestine with lower expression in colon and rectum.
序列相似性	Belongs to the type-B carboxylesterase/lipase family.
翻译后修饰	Glycosylated.
细胞定位	Endoplasmic reticulum lumen.

图片

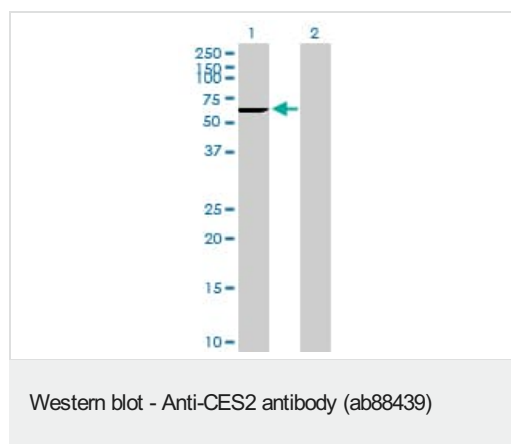


Anti-CES2 antibody (ab88439) at 1 µg/ml + human liver tissue lysate at 25 µg

Developed using the ECL technique.

Predicted band size: 62 kDa

Observed band size: 62 kDa



All lanes : Anti-CES2 antibody (ab88439) at 1 µg/ml

Lane 1 : cell lysate from CES2 transfected 293T cells

Lane 2 : cell lysate from non transfected 293 T cells

Lysates/proteins at 25 µg per lane.

Developed using the ECL technique.

Predicted band size: 62 kDa

Observed band size: 62 kDa

Please note: All products are "FOR RESEARCH USE ONLY. NOT FOR USE IN DIAGNOSTIC PROCEDURES"

Our Abpromise to you: Quality guaranteed and expert technical support

- Replacement or refund for products not performing as stated on the datasheet
- Valid for 12 months from date of delivery
- Response to your inquiry within 24 hours
- We provide support in Chinese, English, French, German, Japanese and Spanish
- Extensive multi-media technical resources to help you
- We investigate all quality concerns to ensure our products perform to the highest standards

If the product does not perform as described on this datasheet, we will offer a refund or replacement. For full details of the Abpromise, please visit <https://www.abcam.cn/abpromise> or contact our technical team.

Terms and conditions

- Guarantee only valid for products bought direct from Abcam or one of our authorized distributors