




# Anti-CERT antibody ab151285

## 2 图像

### 概述

<b>产品名称</b>	Anti-CERT抗体
<b>描述</b>	兔多克隆抗体to CERT
<b>宿主</b>	Rabbit
<b>经测试应用</b>	<b>适用于:</b> WB, ICC/IF
<b>种属反应性</b>	<b>与反应:</b> Human <b>预测可用于:</b> Mouse, Rat, Cow, Xenopus laevis, Xenopus tropicalis 
<b>免疫原</b>	Synthetic peptide corresponding to Human CERT aa 1-100 (N terminal). Database link: <a href="#">Q9Y5P4-1</a>  <a href="#">Run BLAST with</a>  <a href="#">Run BLAST with</a>
<b>阳性对照</b>	A431, HeLa, HepG2 and H1299 whole cell lysates; methanol-fixed A431 cells.
<b>常规说明</b>	<p>The Life Science industry has been in the grips of a reproducibility crisis for a number of years. Abcam is leading the way in addressing this with our range of recombinant monoclonal antibodies and knockout edited cell lines for gold-standard validation. Please check that this product meets your needs before purchasing.</p> <p>If you have any questions, special requirements or concerns, please send us an inquiry and/or contact our Support team ahead of purchase. Recommended alternatives for this product can be found below, along with publications, customer reviews and Q&amp;As</p>

### 性能

<b>形式</b>	Liquid
<b>存放说明</b>	Shipped at 4°C. Upon delivery aliquot. Store at -20°C or -80°C. Avoid freeze / thaw cycle.
<b>存储溶液</b>	pH: 7.00 Preservative: 0.01% Thimerosal (merthiolate) Constituents: 1.21% Tris, 0.75% Glycine, 10% Glycerol (glycerin, glycerine)
<b>纯度</b>	Immunogen affinity purified
<b>克隆</b>	多克隆
<b>同种型</b>	IgG

### 应用

## The Abpromise guarantee

**Abpromise™** 承诺保证使用 ab151285 于以下的经测试应用

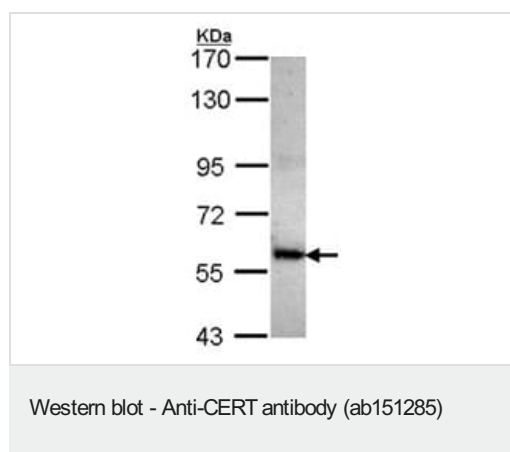
“应用说明”部分 下显示的仅为推荐的起始稀释度;实际最佳的稀释度/浓度应由使用者检定。

应用	Ab评论	说明
WB		1/500 - 1/3000. Predicted molecular weight: 68 kDa.
ICC/IF		1/100 - 1/1000.

## 靶标

功能	May mediate the intracellular trafficking of ceramide in a non-vesicular manner.
组织特异性	Widely expressed.
序列相似性	Contains 1 PH domain. Contains 1 START domain.
结构域	The START domain recognizes ceramide and mediates the intermembrane transfer of ceramide. The PH domain targets the Golgi apparatus. The FFAT motif is required for interaction with VAPA and VAPB.
翻译后修饰	Phosphorylation on Ser-132 decreases the affinity toward phosphatidylinositol 4-phosphate at Golgi membranes and reduces ceramide transfer activity.
细胞定位	Cytoplasm. Golgi apparatus. Endoplasmic reticulum. Preferentially localized to the Golgi apparatus.

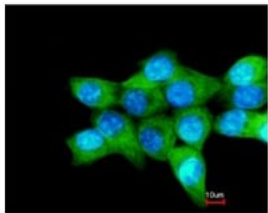
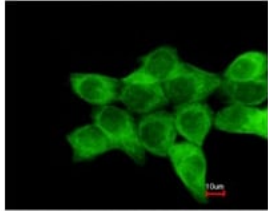
## 图片



Anti-CERT antibody (ab151285) at 1/1000 dilution + H1299 whole cell lysate at 30 µg

**Predicted band size:** 68 kDa

7.5% SDS PAGE



Immunofluorescent analysis of methanol-fixed A431 cells labeling SA1 with ab151285 at 1/200 dilution. Lower image shows cells co-stained with Hoechst 33342.

Immunocytochemistry/ Immunofluorescence - Anti-CERT antibody (ab151285)

**Please note:** All products are "FOR RESEARCH USE ONLY. NOT FOR USE IN DIAGNOSTIC PROCEDURES"

### Our Abpromise to you: Quality guaranteed and expert technical support

---

- Replacement or refund for products not performing as stated on the datasheet
- Valid for 12 months from date of delivery
- Response to your inquiry within 24 hours
- We provide support in Chinese, English, French, German, Japanese and Spanish
- Extensive multi-media technical resources to help you
- We investigate all quality concerns to ensure our products perform to the highest standards

If the product does not perform as described on this datasheet, we will offer a refund or replacement. For full details of the Abpromise, please visit <https://www.abcam.cn/abpromise> or contact our technical team.

### Terms and conditions

---

- Guarantee only valid for products bought direct from Abcam or one of our authorized distributors