

Anti-CEP76 antibody ab86613

2 图像

概述

产品名称	Anti-CEP76抗体
描述	兔多克隆抗体to CEP76
宿主	Rabbit
经测试应用	适用于: WB, IP
种属反应性	与反应: Human 预测可用于: Mouse, Rat, Rabbit, Horse, Cow, Dog, Pig, Rhesus monkey, Opossum, Orangutan



免疫原	Synthetic peptide corresponding to a region between residues 1 and 30 of Human CEP76 (NP_079175.2).
阳性对照	HeLa and 293T whole cell lysates.
常规说明	<p>The Life Science industry has been in the grips of a reproducibility crisis for a number of years. Abcam is leading the way in addressing this with our range of recombinant monoclonal antibodies and knockout edited cell lines for gold-standard validation. Please check that this product meets your needs before purchasing.</p> <p>If you have any questions, special requirements or concerns, please send us an inquiry and/or contact our Support team ahead of purchase. Recommended alternatives for this product can be found below, along with publications, customer reviews and Q&As</p>

性能

形式	Liquid
存放说明	Shipped at 4°C. Upon delivery aliquot and store at -20°C. Avoid freeze / thaw cycles.
存储溶液	pH: 7 Preservative: 0.09% Sodium azide Constituent: Tris citrate/phosphate
纯度	Immunogen affinity purified
克隆	多克隆
同种型	IgG

应用

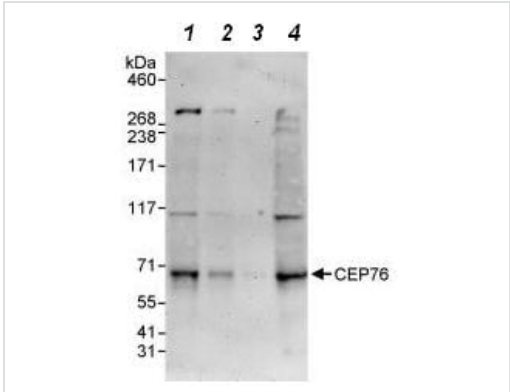
The Abpromise guarantee **Abpromise™**承诺保证使用ab86613于以下的经测试应用

“应用说明”部分 下显示的仅为推荐的起始稀释度;实际最佳的稀释度/浓度应由使用者检定。

应用	Ab评论	说明
WB		1/2000 - 1/10000. Predicted molecular weight: 76 kDa.
IP		Use at 10 µg/mg of lysate.

靶标	
功能	Centrosomal protein involved in regulation of centriole duplication. Required to limit centriole duplication to once per cell cycle by preventing centriole reduplication.
序列相似性	Belongs to the CEP76 family.
发展阶段	Expressed at low level in G1 and is induced in S and G2 phase, during which point centrioles have already commenced duplication (at protein level).
细胞定位	Cytoplasm > cytoskeleton > centrosome. Cytoplasm > cytoskeleton > centrosome > centriole. Does not localize along the ciliary axoneme.

图片



Western blot - Anti-CEP76 antibody (ab86613)

All lanes : Anti-CEP76 antibody (ab86613) at 0.1 µg/ml

Lane 1 : HeLa whole cell lysate at 50 µg

Lane 2 : HeLa whole cell lysate at 15 µg

Lane 3 : HeLa whole cell lysate at 5 µg

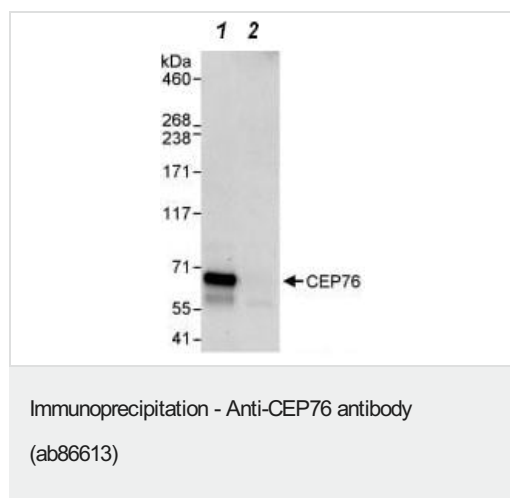
Lane 4 : 293T whole cell lysate at 50 µg

Predicted band size: 76 kDa

Observed band size: 69 kDa

Additional bands at: 115 kDa, 305 kDa. We are unsure as to the identity of these extra bands.

Detection: Chemiluminescence with exposure time of 3 minutes



Western Blot detection of CEP76 in Immunoprecipitates of HeLa whole cell lysate (1 mg for IP, 20% of IP loaded) using ab86613 at 10 µg/mg lysate for IP and at 1 µg/ml for subsequent Western blot detection. Lane 2 represents control IgG IP.

Detection: Chemiluminescence with exposure time of 30 seconds

All lanes : Anti-CEP76 antibody (ab86613) at 1 µg/ml

Lane 1 : immunoprecipitated CEP76

Lane 2 : control IgG

Please note: All products are "FOR RESEARCH USE ONLY. NOT FOR USE IN DIAGNOSTIC PROCEDURES"

Our Abpromise to you: Quality guaranteed and expert technical support

- Replacement or refund for products not performing as stated on the datasheet
- Valid for 12 months from date of delivery
- Response to your inquiry within 24 hours
- We provide support in Chinese, English, French, German, Japanese and Spanish
- Extensive multi-media technical resources to help you
- We investigate all quality concerns to ensure our products perform to the highest standards

If the product does not perform as described on this datasheet, we will offer a refund or replacement. For full details of the Abpromise, please visit <https://www.abcam.cn/abpromise> or contact our technical team.

Terms and conditions

- Guarantee only valid for products bought direct from Abcam or one of our authorized distributors