


# Anti-CEP57 antibody ab104010

## 2 图像

### 概述

产品名称	Anti-CEP57抗体
描述	兔多克隆抗体to CEP57
宿主	Rabbit
经测试应用	适用于: WB, IHC-P
种属反应性	与反应: Human 预测可用于: Mouse, Rat, Cow 
免疫原	Recombinant fragment, corresponding to a region within amino acids 86-251 of Human CEP57 (AAH01233).
阳性对照	NT2D1 whole cell lysate; NCI-N87 xenograft; MCF-7 cell lysate
常规说明	<p>The Life Science industry has been in the grips of a reproducibility crisis for a number of years. Abcam is leading the way in addressing this with our range of recombinant monoclonal antibodies and knockout edited cell lines for gold-standard validation. Please check that this product meets your needs before purchasing.</p> <p>If you have any questions, special requirements or concerns, please send us an inquiry and/or contact our Support team ahead of purchase. Recommended alternatives for this product can be found below, along with publications, customer reviews and Q&amp;As</p>

### 性能

形式	Liquid
存放说明	Shipped at 4°C. Upon delivery aliquot. Store at -20°C or -80°C. Avoid freeze / thaw cycle.
存储溶液	<p>pH: 7.00</p> <p>Preservative: 0.01% Thimerosal (merthiolate)</p> <p>Constituents: 1.21% Tris, 0.75% Glycine, 20% Glycerol (glycerin, glycerine)</p>
纯度	Immunogen affinity purified
克隆	多克隆
同种型	IgG

### 应用

The Abpromise guarantee

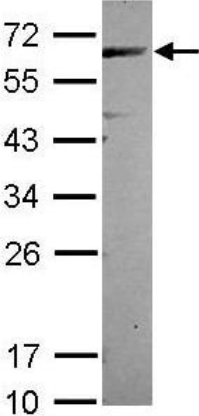
Abpromise™承诺保证使用ab104010于以下的经测试应用

“应用说明”部分 下显示的仅为推荐的起始稀释度;实际最佳的稀释度/浓度应由使用者检定。

应用	Ab评论	说明
WB		1/500 - 1/3000. Predicted molecular weight: 57 kDa.
IHC-P		1/100 - 1/500. Heat mediated antigen retrieval using 10mM Citrate buffer or Tris-EDTA buffer (pH8.0) is recommended.

靶标	
功能	Centrosomal protein which may be required for microtubule attachment to centrosomes. May act by forming ring-like structures around microtubules. Mediates nuclear translocation and mitogenic activity of the internalized growth factor FGF2.
组织特异性	Ubiquitous.
序列相似性	Belongs to the translokin family.
结构域	The C-terminal region mediates the interaction with microtubules and is able to nucleate and bundles microtubules in vitro. The centrosome localization domain (CLD) region mediates the localization to centrosomes and homooligomerization.
细胞定位	Nucleus. Cytoplasm. Cytoplasm > cytoskeleton > centrosome.

图片

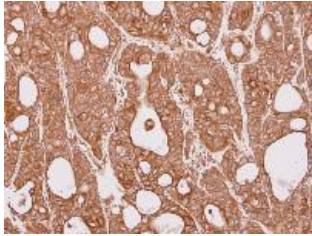


Anti-CEP57 antibody (ab104010) at 1/3000 dilution + NT2D1 whole cell lysate at 30 µg

Predicted band size: 57 kDa

12% SDS-PAGE

Western blot - Anti-CEP57 antibody (ab104010)



ab104010, at 1/100 dilution, staining CEP57 in paraffin-embedded NCI-N87 xenograft by Immunohistochemistry.

Immunohistochemistry (Formalin/PFA-fixed paraffin-embedded sections) - Anti-CEP57 antibody (ab104010)

**Please note:** All products are "FOR RESEARCH USE ONLY. NOT FOR USE IN DIAGNOSTIC PROCEDURES"

### Our Abpromise to you: Quality guaranteed and expert technical support

---

- Replacement or refund for products not performing as stated on the datasheet
- Valid for 12 months from date of delivery
- Response to your inquiry within 24 hours
- We provide support in Chinese, English, French, German, Japanese and Spanish
- Extensive multi-media technical resources to help you
- We investigate all quality concerns to ensure our products perform to the highest standards

If the product does not perform as described on this datasheet, we will offer a refund or replacement. For full details of the Abpromise, please visit <https://www.abcam.cn/abpromise> or contact our technical team.

### Terms and conditions

---

- Guarantee only valid for products bought direct from Abcam or one of our authorized distributors