

Anti-CEP170 antibody ab72505

7 References **3 图像**

概述

产品名称	Anti-CEP170抗体
描述	兔多克隆抗体to CEP170
宿主	Rabbit
经测试应用	适用于: ICC, WB, IP
种属反应性	与反应: Human 预测可用于: Rabbit, Cow, Chimpanzee 
免疫原	Synthetic peptide corresponding to a region between residue 1534 and the C-terminus (residue 1584) of human CEP170 (NP_055627.2)
常规说明	<p>The Life Science industry has been in the grips of a reproducibility crisis for a number of years. Abcam is leading the way in addressing this with our range of recombinant monoclonal antibodies and knockout edited cell lines for gold-standard validation. Please check that this product meets your needs before purchasing.</p> <p>If you have any questions, special requirements or concerns, please send us an inquiry and/or contact our Support team ahead of purchase. Recommended alternatives for this product can be found below, along with publications, customer reviews and Q&As</p>

性能

形式	Liquid
存放说明	Shipped at 4°C. Upon delivery aliquot and store at -20°C. Avoid freeze / thaw cycles.
存储溶液	pH: 6.8 Preservative: 0.09% Sodium azide Constituents: 0.1% BSA, Tris buffered saline
纯度	Immunogen affinity purified
纯化说明	ab72505 was affinity purified using an epitope specific to CEP170 immobilized on solid support.
克隆	多克隆
同种型	IgG

应用

The Abpromise guarantee Abpromise™承诺保证使用ab72505于以下的经测试应用

“应用说明”部分 下显示的仅为推荐的起始稀释度;实际最佳的稀释度/浓度应由使用者检定。

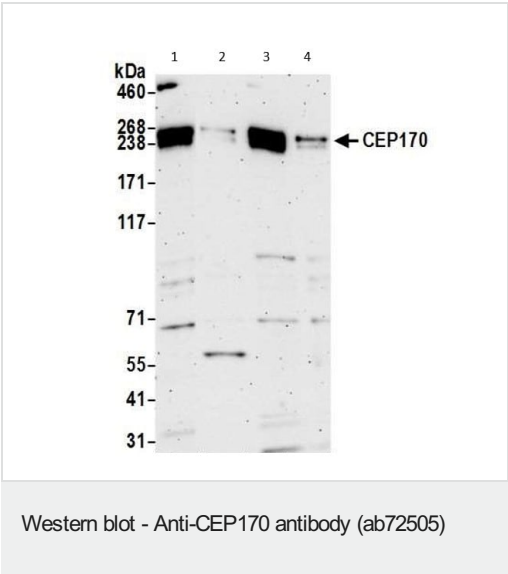
应用	Ab评论	说明
ICC		Use at an assay dependent concentration.
WB		Use a concentration of 0.04 µg/ml. Detects a band of approximately 220 kDa (predicted molecular weight: 176 kDa).
IP		Use at 6 µg/mg of lysate.

靶标

相关性 CEP170, centrosomal protein 170kDa, plays a role in microtubule organization. During interphase, the encoded protein localizes to the sub-distal appendages of mature centrioles, which are microtubule-based structures thought to help organize centrosomes. During mitosis, the protein associates with spindle microtubules near the centrosomes.

细胞定位 Centrosome, centriole. Cytoplasm, cytoskeleton. Associated with the mature mother centriole. Associated with spindle microtubules during mitosis.

图片

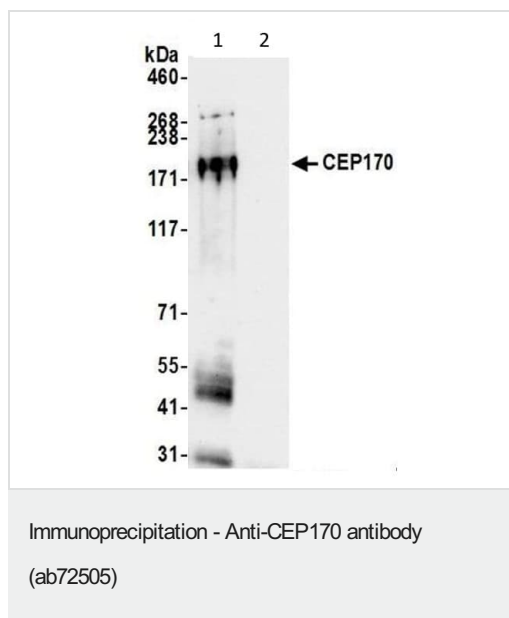


All lanes : Anti-CEP170 antibody (ab72505) at 0.04 µg/ml

- Lane 1 :** HEK293T whole cell lysate
- Lane 2 :** A-549 whole cell lysate
- Lane 3 :** K-562 whole cell lysate
- Lane 4 :** HeLa whole cell lysate

Lysates/proteins at 15 µg per lane.

Predicted band size: 176 kDa

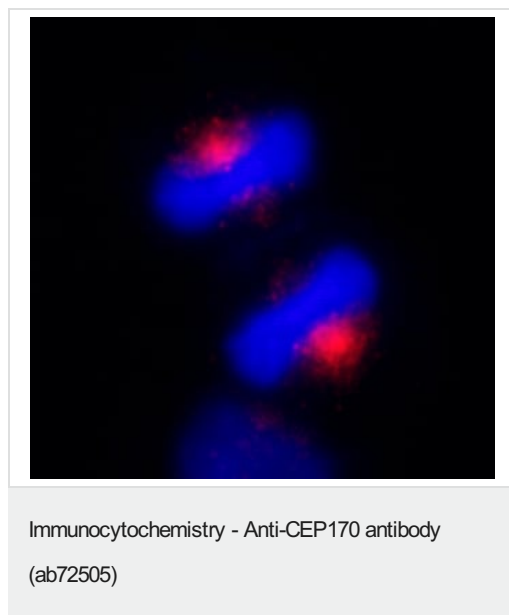


CEP170 was immunoprecipitated from HeLa whole cell lysate with ab72505. Western blot was performed on the immunoprecipitate using ab72505 at 0.04µg/ml.

Lane 1 : HeLa whole cell lysate

Lane 2 : Control IgG

Chemiluminescence with an exposure time of 10 seconds.



Immunocytochemistry/Immunofluorescence analysis of NBF-fixed asynchronous HeLa cells labelling CEP170 with ab72505 at 1/200. A red-fluorescent goat anti-rabbit IgG (1/100) was used as the secondary antibody.

Please note: All products are "FOR RESEARCH USE ONLY. NOT FOR USE IN DIAGNOSTIC PROCEDURES"

Our Abpromise to you: Quality guaranteed and expert technical support

- Replacement or refund for products not performing as stated on the datasheet
- Valid for 12 months from date of delivery

- Response to your inquiry within 24 hours
- We provide support in Chinese, English, French, German, Japanese and Spanish
- Extensive multi-media technical resources to help you
- We investigate all quality concerns to ensure our products perform to the highest standards

If the product does not perform as described on this datasheet, we will offer a refund or replacement. For full details of the Abpromise, please visit <https://www.abcam.cn/abpromise> or contact our technical team.

Terms and conditions

- Guarantee only valid for products bought direct from Abcam or one of our authorized distributors