

Anti-CENPI antibody ab118796

[4 References](#) [2 图像](#)

概述

产品名称	Anti-CENPI抗体
描述	兔多克隆抗体to CENPI
宿主	Rabbit
经测试应用	适用于: WB, IP
种属反应性	与反应: Human 预测可用于: Chimpanzee, Gorilla, Orangutan 
免疫原	Synthetic peptide corresponding to Human CENPI aa 50-150. Database link: Q92674
阳性对照	HeLa, 293T and Jurkat whole cell lysates
常规说明	<p>The Life Science industry has been in the grips of a reproducibility crisis for a number of years. Abcam is leading the way in addressing this with our range of recombinant monoclonal antibodies and knockout edited cell lines for gold-standard validation. Please check that this product meets your needs before purchasing.</p> <p>If you have any questions, special requirements or concerns, please send us an inquiry and/or contact our Support team ahead of purchase. Recommended alternatives for this product can be found below, along with publications, customer reviews and Q&As</p>

性能

形式	Liquid
存放说明	Shipped at 4°C. Upon delivery aliquot and store at -20°C. Avoid freeze / thaw cycles.
存储溶液	pH: 7 Preservative: 0.09% Sodium azide Constituent: 99% Tris citrate/phosphate
纯度	pH 7 to 8 Immunogen affinity purified
克隆	多克隆
同种型	IgG

应用

The Abpromise guarantee

Abpromise™ 承诺保证使用 ab118796 于以下的经测试应用

“应用说明”部分 下显示的仅为推荐的起始稀释度;实际最佳的稀释度/浓度应由使用者检定。

应用	Ab评论	说明
WB		1/2000 - 1/10000. Predicted molecular weight: 87 kDa.
IP		Use at 2-10 µg/mg of lysate.

靶标

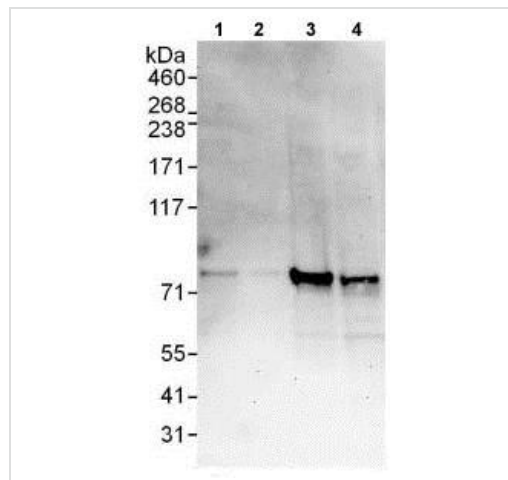
相关性

CENPI is a constitutive protein of the kinetochore that shares limited similarity with Mis6 of *S. pombe*. The kinetochore is a macromolecular complex located at the centromere of chromosomes and provides essential functions for chromosome segregation. CENPI is required for the localization of CENPF and the checkpoint proteins MAD1 and MAD2 to the kinetochore.

细胞定位

Cytoplasmic and Nuclear

图片



Western blot - Anti-CENPI antibody (ab118796)

All lanes : Anti-CENPI antibody (ab118796) at 0.1 µg/ml

Lane 1 : HeLa whole cell lysate at 50 µg

Lane 2 : HeLa whole cell lysate at 15 µg

Lane 3 : 293T whole cell lysate at 50 µg

Lane 4 : Jurkat whole cell lysate at 50 µg

Developed using the ECL technique.

Predicted band size: 87 kDa

Exposure time: 30 seconds



Immunoprecipitation - Anti-CENPI antibody
(ab118796)

Detection of CENPI in Immunoprecipitates of HeLa whole cell lysates (1 mg for IP, 20% of IP loaded) using ab118796 at 6 µg/mg lysate for IP and at 0.4 µg/ml for subsequent Western blot detection. Detection: Chemiluminescence with an exposure time of 10 seconds.

Please note: All products are "FOR RESEARCH USE ONLY. NOT FOR USE IN DIAGNOSTIC PROCEDURES"

Our Abpromise to you: Quality guaranteed and expert technical support

- Replacement or refund for products not performing as stated on the datasheet
- Valid for 12 months from date of delivery
- Response to your inquiry within 24 hours
- We provide support in Chinese, English, French, German, Japanese and Spanish
- Extensive multi-media technical resources to help you
- We investigate all quality concerns to ensure our products perform to the highest standards

If the product does not perform as described on this datasheet, we will offer a refund or replacement. For full details of the Abpromise, please visit <https://www.abcam.cn/abpromise> or contact our technical team.

Terms and conditions

- Guarantee only valid for products bought direct from Abcam or one of our authorized distributors