

Anti-CENPH antibody ab88593

2 References **5 图像**

概述

产品名称	Anti-CENPH抗体
描述	小鼠多克隆抗体to CENPH
宿主	Mouse
经测试应用	适用于: WB, ICC/IF
种属反应性	与反应: Mouse, Human
免疫原	Recombinant full length protein within Human CENPH aa 1-250. The exact immunogen sequence used to generate this antibody is proprietary information. If additional detail on the immunogen is needed to determine the suitability of the antibody for your needs, please <u>contact</u> our Scientific Support team to discuss your requirements.
阳性对照	HeLa cell lysate. Raw 264.7 cell lysate. NIH/3T3 cell lysate. Lysate from transfected 293T cells. HeLa cells.
常规说明	<p>The Life Science industry has been in the grips of a reproducibility crisis for a number of years. Abcam is leading the way in addressing this with our range of recombinant monoclonal antibodies and knockout edited cell lines for gold-standard validation. Please check that this product meets your needs before purchasing.</p> <p>If you have any questions, special requirements or concerns, please send us an inquiry and/or contact our Support team ahead of purchase. Recommended alternatives for this product can be found below, along with publications, customer reviews and Q&As</p>

性能

形式	Liquid
存放说明	Shipped at 4°C. Upon delivery aliquot and store at -20°C or -80°C. Avoid repeated freeze / thaw cycles.
存储溶液	pH: 7.4 Constituent: PBS
纯度	Protein A purified
克隆	多克隆
同种型	IgG

应用

The Abpromise guarantee **Abpromise™**承诺保证使用ab88593于以下的经测试应用

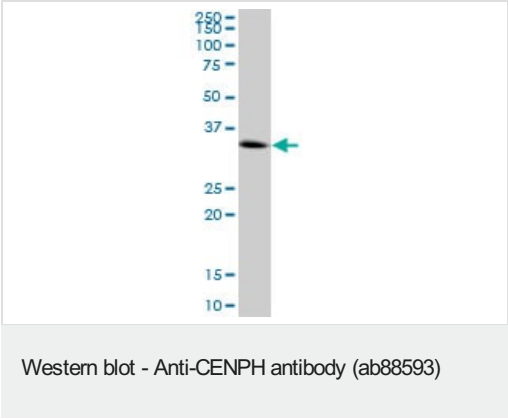
“应用说明”部分 下显示的仅为推荐的起始稀释度;实际最佳的稀释度/浓度应由使用者检定。

应用	Ab评论	说明
WB		Use a concentration of 1 - 5 µg/ml. Predicted molecular weight: 28 kDa.
ICC/IF		Use a concentration of 10 µg/ml.

靶标

功能	Component of the CENPA-NAC (nucleosome-associated) complex, a complex that plays a central role in assembly of kinetochore proteins, mitotic progression and chromosome segregation. The CENPA-NAC complex recruits the CENPA-CAD (nucleosome distal) complex and may be involved in incorporation of newly synthesized CENPA into centromeres. Required for chromosome congression and efficiently align the chromosomes on a metaphase plate.
序列相似性	Belongs to the centromere protein H family.
细胞定位	Nucleus. Chromosome > centromere > kinetochore. Associates with active centromere-kinetochore complexes throughout the cell cycle. Colocalizes with inner kinetochore plate proteins CENPA and CENPC1 during both interphase and metaphase.

图片

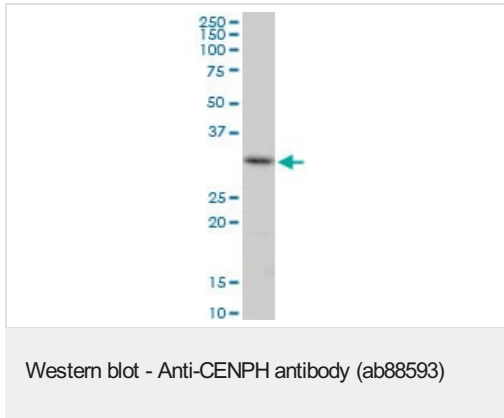


Anti-CENPH antibody (ab88593) at 5 µg/ml + HeLa cell lysate at 25 µg

Developed using the ECL technique.

Predicted band size: 28 kDa

Observed band size: 28 kDa

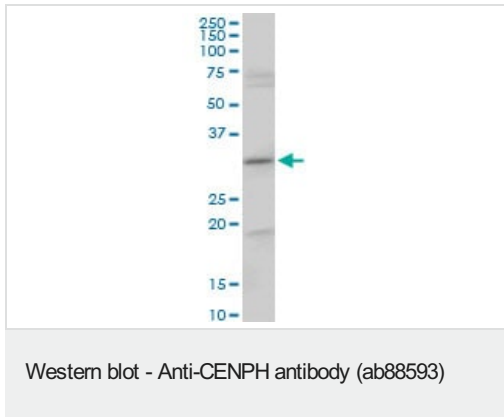


Anti-CENPH antibody (ab88593) at 5 µg/ml + Raw 264.7 cell lysate at 25 µg

Developed using the ECL technique.

Predicted band size: 28 kDa

Observed band size: 28 kDa



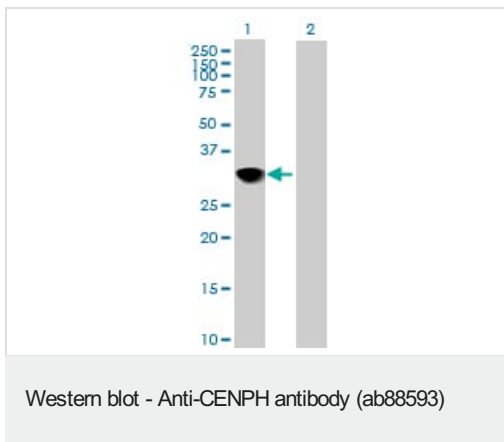
Anti-CENPH antibody (ab88593) at 5 µg/ml + NIH/3T3 cell lysate at 25 µg

Developed using the ECL technique.

Predicted band size: 28 kDa

Observed band size: 28 kDa

Additional bands at: ~19 kDa, ~60 kDa, ~70 kDa. We are unsure as to the identity of these extra bands.



All lanes : Anti-CENPH antibody (ab88593) at 5 µg/ml

Lane 1 : cell lysate from CENPH transfected 293T cells

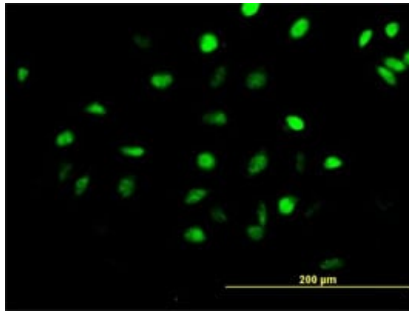
Lane 2 : cell lysate from non transfected 293T cells

Lysates/proteins at 25 µg per lane.

Developed using the ECL technique.

Predicted band size: 28 kDa

Observed band size: 28 kDa



ab88593 at 10 µg/ml detecting CENPH in HeLa cells by immunofluorescence.

Immunocytochemistry/ Immunofluorescence - Anti-CENPH antibody (ab88593)

Please note: All products are "FOR RESEARCH USE ONLY. NOT FOR USE IN DIAGNOSTIC PROCEDURES"

Our Abpromise to you: Quality guaranteed and expert technical support

- Replacement or refund for products not performing as stated on the datasheet
- Valid for 12 months from date of delivery
- Response to your inquiry within 24 hours
- We provide support in Chinese, English, French, German, Japanese and Spanish
- Extensive multi-media technical resources to help you
- We investigate all quality concerns to ensure our products perform to the highest standards

If the product does not perform as described on this datasheet, we will offer a refund or replacement. For full details of the Abpromise, please visit <https://www.abcam.cn/abpromise> or contact our technical team.

Terms and conditions

- Guarantee only valid for products bought direct from Abcam or one of our authorized distributors