

Anti-CENPF antibody ab5

★★★★★ 7 Abreviews 107 References 6 图像

概述	
产品名称	Anti-CENPF抗体
描述	兔多克隆抗体to CENPF
宿主	Rabbit
经测试应用	适用于: ICC, Flow Cyt, ICC/IF, IP, IHC-P, WB
种属反应性	与反应: Mouse, Human
免疫原	Fusion protein with C-terminus of CENP-F (Human).
常规说明	<p>The Life Science industry has been in the grips of a reproducibility crisis for a number of years. Abcam is leading the way in addressing this with our range of recombinant monoclonal antibodies and knockout edited cell lines for gold-standard validation. Please check that this product meets your needs before purchasing.</p> <p>If you have any questions, special requirements or concerns, please send us an inquiry and/or contact our Support team ahead of purchase. Recommended alternatives for this product can be found below, along with publications, customer reviews and Q&As</p>

性能	
形式	Liquid
存放说明	Shipped at 4°C. Upon delivery aliquot and store at -20°C or -80°C. Avoid repeated freeze / thaw cycles.
存储溶液	pH: 7.4 Preservative: 0.05% Sodium azide Constituents: PBS, 50% Glycerol (glycerin, glycerine)
纯度	Immunogen affinity purified
克隆	多克隆
同种型	IgG

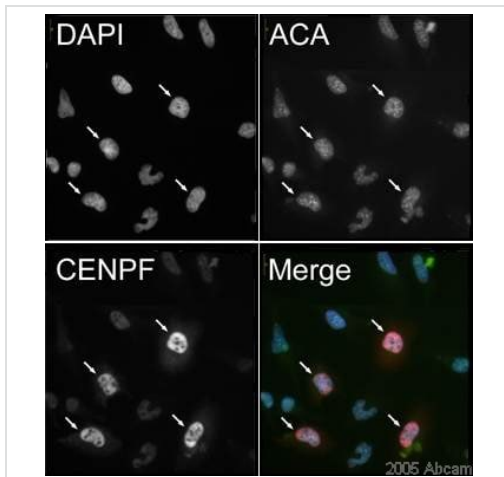
应用	
The Abpromise guarantee	Abpromise™ 承诺保证使用ab5于以下的经测试应用
“应用说明”部分 下显示的仅为推荐的起始稀释度;实际最佳的稀释度/浓度应由使用者检定。	

应用	Ab评论	说明
ICC	★★★★★ (1)	Use at an assay dependent concentration.
Flow Cyt	★★★★★ (1)	Use at an assay dependent concentration. ab171870 - Rabbit polyclonal IgG, is suitable for use as an isotype control with this antibody.
ICC/IF	★★★★★ (5)	1/400 - 1/750.
IP		Use at an assay dependent concentration.
IHC-P		Use at an assay dependent concentration.
WB		1/1500. Detects a band of approximately 330 kDa (predicted molecular weight: 330 kDa). Block membranes for 1 hour with 5% nonfat dry milk/TBS-T.

靶标

功能	Required for kinetochore function and chromosome segregation in mitosis. Required for kinetochore localization of dynein, LIS1, NDE1 and NDEL1. Regulates recycling of the plasma membrane by acting as a link between recycling vesicles and the microtubule network through its association with STX4 and SNAP25. Acts as a potential inhibitor of pocket protein-mediated cellular processes during development by regulating the activity of RB proteins during cell division and proliferation. May play a regulatory or permissive role in the normal embryonic cardiomyocyte cell cycle and in promoting continued mitosis in transformed, abnormally dividing neonatal cardiomyocytes. Interaction with RB directs embryonic stem cells toward a cardiac lineage. Involved in the regulation of DNA synthesis and hence cell cycle progression, via its C-terminus. Has a potential role regulating skeletal myogenesis and in cell differentiation in embryogenesis. Involved in dendritic cell regulation of T-cell immunity against chlamydia.
疾病相关	Stromme syndrome
序列相似性	Belongs to the centromere protein F family.
发展阶段	Gradually accumulates during the cell cycle, reaching peak levels in G2 and M phase, and is rapidly degraded upon completion of mitosis.
翻译后修饰	Hyperphosphorylated during mitosis.
细胞定位	Cytoplasm, perinuclear region. Nucleus matrix. Chromosome, centromere, kinetochore. Cytoplasm, cytoskeleton, spindle. Relocalizes to the kinetochore/centromere (coronal surface of the outer plate) and the spindle during mitosis. Observed in nucleus during interphase but not in the nucleolus. At metaphase becomes localized to areas including kinetochore and mitotic apparatus as well as cytoplasm. By telophase, is concentrated within the intracellular bridge at either side of the mid-body.

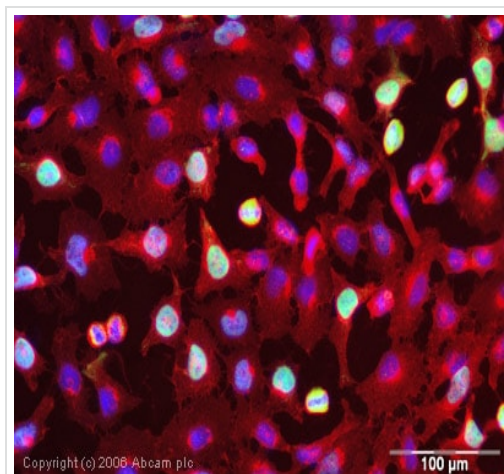
图片



Immunocytochemistry/ Immunofluorescence - Anti-CENPF antibody (ab5)

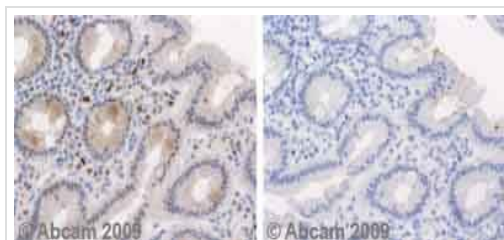
This image is courtesy of Kirk McManus, University of British Columbia

HeLa cells were labelled with anti-ACA and anti-CENPF (ab5). ab5 was used at a working dilution of 1/400. This image demonstrates the dramatic increase in fluorescence that occurs late in G2 cells (indicated by arrows). In the final panel DAPI is pseudo-coloured blue, while ACA and CENPF are coloured green and red respectively. 40x magnification.



Immunocytochemistry/ Immunofluorescence - Anti-CENPF antibody (ab5)

ICC/IF image of ab5 stained human HeLa cells. The cells were methanol fixed (5 min) and incubated with the antibody (ab5, 1 µg/ml) for 1h at room temperature. The secondary antibody (green) was Alexa Fluor® 488 goat anti-rabbit IgG (H+L) used at a 1/1000 dilution for 1h. Image-iT™ FX Signal Enhancer was used as the primary blocking agent, 5% BSA (in TBS-T) was used for all other blocking steps. DAPI was used to stain the cell nuclei (blue). Alexa Fluor® 594 WGA was used to label plasma membranes (red).



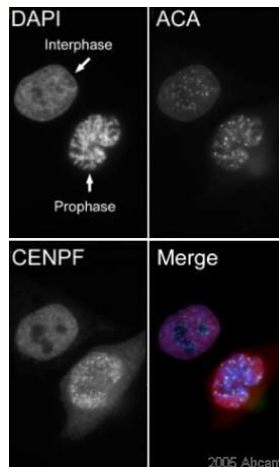
Immunohistochemistry (Formalin/PFA-fixed paraffin-embedded sections) - Anti-CENPF antibody (ab5)

Ab5 staining Human normal colon tissue. Staining is localised to nuclear compartment.

Left panel: with primary antibody at 4 µg/ml. Right panel: isotype control.

Sections were stained using an automated system DAKO Autostainer Plus, at room temperature: sections were rehydrated and antigen retrieved with the Dako 3 in 1 AR buffer EDTA pH 9.0 in a DAKO PT Link. Slides were peroxidase blocked in 3% H₂O₂ in methanol for 10 mins. They were then blocked with Dako Protein block for 10 minutes (containing casein 0.25% in PBS) then incubated with primary antibody for 20 min and detected with Dako envision flex amplification kit for 30 minutes. Colorimetric detection

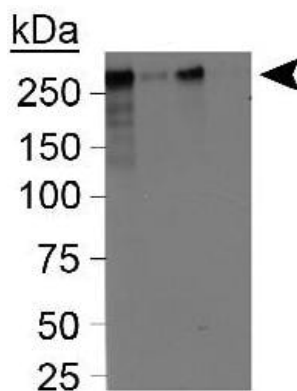
was completed with Diaminobenzidine for 5 minutes. Slides were counterstained with Haematoxylin and coverslipped under DePeX. Please note that for manual staining we recommend to optimize the primary antibody concentration and incubation time (overnight incubation), and amplification may be required.



Immunocytochemistry/ Immunofluorescence - Anti-CENPF antibody (ab5)

This image is courtesy of Kirk McManus, University of British Columbia

Interphase and Prophase HeLa cells were labelled with anti-ACA and anti-CENPF (ab5). ab5 was used at a working dilution of 1/400. This image emphasizes the redistribution of CENPF from the nuclear matrix during late G2 following entry into the initial stages of mitosis (see the accompanying image). Distinct punctate CENPF patterns proximally located in relation to the centromeres can be seen. In the final panel DAPI is pseudo-coloured blue, while ACA and CENPF are green and red respectively. 100x magnification.



Western blot - Anti-CENPF antibody (ab5)

All lanes : Anti-CENPF antibody (ab5) at 1/1500 dilution

Lane 1 : Mitotic HeLa Lysate

Lane 2 : Asynchronous HeLa Lysate

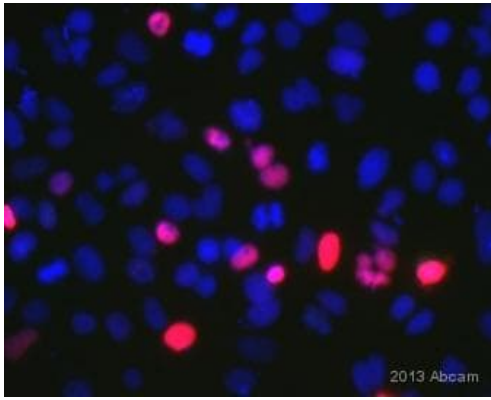
Lane 3 : 50gamma Mitotic HeLa Lysate

Lane 4 : 50gamma Asynchronous HeLa Lysate

Lysates/proteins at 25 µg per lane.

Predicted band size: 330 kDa

Observed band size: 310 kDa



Paraformaldehyde-fixed, 0.2% Triton X-100 permeabilized A549 (human lung carcinoma cell line) cells stained for CENPF (red) using ab5 at 1/500 dilution in ICC/IF.). Goat Anti-Rabbit IgG H&L (Alexa Fluor® 555) at 1/500 dilution was used as the secondary antibody.

Immunocytochemistry/ Immunofluorescence - Anti-CENPF antibody (ab5)

This image is courtesy of an Abreview submitted by Dr. Stuart Rulten.

Please note: All products are "FOR RESEARCH USE ONLY. NOT FOR USE IN DIAGNOSTIC PROCEDURES"

Our Abpromise to you: Quality guaranteed and expert technical support

- Replacement or refund for products not performing as stated on the datasheet
- Valid for 12 months from date of delivery
- Response to your inquiry within 24 hours
- We provide support in Chinese, English, French, German, Japanese and Spanish
- Extensive multi-media technical resources to help you
- We investigate all quality concerns to ensure our products perform to the highest standards

If the product does not perform as described on this datasheet, we will offer a refund or replacement. For full details of the Abpromise, please visit <https://www.abcam.cn/abpromise> or contact our technical team.

Terms and conditions

- Guarantee only valid for products bought direct from Abcam or one of our authorized distributors