

Anti-Cellular Apoptosis Susceptibility/CSE1L antibody [EPR10327(B)] ab151546

重组 RabMAb

2 References [10 图像](#)

概述

产品名称	Anti-Cellular Apoptosis Susceptibility/CSE1L抗体[EPR10327(B)]
描述	兔单克隆抗体[EPR10327(B)] to Cellular Apoptosis Susceptibility/CSE1L
宿主	Rabbit
经测试应用	适用于: WB, IHC-P, ICC/IF 不适用于: IP
种属反应性	与反应: Human 预测可用于: Mouse 
免疫原	Synthetic peptide within Human Cellular Apoptosis Susceptibility/CSE1L aa 900 to the C-terminus. The exact sequence is proprietary. Database link: P55060
阳性对照	SW480, MOLT4, HeLa, 293T, Ramos and MCF7 cell lysates; Human thyroid carcinoma tissue; SW480 cells.
常规说明	<p>This product is a recombinant monoclonal antibody, which offers several advantages including:</p> <ul style="list-style-type: none"> - High batch-to-batch consistency and reproducibility - Improved sensitivity and specificity - Long-term security of supply - Animal-free production <p>For more information see here.</p> <p>Our RabMAb[®] technology is a patented hybridoma-based technology for making rabbit monoclonal antibodies. For details on our patents, please refer to RabMAb[®] patents.</p> <p>Rat: We have preliminary internal testing data to indicate this antibody may not react with this species. Please contact us for more information.</p>

性能

形式	Liquid
存放说明	Shipped at 4°C. Store at -20°C.
存储溶液	pH: 7.2

纯度

克隆

克隆编号

同种型

IgG

应用

Abpromise™ 承诺保证使用ab151546于以下的经测试应用

“应用说明”部分 下显示的仅为推荐的起始稀释度;实际最佳的稀释度/浓度应由使用者检定。

应用	Ab评论	说明
WB		1/1000 - 1/10000. Predicted molecular weight: 110 kDa.
IHC-P		1/50 - 1/100. Perform heat mediated antigen retrieval with citrate buffer pH 6 before commencing with IHC staining protocol.
ICC/IF		1/250 - 1/500.

应用说明

Is unsuitable for IP.

靶标

功能

Export receptor for importin- α . Mediates importin- α re-export from the nucleus to the cytoplasm after import substrates (cargos) have been released into the nucleoplasm. In the nucleus binds cooperatively to importin- α and to the GTPase Ran in its active GTP-bound form. Docking of this trimeric complex to the nuclear pore complex (NPC) is mediated through binding to nucleoporins. Upon transit of a nuclear export complex into the cytoplasm, disassembling of the complex and hydrolysis of Ran-GTP to Ran-GDP (induced by RANBP1 and RANGAP1, respectively) cause release of the importin- α from the export receptor. CSE1L/XPO2 then return to the nuclear compartment and mediate another round of transport. The directionality of nuclear export is thought to be conferred by an asymmetric distribution of the GTP- and GDP-bound forms of Ran between the cytoplasm and nucleus.

组织特异性

Highly expressed in proliferating cells.

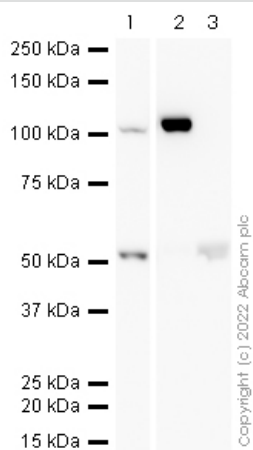
序列相似性

Belongs to the XPO2/CSE1 family.
Contains 1 importin N-terminal domain.

细胞定位

Cytoplasm. Nucleus. Shuttles between the nucleus and the cytoplasm.

图片



Western blot - Anti-Cellular Apoptosis
Susceptibility/CSE1L antibody [EPR10327(B)]
(ab151546)

All lanes : Anti-Cellular Apoptosis Susceptibility/CSE1L antibody [EPR10327(B)] (ab151546) at 1/1000 dilution

Lane 1 : HeLa cell lysate at 20 µg

Lane 2 : HeLa Pulldown with [ab70547](#) cell lysate at 10 µl

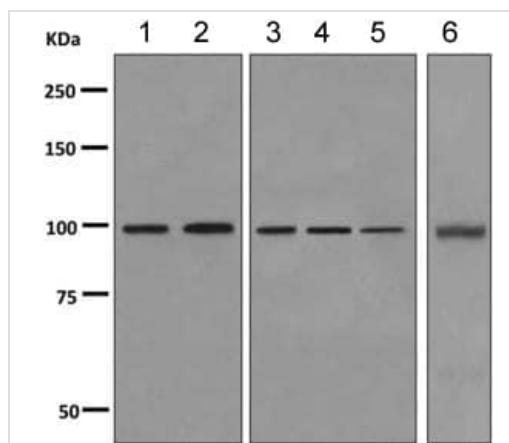
Lane 3 : HeLa Pulldown with [ab172730](#) cell lysate at 10 µl

Performed under reducing conditions.

Predicted band size: 110 kDa

Observed band size: 100 kDa

False colour image of Western blot: Anti-Cellular Apoptosis Susceptibility/CSE1L antibody [EPR10327(B)] staining at 1/1000 dilution, shown in black. In Western blot, ab151546 was shown to bind specifically to Cellular Apoptosis Susceptibility/CSE1L. First, samples were run on an SDS-PAGE gel then transferred onto a nitrocellulose membrane. Membranes were blocked in 3 % milk in TBS-0.1 % Tween[®] 20 (TBS-T) before incubation with primary antibodies overnight at 4 °C. Blots were washed four times in TBS-T, incubated with secondary antibodies for 1 h at room temperature, washed again four times before development with Optiblot (ECL reagent [ab133456](#)) and imaged with 2 minutes exposure time. Secondary antibodies used were VeriBlot for IP Detection Reagent (HRP) ([ab131366](#)) at 1/10000 dilution.



Western blot - Anti-Cellular Apoptosis
Susceptibility/CSE1L antibody [EPR10327(B)]
(ab151546)

All lanes : Anti-Cellular Apoptosis Susceptibility/CSE1L antibody
[EPR10327(B)] (ab151546) at 1/1000 dilution

Lane 1 : SW480 cell lysate

Lane 2 : MOLT4 cell lysate

Lane 3 : HeLa cell lysate

Lane 4 : 293T cell lysate

Lane 5 : Ramos cell lysate

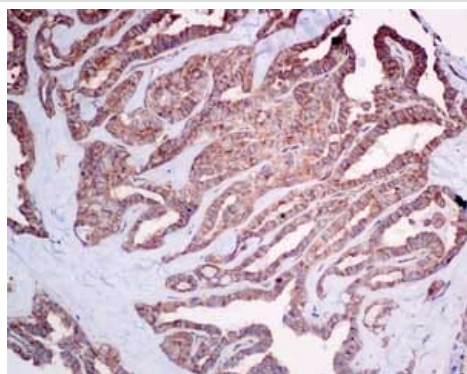
Lane 6 : MCF7 cell lysate

Lysates/proteins at 10 µg per lane.

Secondary

All lanes : Goat anti-rabbit HRP at 1/2000 dilution

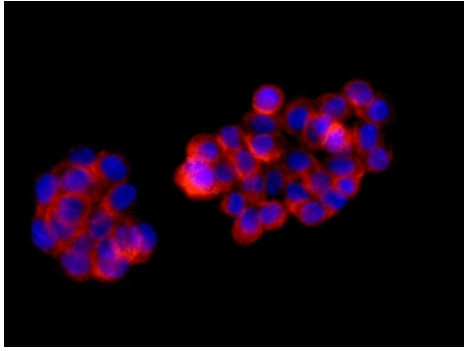
Predicted band size: 110 kDa



Immunohistochemistry (Formalin/PFA-fixed paraffin-
embedded sections) - Anti-Cellular Apoptosis
Susceptibility/CSE1L antibody [EPR10327(B)]
(ab151546)

Immunohistochemical analysis of paraffin-embedded Human thyroid
carcinoma tissue labeling Cellular Apoptosis Susceptibility/CSE1L
with ab151546 at 1/50 dilution.

Perform heat mediated antigen retrieval with citrate buffer pH 6
before commencing with IHC staining protocol.



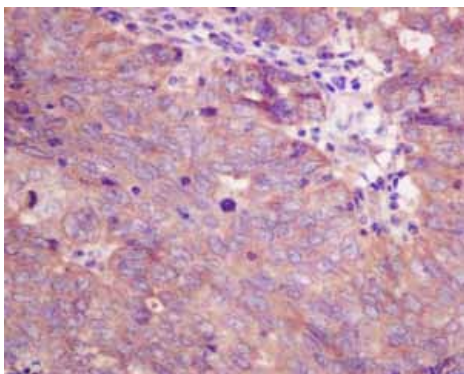
Immunocytochemistry/ Immunofluorescence - Anti-Cellular Apoptosis Susceptibility/CSE1L antibody [EPR10327(B)] (ab151546)

Immunofluorescent analysis of SW480 cells labeling Cellular Apoptosis Susceptibility/CSE1L with ab151546 at 1/250 dilution.

Immunohistochemistry (Formalin/PFA-fixed paraffin-embedded sections) - Anti-Cellular Apoptosis Susceptibility/CSE1L antibody [EPR10327(B)] (ab151546)

Immunohistochemical analysis of paraffin embedded Human Ovarian carcinoma tissue using ab151546 showing +ve staining.

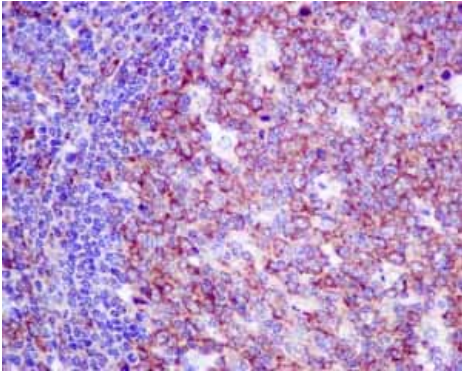
Perform heat mediated antigen retrieval with citrate buffer pH 6 before commencing with IHC staining protocol.



Immunohistochemistry (Formalin/PFA-fixed paraffin-embedded sections) - Anti-Cellular Apoptosis Susceptibility/CSE1L antibody [EPR10327(B)] (ab151546)

Immunohistochemical analysis of paraffin embedded Human Endometrial carcinoma tissue using ab151546 showing +ve staining.

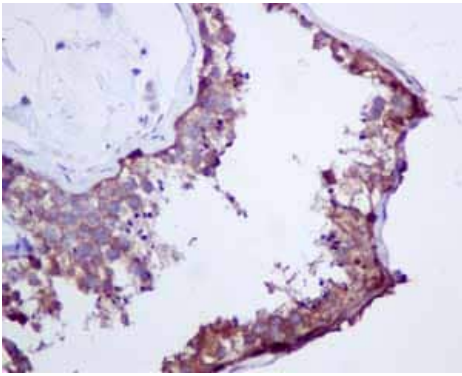
Perform heat mediated antigen retrieval with citrate buffer pH 6 before commencing with IHC staining protocol.



Immunohistochemistry (Formalin/PFA-fixed paraffin-embedded sections) - Anti-Cellular Apoptosis Susceptibility/CSE1L antibody [EPR10327(B)] (ab151546)

Immunohistochemical analysis of paraffin embedded normal Human tonsil tissue using ab151546 showing +ve staining.

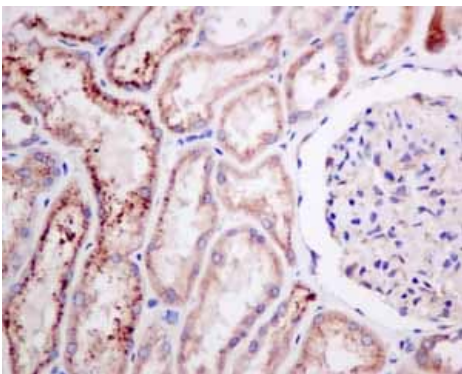
Perform heat mediated antigen retrieval with citrate buffer pH 6 before commencing with IHC staining protocol.



Immunohistochemistry (Formalin/PFA-fixed paraffin-embedded sections) - Anti-Cellular Apoptosis Susceptibility/CSE1L antibody [EPR10327(B)] (ab151546)

Immunohistochemical analysis of paraffin embedded normal Human testis tissue using ab151546 showing +ve staining.

Perform heat mediated antigen retrieval with citrate buffer pH 6 before commencing with IHC staining protocol.



Immunohistochemistry (Formalin/PFA-fixed paraffin-embedded sections) - Anti-Cellular Apoptosis Susceptibility/CSE1L antibody [EPR10327(B)] (ab151546)

Immunohistochemical analysis of paraffin embedded normal Human kidney tissue using ab151546 showing +ve staining.

Perform heat mediated antigen retrieval with citrate buffer pH 6 before commencing with IHC staining protocol.

Why choose a recombinant antibody?



Research with confidence
Consistent and reproducible results



Long-term and scalable supply
Recombinant technology



Success from the first experiment
Confirmed specificity



Ethical standards compliant
Animal-free production

Anti-Cellular Apoptosis Susceptibility/CSE1L
antibody [EPR10327(B)] (ab151546)

Please note: All products are "FOR RESEARCH USE ONLY. NOT FOR USE IN DIAGNOSTIC PROCEDURES"

Our Abpromise to you: Quality guaranteed and expert technical support

- Replacement or refund for products not performing as stated on the datasheet
- Valid for 12 months from date of delivery
- Response to your inquiry within 24 hours
- We provide support in Chinese, English, French, German, Japanese and Spanish
- Extensive multi-media technical resources to help you
- We investigate all quality concerns to ensure our products perform to the highest standards

If the product does not perform as described on this datasheet, we will offer a refund or replacement. For full details of the Abpromise, please visit <https://www.abcam.cn/abpromise> or contact our technical team.

Terms and conditions

- Guarantee only valid for products bought direct from Abcam or one of our authorized distributors