

# Anti-Cellular Apoptosis Susceptibility/CSE1L antibody ab70547

## 5 图像

### 概述

产品名称	Anti-Cellular Apoptosis Susceptibility/CSE1L 抗体
描述	兔多克隆抗体 to Cellular Apoptosis Susceptibility/CSE1L
宿主	Rabbit
经测试应用	适用于: IHC-P, WB, IP
种属反应性	与反应: Mouse, Human 预测可用于: Rat, Rabbit, Horse, Chicken, Guinea pig, Cow, Turkey, Pig, Chimpanzee, Rhesus monkey, Gorilla, Orangutan, Platypus 
免疫原	Synthetic peptide corresponding to Human Cellular Apoptosis Susceptibility/CSE1L (N terminal). Database link: <a href="#">NP_001307.2</a>
阳性对照	WB: HeLa and Ramos whole cell lysate. IP: HEK-293T whole cell lysate. IHC-P: Human testicular seminoma; mouse plasmacytoma.
常规说明	<p>The Life Science industry has been in the grips of a reproducibility crisis for a number of years. Abcam is leading the way in addressing this with our range of recombinant monoclonal antibodies and knockout edited cell lines for gold-standard validation. Please check that this product meets your needs before purchasing.</p> <p>If you have any questions, special requirements or concerns, please send us an inquiry and/or contact our Support team ahead of purchase. Recommended alternatives for this product can be found below, along with publications, customer reviews and Q&amp;As</p>

### 性能

形式	Liquid
存放说明	Shipped at 4°C. Upon delivery aliquot and store at -20°C. Avoid freeze / thaw cycles.
存储溶液	pH: 7 Preservative: 0.09% Sodium azide Constituents: 1.815% Tris, 1.764% Sodium citrate, 0.021% PBS
纯度	Immunogen affinity purified
克隆	多克隆
同种型	IgG

应用

The Abpromise guarantee      **Abpromise™**承诺保证使用ab70547于以下的经测试应用

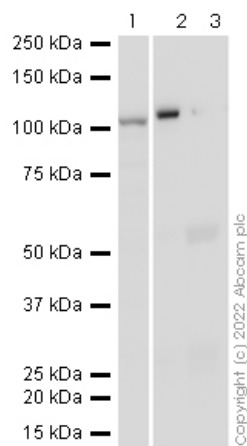
“应用说明”部分 下显示的仅为推荐的起始稀释度;实际最佳的稀释度/浓度应由使用者检定。

应用	Ab评论	说明
IHC-P		1/1000 - 1/5000. Perform heat mediated antigen retrieval with citrate buffer pH 6 before commencing with IHC staining protocol.
WB		1/10000 - 1/25000. Detects a band of approximately 110 kDa (predicted molecular weight: 110 kDa).
IP		Use at 2-5 µg/mg of lysate.

靶标

功能	Export receptor for importin-alpha. Mediates importin-alpha re-export from the nucleus to the cytoplasm after import substrates (cargos) have been released into the nucleoplasm. In the nucleus binds cooperatively to importin-alpha and to the GTPase Ran in its active GTP-bound form. Docking of this trimeric complex to the nuclear pore complex (NPC) is mediated through binding to nucleoporins. Upon transit of a nuclear export complex into the cytoplasm, disassembling of the complex and hydrolysis of Ran-GTP to Ran-GDP (induced by RANBP1 and RANGAP1, respectively) cause release of the importin-alpha from the export receptor. CSE1L/XPO2 then return to the nuclear compartment and mediate another round of transport. The directionality of nuclear export is thought to be conferred by an asymmetric distribution of the GTP- and GDP-bound forms of Ran between the cytoplasm and nucleus.
组织特异性	Highly expressed in proliferating cells.
序列相似性	Belongs to the XPO2/CSE1 family. Contains 1 importin N-terminal domain.
细胞定位	Cytoplasm. Nucleus. Shuttles between the nucleus and the cytoplasm.

图片



Western blot - Anti-Cellular Apoptosis  
Susceptibility/CSE1L antibody (ab70547)

**All lanes :** Anti-Cellular Apoptosis Susceptibility/CSE1L antibody (ab70547) at 1/1000 dilution

**Lane 1 :** HeLa cell lysate at 20 µg

**Lane 2 :** HeLa Pulldown with ab70547 cell lysate at 10 µl

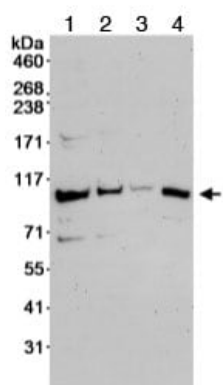
**Lane 3 :** HeLa Pulldown with **ab172730** cell lysate at 10 µl

Performed under reducing conditions.

**Predicted band size:** 110 kDa

**Observed band size:** 100 kDa

False colour image of Western blot: Anti-Cellular Apoptosis Susceptibility/CSE1L antibody staining at 1/1000 dilution, shown in black; Mouse anti-GAPDH antibody [6C5] (**ab8245**) loading control staining at 1/20000 dilution, shown in red. In Western blot, ab70547 was shown to bind specifically to Cellular Apoptosis Susceptibility/CSE1L. First, samples were run on an SDS-PAGE gel then transferred onto a nitrocellulose membrane. Membranes were blocked in 3 % milk in TBS-0.1 % Tween® 20 (TBS-T) before incubation with primary antibodies overnight at 4 °C. Blots were washed four times in TBS-T, incubated with secondary antibodies for 1 h at room temperature, washed again four times before development with Optiblot (ECL reagent **ab133456**) and imaged with 30 seconds exposure time. Secondary antibodies used were VeriBlot for IP Detection Reagent (HRP) (**ab131366**) at 1/1000 dilution.



Western blot - Anti-Cellular Apoptosis  
Susceptibility/CSE1L antibody (ab70547)

**All lanes :** Anti-Cellular Apoptosis Susceptibility/CSE1L antibody (ab70547) at 0.04 µg/ml

**Lane 1 :** Whole cell lysate from HeLa cells at 50 µg

**Lane 2 :** Whole cell lysate from HeLa cells at 15 µg

**Lane 3 :** Whole cell lysate from HeLa cells at 5 µg

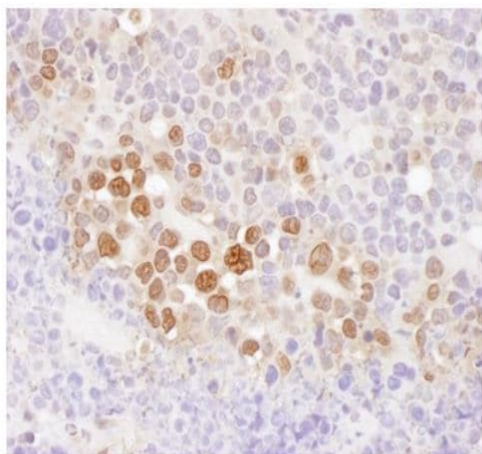
**Lane 4 :** Whole cell lysate from Ramos cells at 50 µg

Developed using the ECL technique.

**Predicted band size:** 110 kDa

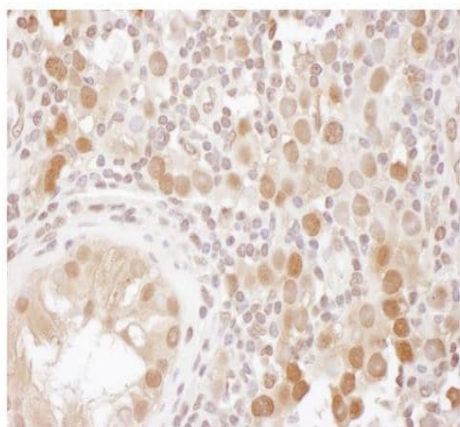
**Observed band size:** 110 kDa

**Exposure time:** 3 minutes



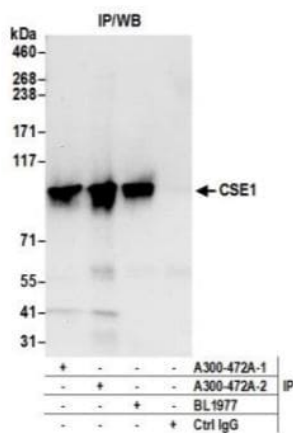
Immunohistochemistry (Formalin/PFA-fixed paraffin-embedded sections) - Anti-Cellular Apoptosis Susceptibility/CSE1L antibody (ab70547)

Paraffin embedded mouse plasmacytoma tissue stained for CSE1L using ab70547 at 0.2 µg/ml in immunohistochemical analysis.



Immunohistochemistry (Formalin/PFA-fixed paraffin-embedded sections) - Anti-Cellular Apoptosis Susceptibility/CSE1L antibody (ab70547)

Paraffin embedded human testicular seminoma tissue stained for CSE1L using ab70547 at 0.2 µg/ml in immunohistochemical analysis.



Immunoprecipitation - Anti-Cellular Apoptosis  
Susceptibility/CSE1L antibody (ab70547)

Whole cell lysate (0.5 or 1.0 mg per IP reaction; 20% of IP loaded) from HEK-293T cells prepared using NETN lysis buffer.

Affinity purified rabbit anti-CSE1 antibody used for IP at 6 µg per reaction. CSE1 was also immunoprecipitated by a previous lot of this antibody and rabbit anti-CSE1 antibody BL1977.

For blotting immunoprecipitated CSE1, ab70547 was used at 1 µg/ml. Chemiluminescence had an exposure time of 10 seconds.

**Please note:** All products are "FOR RESEARCH USE ONLY. NOT FOR USE IN DIAGNOSTIC PROCEDURES"

### Our Abpromise to you: Quality guaranteed and expert technical support

- Replacement or refund for products not performing as stated on the datasheet
- Valid for 12 months from date of delivery
- Response to your inquiry within 24 hours
- We provide support in Chinese, English, French, German, Japanese and Spanish
- Extensive multi-media technical resources to help you
- We investigate all quality concerns to ensure our products perform to the highest standards

If the product does not perform as described on this datasheet, we will offer a refund or replacement. For full details of the Abpromise, please visit <https://www.abcam.cn/abpromise> or contact our technical team.

### Terms and conditions

- Guarantee only valid for products bought direct from Abcam or one of our authorized distributors